

**Mallory Sonalert Products, Inc.**

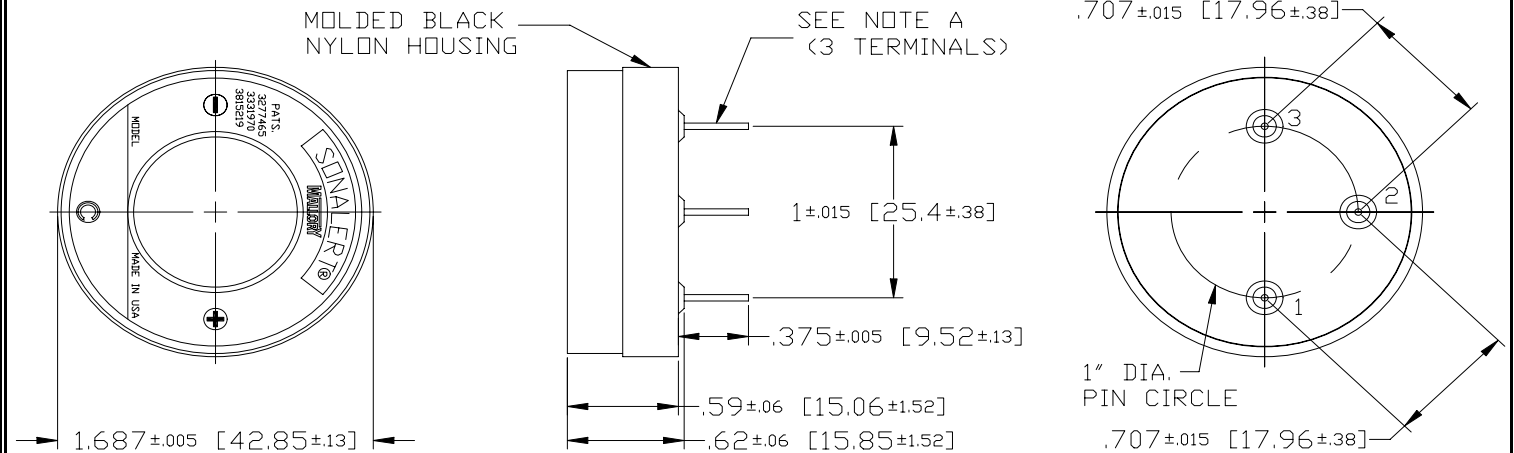
Part #:

SBM2R**Sales Outline Drawing**

Revision:

C**Specifications:**

Sound Level Category	Medium
Mode of Operation	Continuous
Voltage Rating	1 to 5 VDC
Frequency	2900 \pm 500 Hz
Loudness @ 2 FT	59 to 74 dB(A) Typ.
Current Draw	3-16 mA
Housing Material	6/6 Nylon, Color: Black
Storage Temperature	-40° to +85° C
Operating Temperature	-30° to +65° C
Weight (Typical)	0.6 oz (17g)
Options	Please contact factory.

Dimensions: Inches (mm)**cUL Recognized****ROHS Compliant****NOTE A:**

TERMINALS - .031" DIA. SOLDER COATED COPPER-CLAD STEEL. TERMINAL 1 IS POSITIVE, TERMINAL 3 IS NEGATIVE. TERMINAL 2 IS FOR SUPPORT ONLY - NO ELECTRICAL CONNECTION.

NOTE B:

MOUNTING - INSERT INTO PRINTED CIRCUIT BOARD AND HAND OR MACHINE SOLDER.