

SAFETY ORGANIZATION(S):

THIS FILTER HAS BEEN FORMALLY RECOGNIZED, CERTIFIED OR APPROVED BY THE LISTED AGENCY. THEREFORE, ALL TEST/REQUIREMENTS SPECIFIED IN THE LATEST REVISION OF THE FOLLOWING AGENCY STANDARDS HAVE BEEN MET.

UL RECOGNIZED  
 CSA CERTIFIED  
 VDE APPROVED  
 SEV APPROVED

UL 1283  
 CSA 22.2, NO.0,0.4,B  
 VDE 565-3  
 SEV 1055/TP1977/5.1.1

OPERATING SPECIFICATIONS:

LINE VOLTAGE/CURRENT, 3 AMP., 120/250 VAC  
 3 AMP./40°C, 250 VAC  
 50-60Hz  
 40°C  
 LINE FREQUENCY, .25mA at 120V 60 Hz  
 MAX. CASE RISE & RATED CURRENT, .40 mA at 250V 50 Hz  
 MAX. LEAKAGE CURRENT, EACH LINE TO GROUND  
 OPERATING AMBIENT TEMP. RANGE, -10°C TO +40°C @ RATED CURRENT, I<sub>r</sub>

IN AN AMBIENT, T<sub>a</sub>, HIGHER THAN 40°C, THE MAXIMUM OPERATING CURRENT, I<sub>o</sub>, IS AS FOLLOWS:

$$I_o = I_r \sqrt{\frac{85 - T_a}{45}}$$

RELIABILITY SPECIFICATIONS:

STORAGE TEMPERATURE, -40°C TO +85°C  
 HUMIDITY, 21 DAYS @ 40°C 95% RH  
 CURRENT OVERLOAD TEST, 6 TIMES RATED CURRENT FOR 8 SECONDS

TEST SPECIFICATIONS:

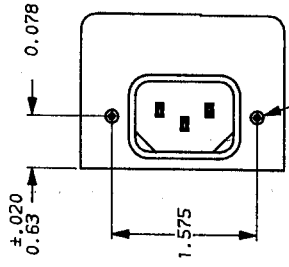
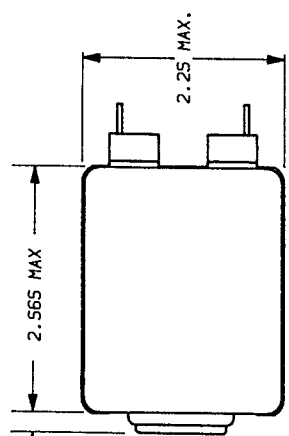
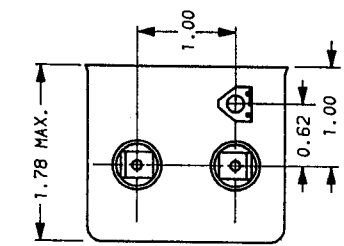
INDUCTANCE, 14.12 mH NOMINAL  
 CAPACITANCE, (MEASURED @ 1 KHz, 0.25 VAC MAX., 25°C ±1°C)  
 LINE TO GROUND, .0056µF ±20%  
 LINE TO LINE, .811µF ±20%  
 DISCHARGE RESISTOR, 330 KΩ  
 LINE/GROUND AND LINE/LINE INSULATION RESISTANCE 6000 MΩ (MIN) AT 100 VDC  
 (W/O DISCHARGE RESISTOR) 20°C AND 50% RH

RECOMMENDED RECEIVING INSPECTION HIPOT:

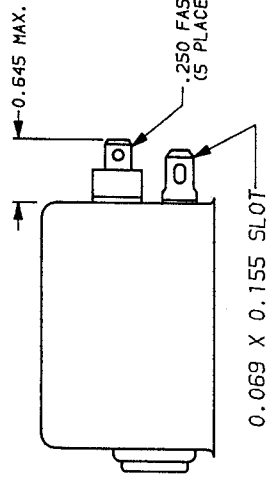
LINE TO GROUND, 2250 VDC FOR 1 MINUTE  
 LINE TO LINE, 1450 VDC FOR 1 MINUTE

FILTER APPROVAL:

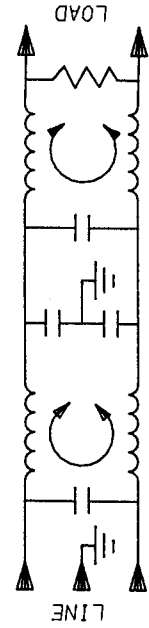
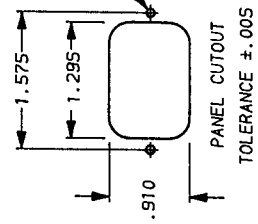
THE BEST WAY TO SELECT AND QUALIFY A FILTER IS FOR YOUR ENGINEERING TO TEST THE UNIT IN YOUR EQUIPMENT.



6-32 X 1/4 OR M3 X .5 BLIND INSERT



0.069 X 0.155 SLOT



FREQUENCY MHE	50Ω - 50Ω (MINIMUM) INSERTION LOSS											
COMMON	.01	.02	.04	.06	.15	.5	1	2	5	10	20	30
DIFF. dB	12	2	2	19	58	65	65	65	65	60	38	25
	1	2	3	4	36	55	55	54	54	53	51	50

This document is proprietary to CORCOM INC. and is not to be reproduced nor used for manufacturing purposes except on CORCOM's order or prior written consent.

TOLERANCE EXCEPT AS NOTED  
 DECIMAL, .XXX .XX .X ANGLES ± 1°  
 ENGLISH, ±.025  
 METRIC, ±  
 MATERIAL:  
 AS SUPPLIED

FINISH:  
 AS SUPPLIED

**CORCOM**  
 LIBERTYVILLE, IL 60048

**POWER LINE FILTER**

SCALE	DATE	DRG. NO.	REV.
NTS	9-12-89	3EP7 & 3EP7M	9
DRW. BY	ORIGINATOR		
TDL	CW		