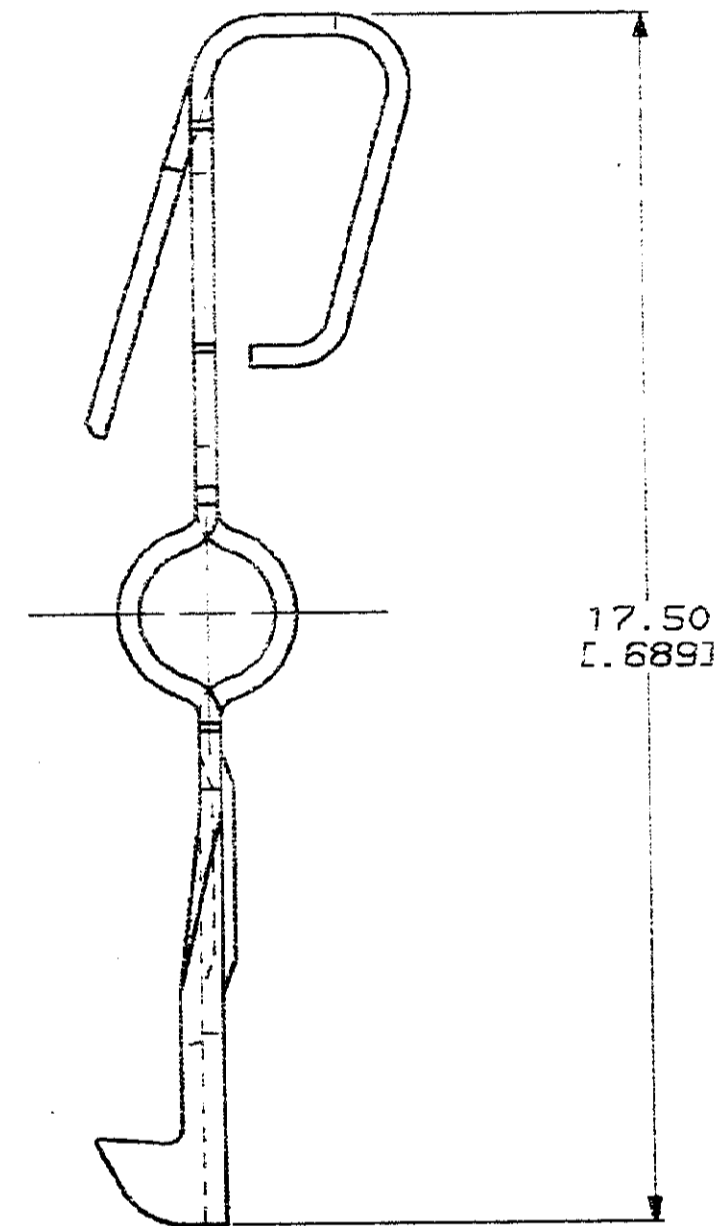
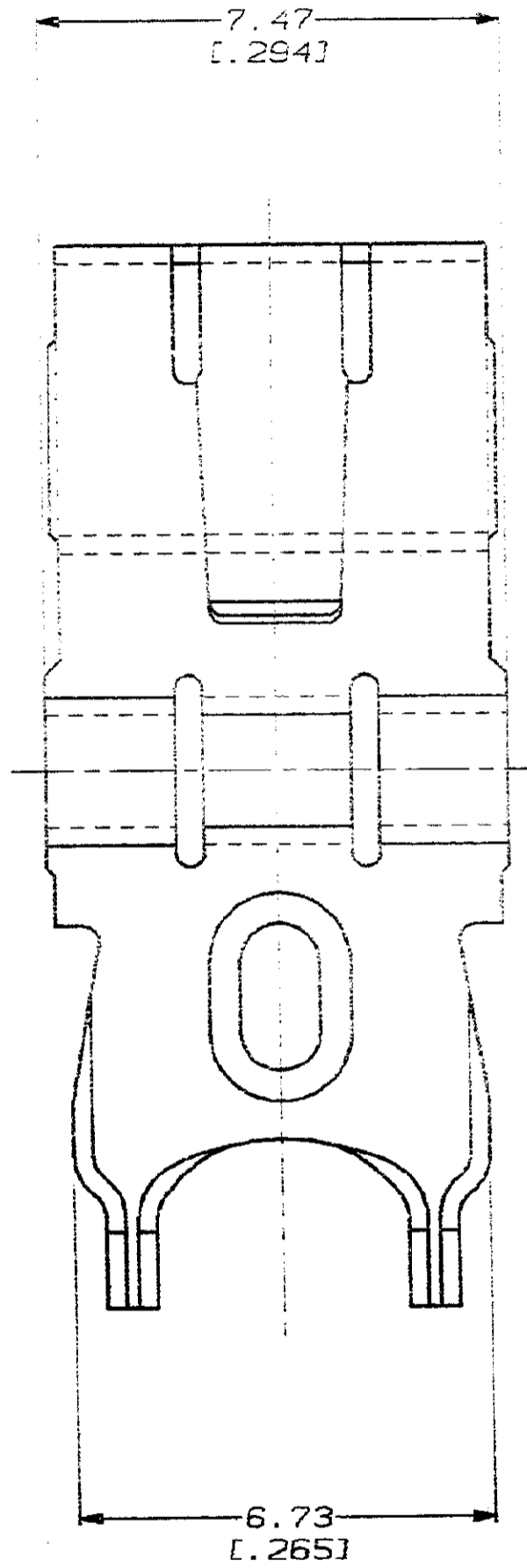


DRAWING MADE IN THIRD ANGLE PROJECTION

THIS DRAWING IS UNPUBLISHED. RELEASED FOR PUBLICATION .19
 © COPYRIGHT 19 BY AMP INCORPORATED. ALL INTERNATIONAL RIGHTS RESERVED.

| NO | | LOC | | DIST | | ZONE | | LTR | | REVISIONS | |
|----|-----|------|------|------|-------------|----------|------|-----|--|-----------|--|
| NO | LOC | DIST | ZONE | LTR | DESCRIPTION | DATE | APPD | | | | |
| 8 | BD | 39 | | | 0 RELEASED | 12/04/90 | | | | | |



749122-1

PART NO

DO NOT SCALE PRINT.
 UNLESS SPECIFIED
 DIMENSIONS IN mm [INCHES]
 TOLERANCES ON:
 2 PLC DEC ± 0.51 [.020]
 3 PLC DEC ± -
 ANGLES ± -

DR 12/04/90
 B. MOYER

CHK C.-Baker 12-5-90

APPD Bob Baker 12-5-90

APPD J. Quinn 12-5-90

PRODUCT SPEC

MATERIAL
 STAINLESS STEEL

FINISH

APPLICATION SPEC

WEIGHT

AMP AMP Incorporated
 Harrisburg, PA 17105-3608

NAME
 LATCH SPRING, LP, AMPLIMITE
 .050 SERIES

| | | |
|-------|-----------|------------|
| SIZE | CAGE CODE | DRAWING NO |
| Ⓒ | 00779 | 749122 |
| SCALE | SHEET | |
| 10:1 | 1 OF 1 | |

CUSTOMER DRAWING