

REFERENCE SPECIFICATIONS

-NFC 93425 (in compliance with HE 507)

PHYSICAL CHARACTERISTICS

-INSULATOR MATERIAL: THERMOPLASTIC UL94V0

-CONTACT MATERIAL: PHOSPHOR BRONZE(SIGNAL CONTACT)
GOLD OVER NICKEL

-ACCESSORIES: STAINLESS STEEL or BRASS
Cadmium plated, yellow passivation

-SHELLS: STEEL
Cadmium plated, yellow passivation

ELECTRICAL CHARACTERISTICS

-NOMINAL CURRENT: 7.5A (SIGNAL CONTACT)

-CONTACT RESISTANCE: <=7.3 m Ohms SIGNAL

-CONTACT/CONTACT : >=1000 V

-CONTACT/GROUND : >=1200 V

-INSULATION RESISTANCE: >=5000 MOhms

- CLIMATIC CATEGORY: 55/125/21

TEMPERATURE RANGE -55°C TO +125°C

DAMP HEAT STEADY STATE 56 DAYS

SALT SPRAY 48 HOURS

Series

DBML13W3S300N

Shell size: **E A B C D**
see sheet 3

M :characteristic
for the DM series

Front accessory definition
see sheet 2

Blank :without accessory

L :threaded insert M3

O :threaded insert UNC 4-40

V :female screw UNC 4-40

F :floating mounting

S :spacer

Layout of contacts (see sheet 3)

Contacts

S :Socket

Termination type

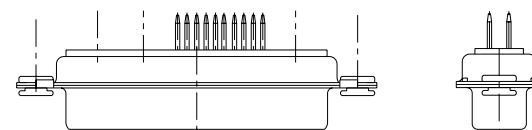
3 Straight version

Plating

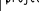


00 straight solder 500 matings/unmatings

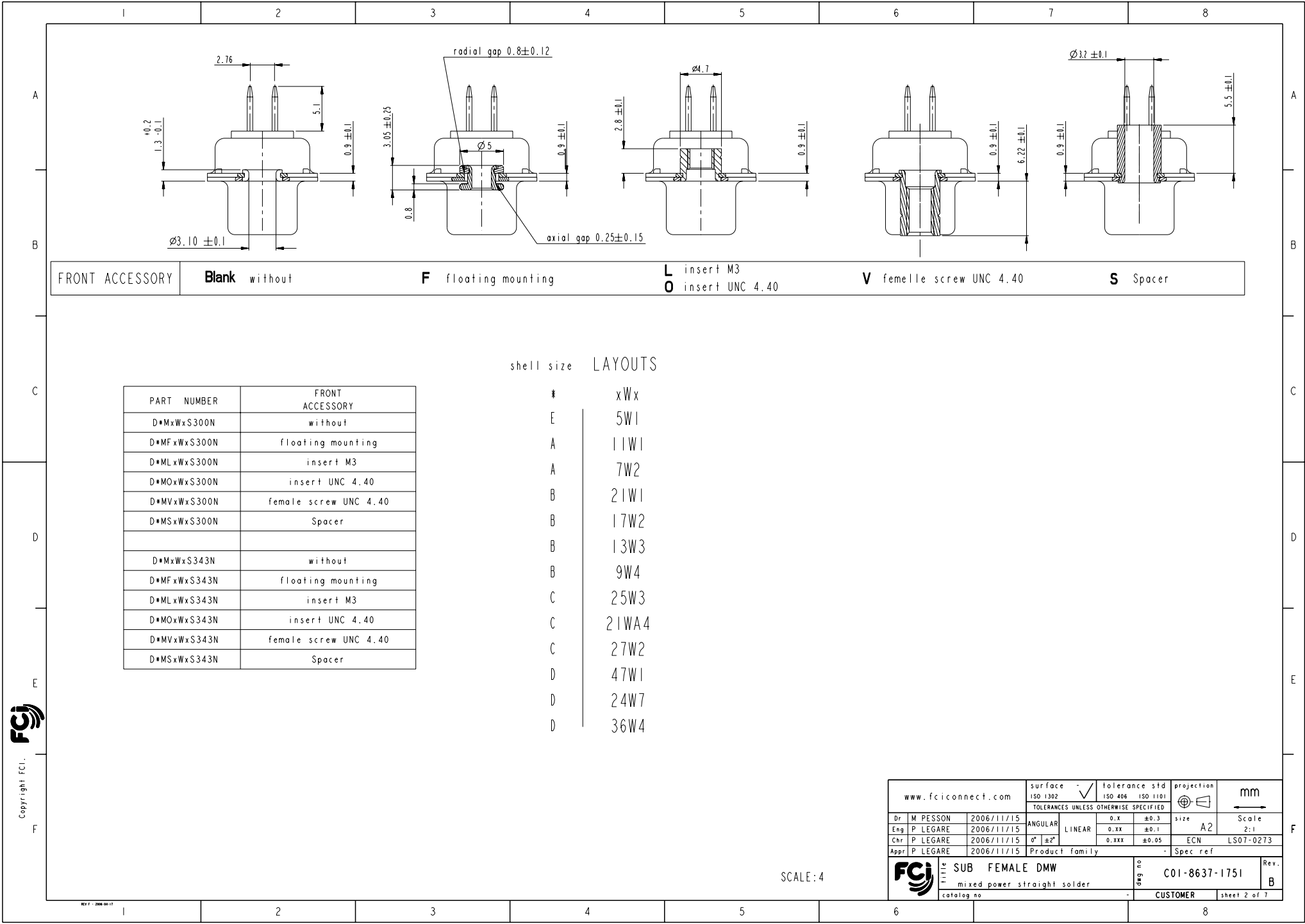
43 straight solder 500 matings/unmatings for harsh environment

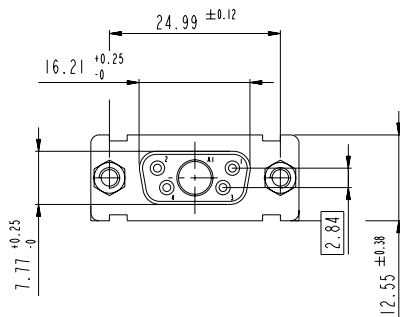
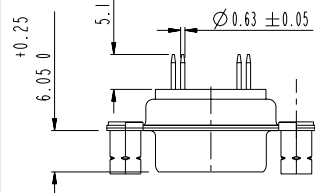
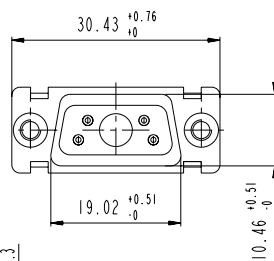
N :obligatory indication for HE 507 series



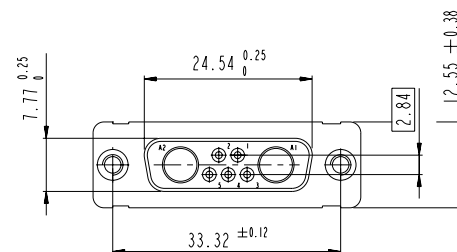
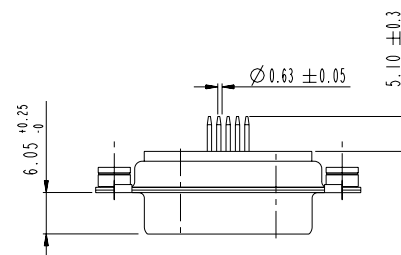
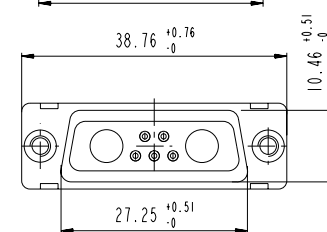
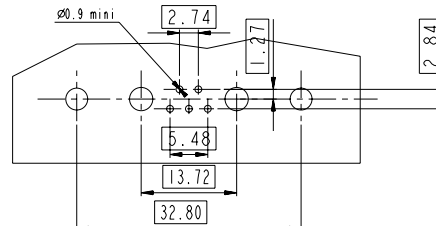
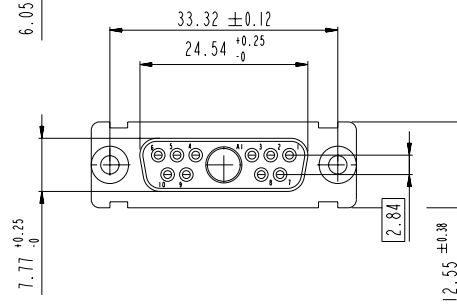
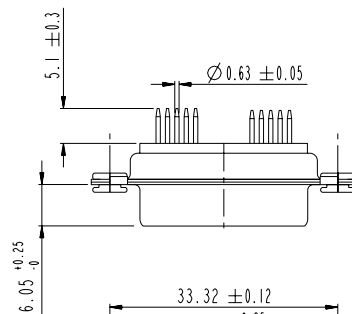
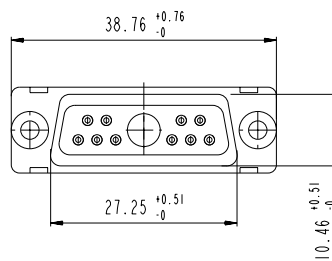
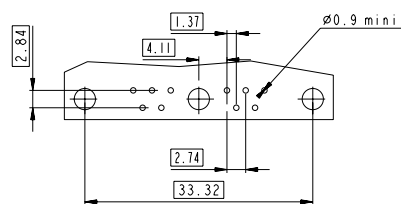
I3W3 FOR EXAMPLE

www.fciconnect.com				surface - <input checked="" type="checkbox"/> tolerance std ISO 1302 ISO 406 ISO 1101			projection 		mm 						
				TOLERANCES UNLESS OTHERWISE SPECIFIED											
rev	ecn no	dr	date	Dr	M PESSON	2006/11/15	ANGULAR	0.X	±0.3	size	A2	Scale	2:1		
A	LS06-0174	MPE	2006/11/15	Eng	P LEGARE	2006/11/15	LINEAR	0.XX	±0.1						
B	LS07-0273	MPE	2007/10/30	Chr	P LEGARE	2006/11/15	0° ±2°	0.XXX	±0.05	ECN	LS07-0273				
-	-	-	-	Appr	P LEGARE	2006/11/15	Product family	-	-	Spec ref					
-	-	-	-												
-	-	-	-												
-	-	-	-												
-	-	-	-												
								SUB FEMALE DMW		deg no		C01-8637-1751		Rev	B
								mixed power straight solder							
				catalog no				-		CUSTOMER		sheet 1 of 7			

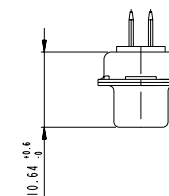







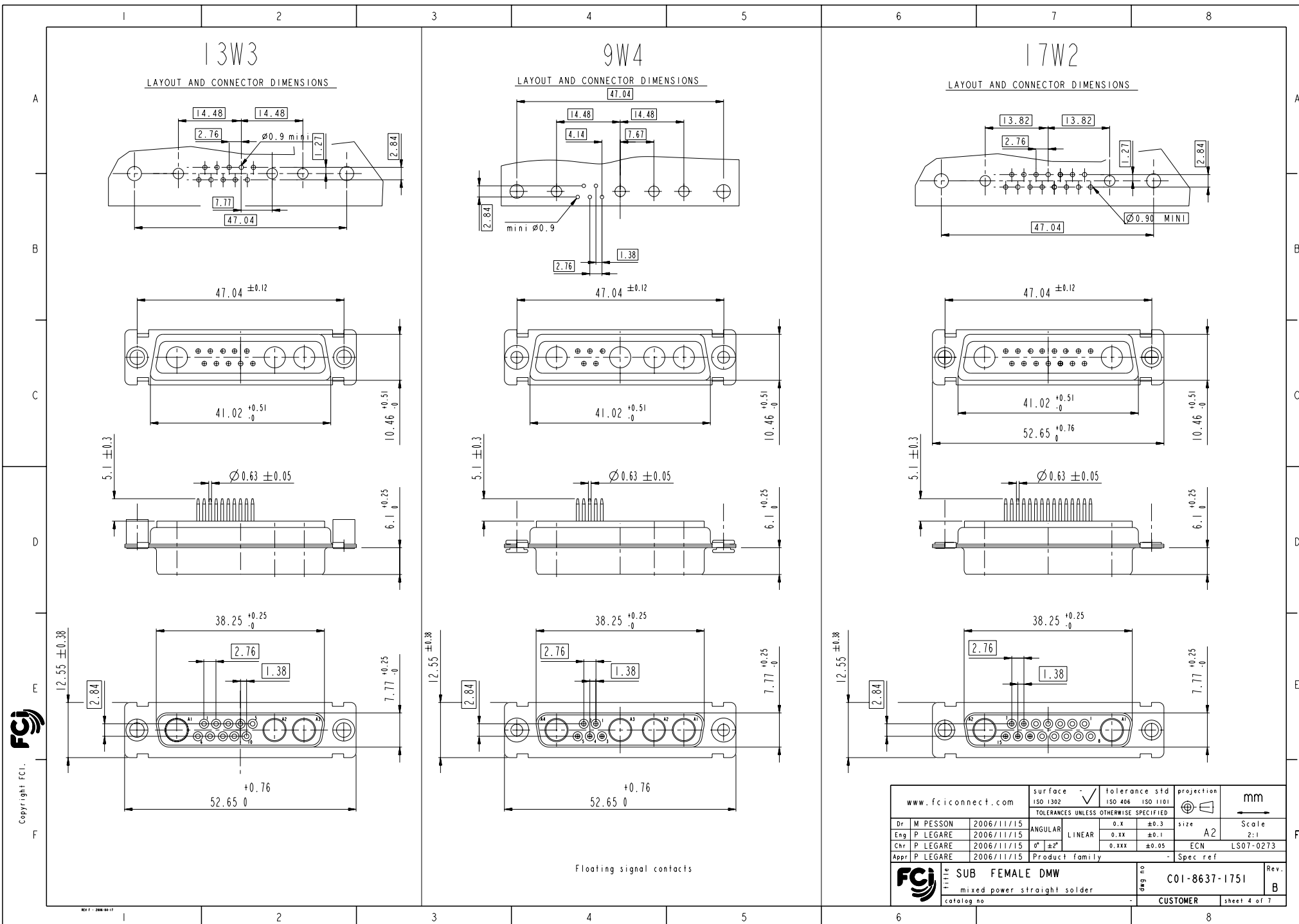
Floating signal contacts



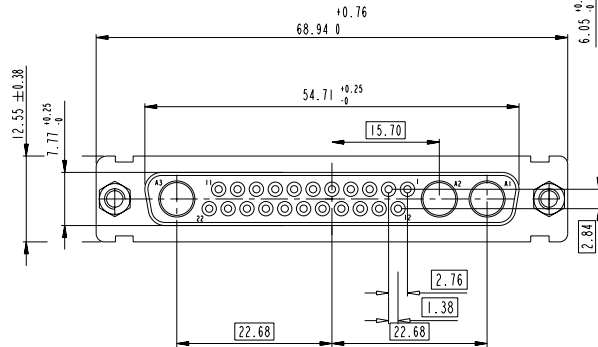
SIDE VIEW FOR
LAYOUTS: E A B C



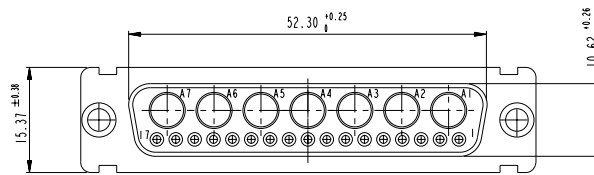
www.fciconnect.com				surface <input checked="" type="checkbox"/> tolerance std ISO 1302 ISO 406 ISO 1191 tolerances UNLESS OTHERWISE SPECIFIED			projection 		mm 	
Dr	M	PESSON	2006/11/15	ANGULAR	LINEAR	0.x	±0.3	size	A2	Scale
Eng	P	LEGARE	2006/11/15			0.xx	±0.1			2:1
Chr	P	LEGARE	2006/11/15	0° ±2°		0.xxx	±0.05	ECN	LS07-0273	
Appr	P	LEGARE	2006/11/15	Product family			-	Spec ref		
				title SUB FEMALE DMW mixed power straight solder catalog no			part no C01-8637-1751		Rev B	
				-			CUSTOMER		sheet 3 of 7	



LAYOUT AND CONNECTOR DIMENSIONS



LAYOUT AND CONNECTOR DIMENSIONS



Technical drawing of a mechanical part showing a dimension of $10.64^{+0.52}_{-0}$.

PDM: Rev: B STATUS: **Released** Printed: Jun 18, 2015

