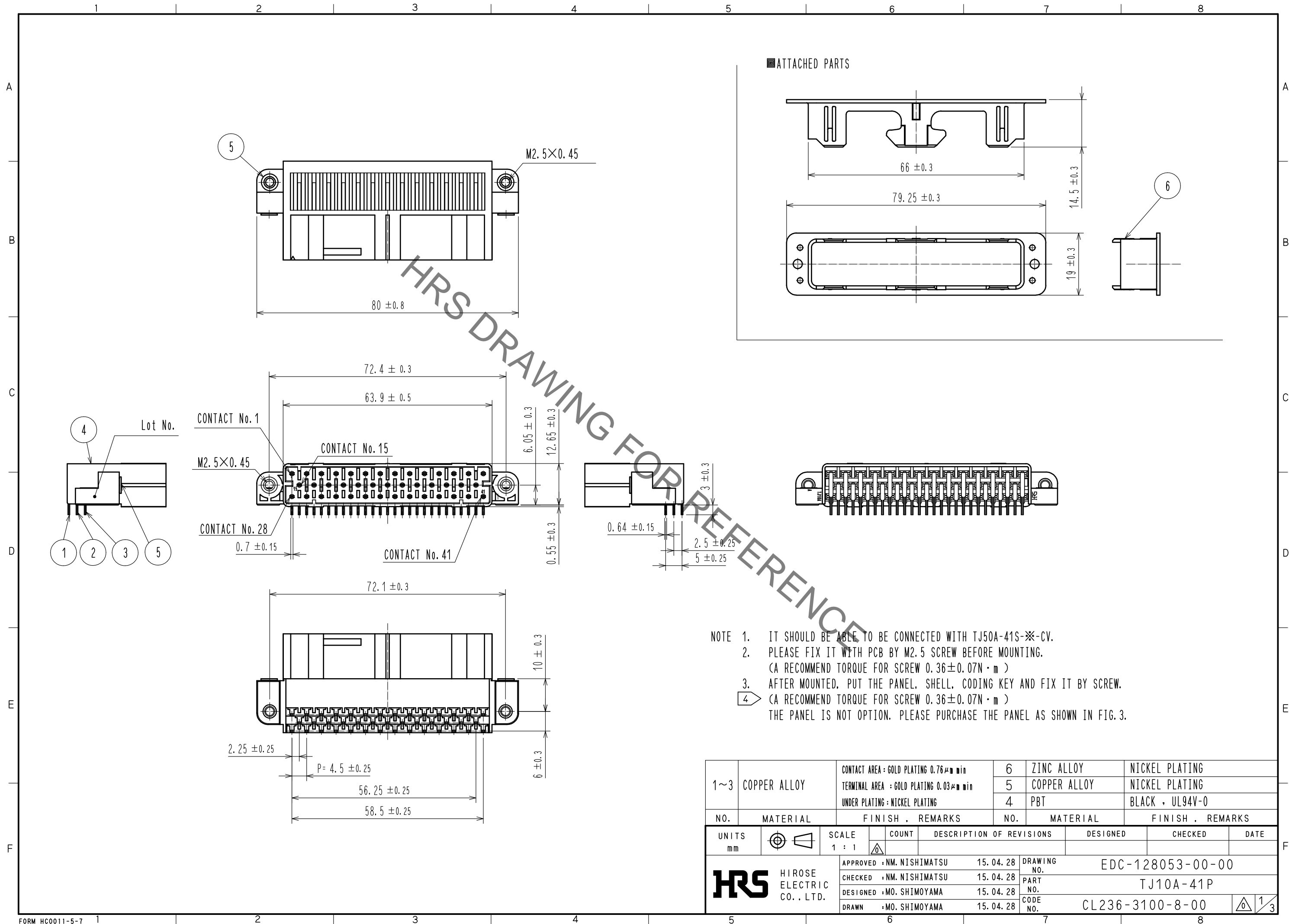
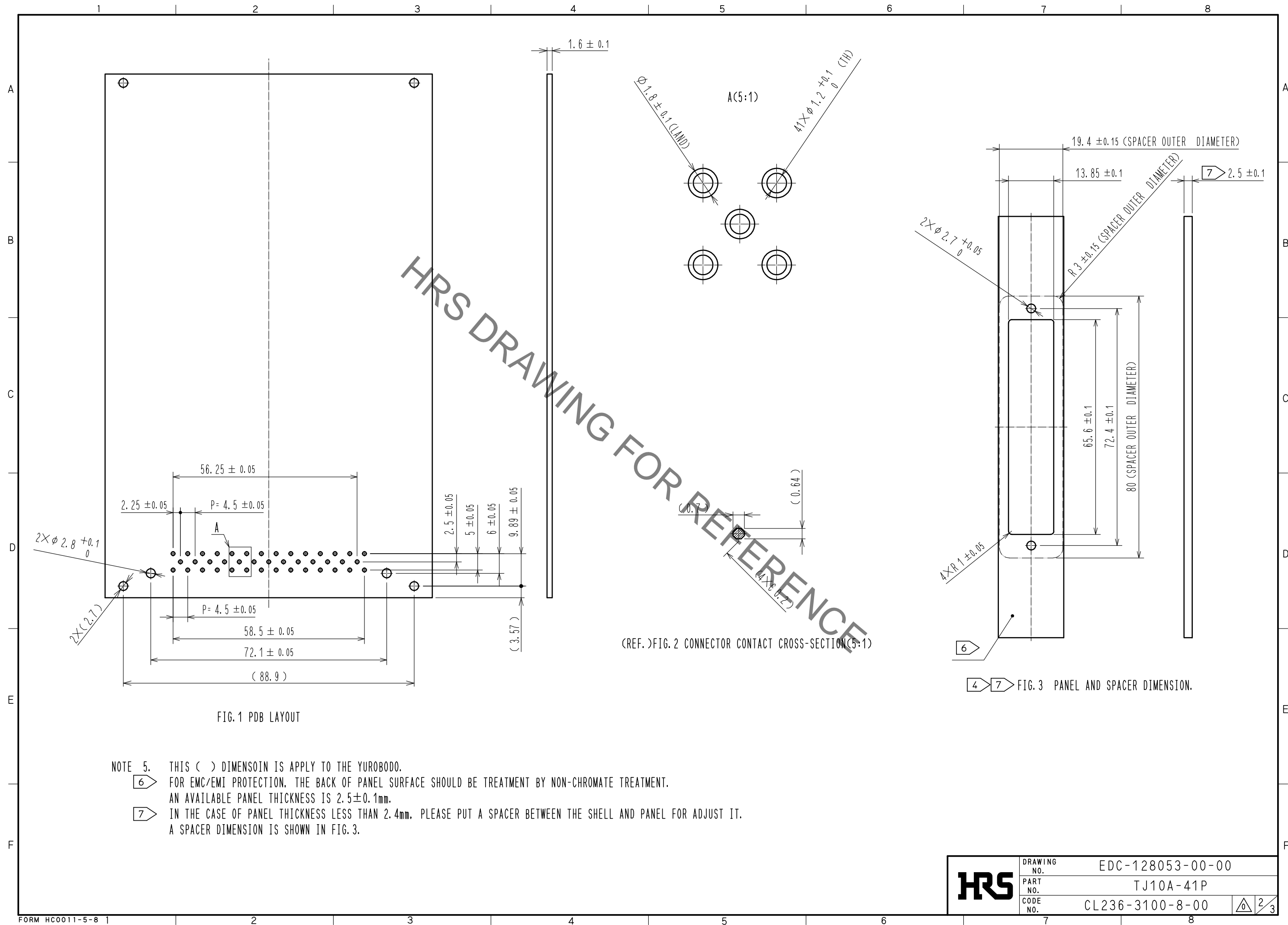


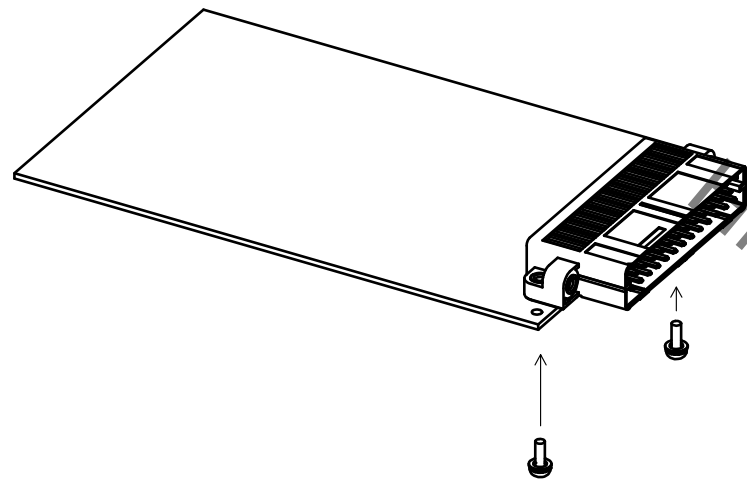
Jul.1.2019 Copyright 2019 HIROSE ELECTRIC CO., LTD. All Rights Reserved.
In case of consideration for using Automotive equipment / device which demand high reliability, kindly contact our sales window correspondents.



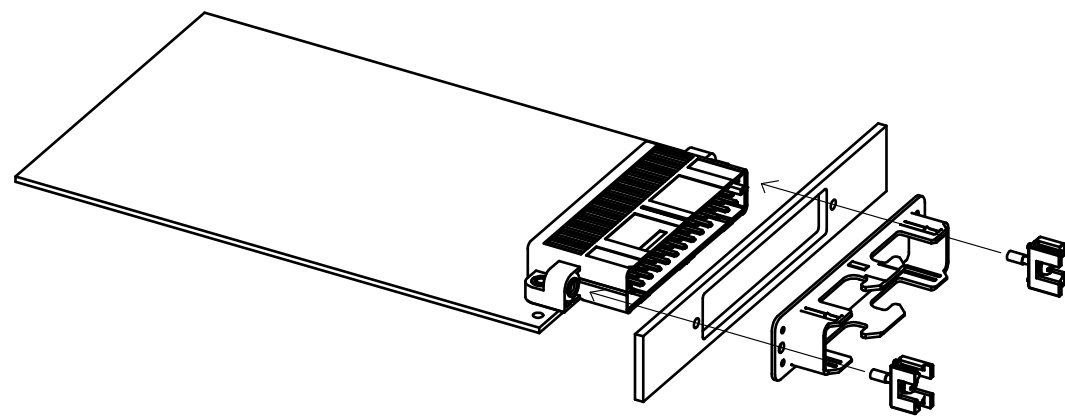


Jul.1.2019 Copyright 2019 HIROSE ELECTRIC CO., LTD. All Rights Reserved.
In case of consideration for using Automotive equipment / device which demand high reliability, kindly contact our sales window correspondents.

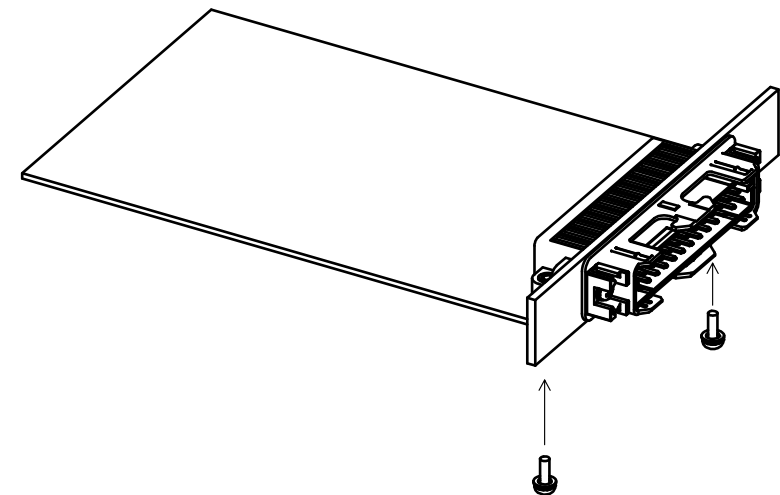
TJ SERIES RECOMMEND ASSEMBLY PROCEDURE



① FIXED THE CONNECTOR WITH PCB BY M2.5 SCREWS AND SOLDER IT.
(A RECOMMEND TORQUE FOR SCREW $0.36 \pm 0.07 \text{ N} \cdot \text{m}$)



② PUT THE PANEL, SHELL, CODING KEY AND FIX IT BY SCREW.
(A RECOMMEND TORQUE FOR SCREW $0.36 \pm 0.07 \text{ N} \cdot \text{m}$)



③ FINALLY, IT WAS FIX THE PANEL WITH THE PCB METAL FITTING BY SCREW.
NOTE: IF THE PANEL HAS BEEN FULLY SECURED WITH PCB METAL FITTING,
THE CONDUCTION BETWEEN CONNECTOR AND THE BACK OF PANEL CAN NOT BE SECURED.

HIRS DRAWING FOR REFERENCE

HRS	DRAWING NO.	EDC-128053-00-00		
	PART NO.	TJ10A-41P		
	CODE NO.	CL236-3100-8-00	<div><div></div></div>	<div><div>3</div><div>3</div></div>