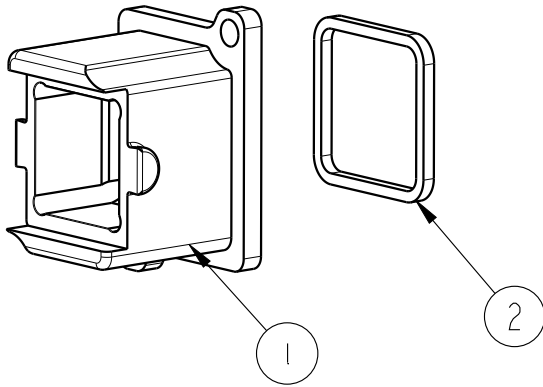
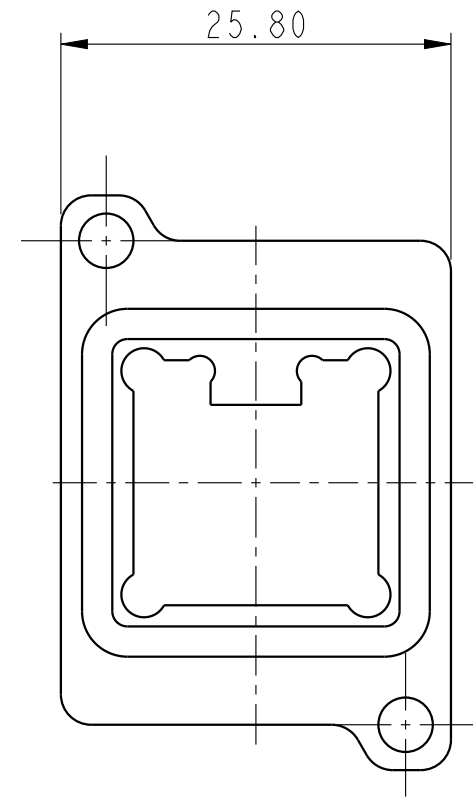
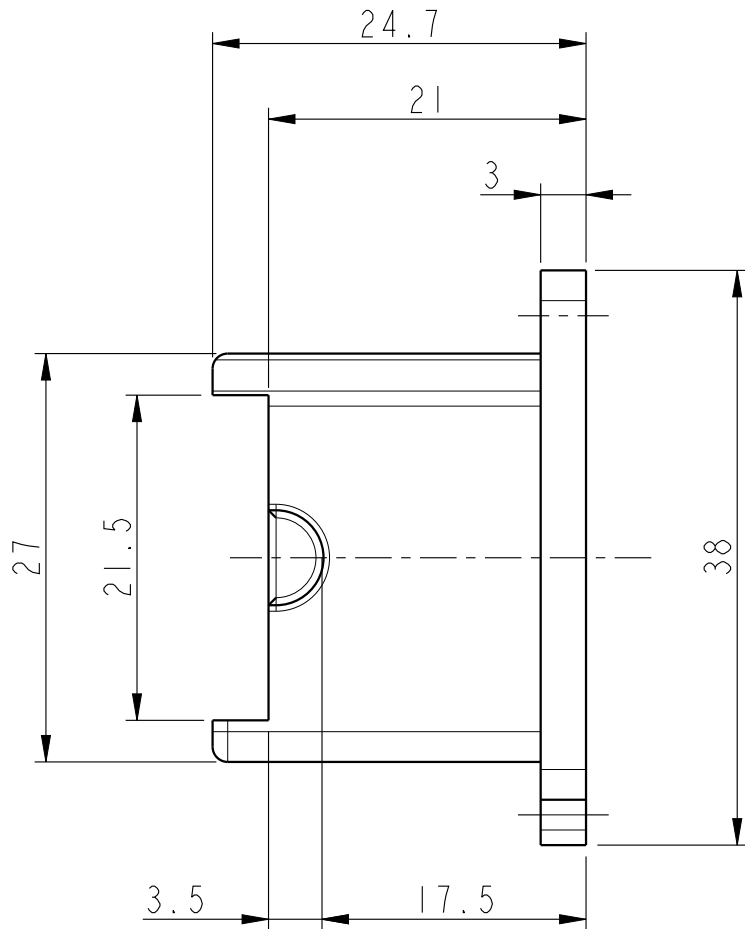
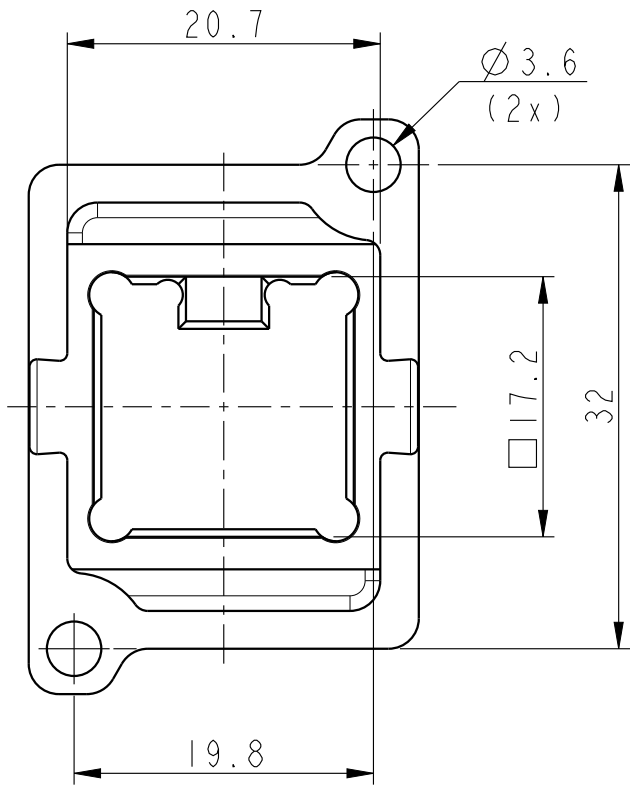


PART NUMBER
10138458-101LF



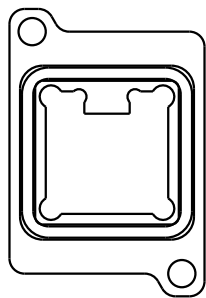
SL NO	DESCRIPTION	MATERIAL	PLATING
1	SCREWABLE RECEPTACLE BODY	ALUMINIUM	PASSIVATION
2	PANEL SEALING GASKET	SILICONE	-






NOTES :-

- PART WILL BE SUPPLIED ONLY IN ASSEMBLED FORM
- SCREWS TO BE USED ARE M3 X 6MM; MATERIAL-STAINLESS STEEL
- CASTED MOUNTING PANEL SHOULD HAVE ON ITS REAR SIDE AN INTEGRAL RECTANGULAR REINFORCED RIBS OF 3MM THICKNESS AND 4MM WIDTH ALONG THE MOUNTING SCREW PLANE AT THE TOP AND BOTTOM TO ACCOMODATE THE BLIND INTERNAL SCREW THREAD

PACKING CONFIGURATION  
(ASSEMBLED FORM)



spec ref				dr	Jibin John	2016/11/08	projection 	MM 	size	A3	scale	1:1	
tolerance std  ISO 406 ISO 1101	TOLERANCES UNLESS OTHERWISE SPECIFIED			eng	Varghese, Bone	2018/09/07			ecn no	ELX-I-30451-1			
				chr	-	-			rel level			Released	
				appr	K-Paul Biju	2018/09/07			product family			OCTIS	
surface   ISO 1302	linear	0.X	±0.3	Amphenol FCi	title	BULKHEAD (RECEPTACLE) FOR SFP OCTIS,26MM PITCH			dwg no	10138458		rev	C
		0.XX	±0.1										
		0.XXX	±0.05										
	angular	0°	±2°										