

**16 Pole
with Ground**
PROTECTION
IP65
RATING

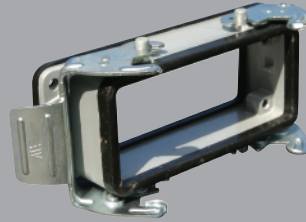


**Component
Parts**

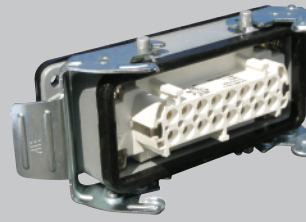
Pre-Assembled Units

Covers

Bulkhead Housing

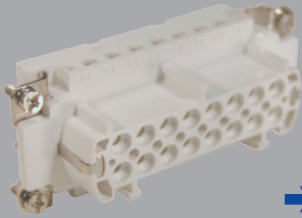


29042



403030

**FEMALE
Insert**

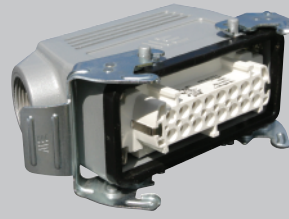


29022

Hood



29050
29050M

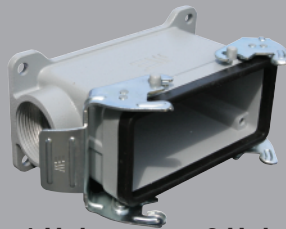


403035
403035M



29651

**Surface Mount
Housing**



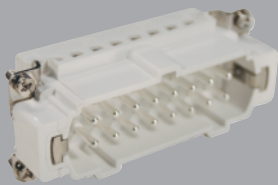
1 Hole 29056
29056M **2 Hole** 29057
29057M



1 Hole 403036
403036M **2 Hole** 403038
403038M

Standard Part Numbers are
NPT threads.
Part numbers with an "M"
are metric thread.

**MALE
Insert**



29023

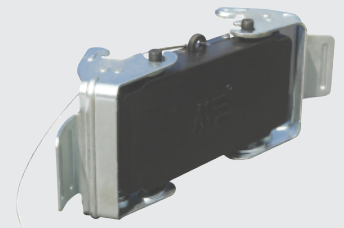
Hood



29043
29043M



403033
403033M



29654



Connectors should not be coupled
and decoupled under electrical load.

Inserts

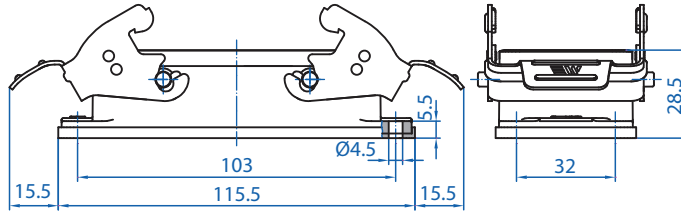
| | |
|---------------------------------|---------------------|
| Number of contacts | 16 Pole w/ ground |
| Electrical data to DIN EN61 984 | 16A 400V 6KV 3 |
| Current | 16A |
| Voltage | 400V |
| Rated Impulse Voltage | 6KV |
| Insulation Resistance | ≥10 ¹⁰ Ω |
| Temperature Range | -40 to 125°C |
| Flammability | UL94-V0 |

Contacts

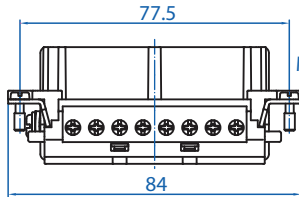
| | |
|--------------------|-----------------------------|
| Screw terminal | |
| Material | Copper alloy |
| Surface plated | hard-silver |
| Contact resistance | ≤ 1m Ω |
| Wire size | 2.5mm ² / 14 AWG |
| Torque | 0.5Nm |
| Stripping Length | 7.5mm |

Metal Hoods & Housings

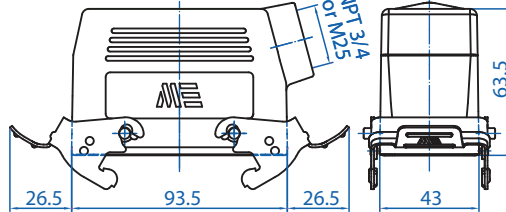
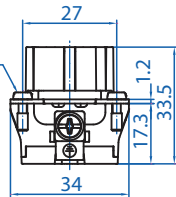
| | |
|------------------------------------|-----------------|
| Material | Aluminum |
| Surface | Powder coated |
| Seals | NBR |
| Degree of Protection Acc To | |
| DIN EN60529 for coupled connectors | IP65 |
| Thread Size | NPT 3/4" or M25 |



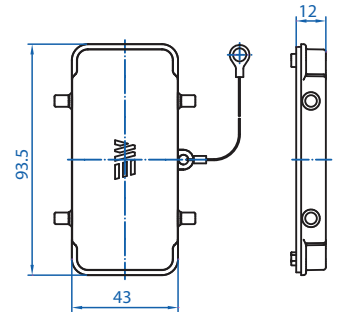
29042



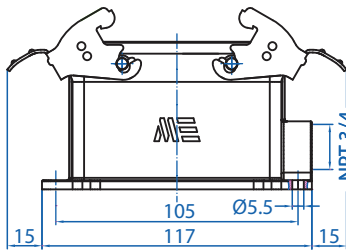
29022



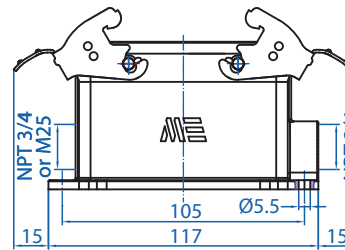
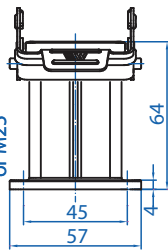
29050



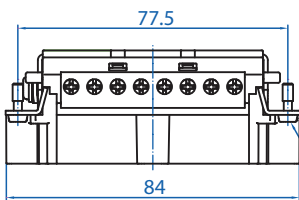
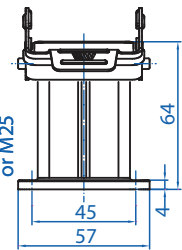
29651



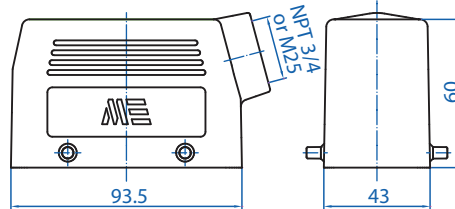
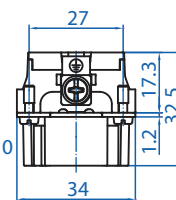
29056



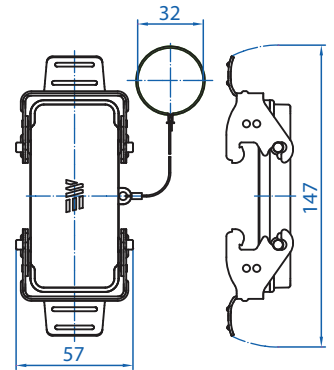
29057



29023



29043



29654



Connectors should not be coupled and decoupled under electrical load.

All dimensions are shown in millimeters. To convert to inches divide by 25.4.