

**16 Pole
with Ground**
PROTECTION
IP65
RATING

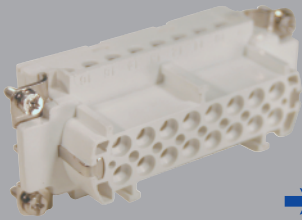


**Component
Parts**

Pre-Assembled Units

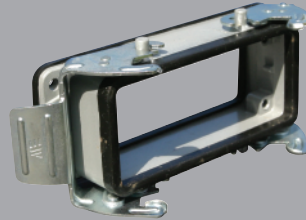
Covers

**FEMALE
Insert**



29022

Bulkhead Housing



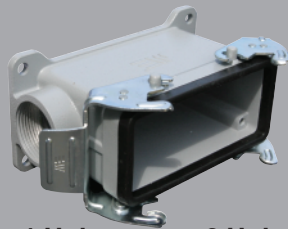
29042

Hood

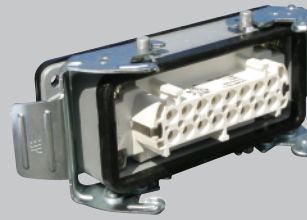


29050
29050M

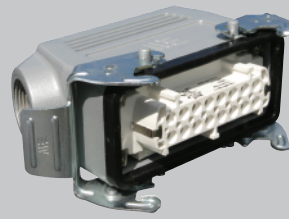
**Surface Mount
Housing**



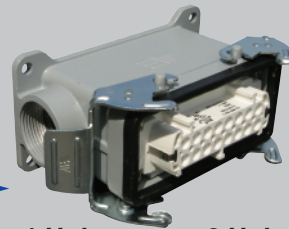
1 Hole 29056
29056M **2 Hole** 29057
29057M



403030



403035
403035M



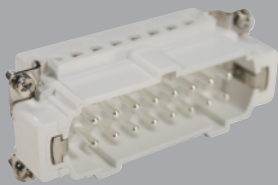
1 Hole 403036
403036M **2 Hole** 403038
403038M



29651

Standard Part Numbers are
NPT threads.
Part numbers with an "M"
are metric thread.

**MALE
Insert**



29023

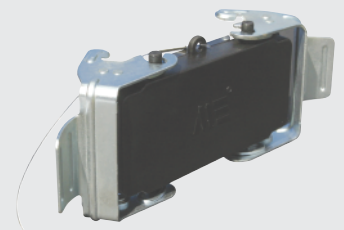
Hood



29043
29043M



403033
403033M



29654



Connectors should not be coupled
and decoupled under electrical load.

Inserts

Number of contacts	16 Pole w/ ground
Electrical data to DIN EN61 984	16A 400V 6KV 3
Current	16A
Voltage	400V
Rated Impulse Voltage	6KV
Insulation Resistance	≥10 ¹⁰ Ω
Temperature Range	-40 to 125°C
Flammability	UL94-V0

Contacts

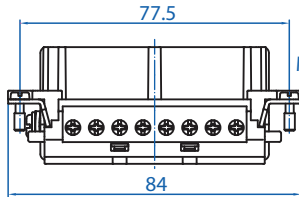
Screw terminal	
Material	Copper alloy
Surface plated	hard-silver
Contact resistance	≤ 1m Ω
Wire size	2.5mm ² / 14 AWG
Torque	0.5Nm
Stripping Length	7.5mm

Metal Hoods & Housings

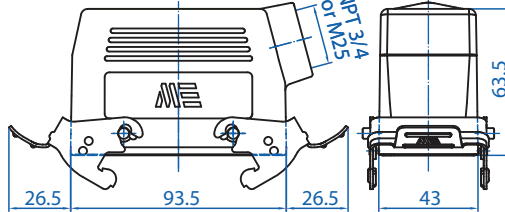
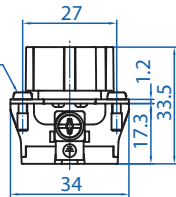
Material	Aluminum
Surface	Powder coated
Seals	NBR
Degree of Protection Acc To	
DIN EN60529 for coupled connectors	IP65
Thread Size	NPT 3/4" or M25



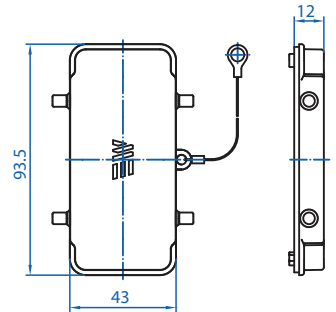
29042



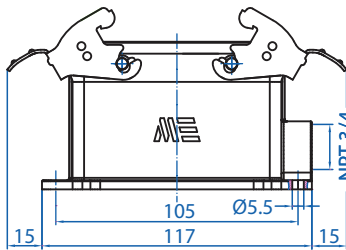
29022



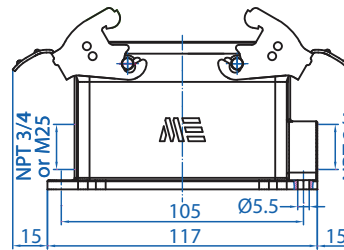
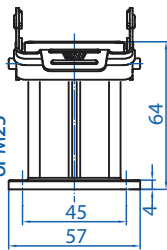
29050



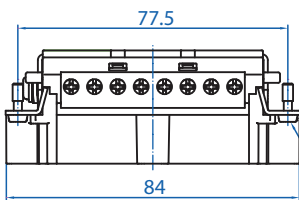
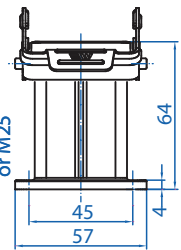
29651



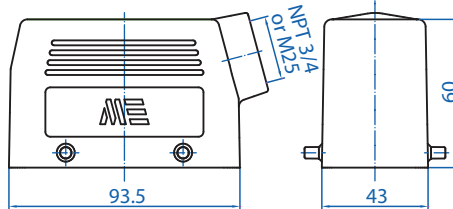
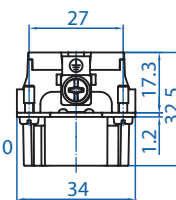
29056



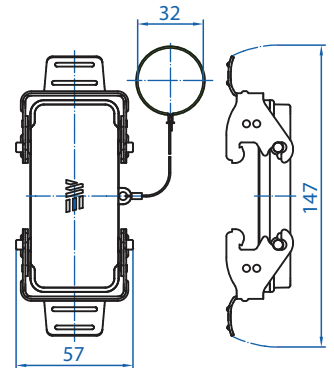
29057



29023



29043



29654



Connectors should not be coupled and decoupled under electrical load.

All dimensions are shown in millimeters. To convert to inches divide by 25.4.