

MICRO SWITCH

A DIVISION OF ANNAPOLIS-HONEYWELL REGULATOR COMPANY
 FREDERICK, MARYLAND

FED. MFR. CODE 91929

ACTUATOR-SWITCH

SKETCH 16061
 ISSUE 1

M JE-6

M

DRAWING NUMBER

ISSUE

REPLACES

RELEASE NO. SR 7022

9 OCT. '57

DL S

CHECK

REVISIONS

9 OCT. '57

CNT 9

CHECK

10 OCT. '57

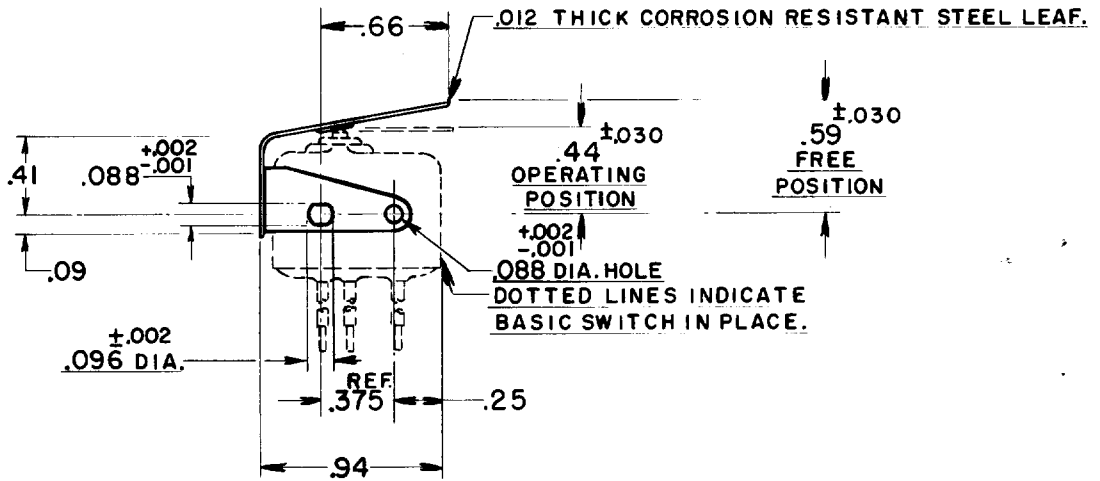
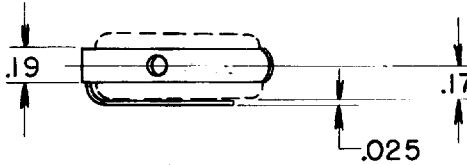
CHECK

7 OCT. '57

DRAWN

R.E.R.

FO-50378



THIS DRAWING COVERS A PROPRIETARY ITEM AND IS THE PROPERTY OF MICRO SWITCH, A DIVISION OF HONEYWELL. THIS DRAWING IS NOT TO BE COPIED OR USED WITHOUT THE APPROVAL OF MICRO SWITCH.

CHARACTERISTICS WITH ISEI BASIC SWITCH INSTALLED		ELECTRICAL DATA		SCALE FULL
OPERATING FORCE	-----12 OZ. MAX.	CONTACT ARRANGEMENT	BREAK DISTANCE	DO NOT SCALE PRINT
RELEASE FORCE	-----2 OZ. MIN.			UNLESS OTHERWISE SPECIFIED DIMENSIONS ARE IN INCHES
DIFFERENTIAL TRAVEL	-----0.025 MAX.			TOLERANCES ARE:
OVERTRAVEL	-----0.015 MIN.			ONE PLACE (.0) ±.030
				TWO PLACE (.00) ±.015
				THREE PLACE (.000) ±.005
				ANGLES ±
				WEIGHT