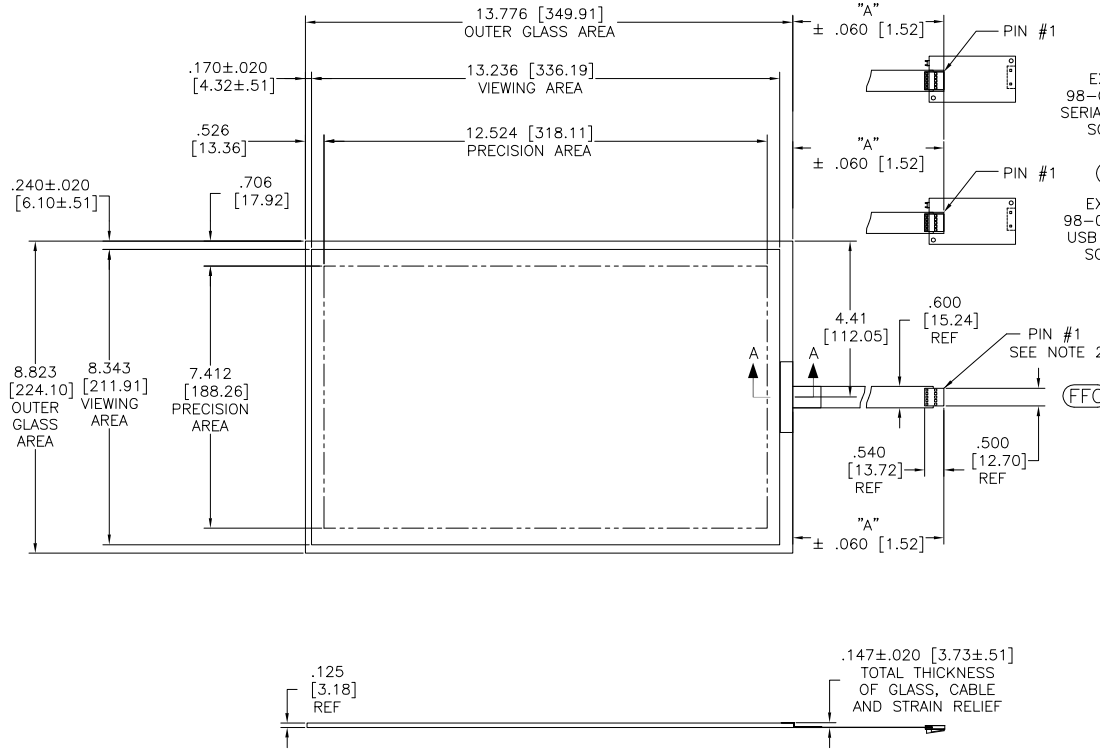


OGA DIAGONAL: 16.36 [415.52]
 VA DIAGONAL: 15.65 [397.41]
 PA DIAGONAL: 14.55 [369.64]

TOP LEVEL NUMBER	US NUMBER	TYPE	DIM "A" (TOTAL GLASS TO CONNECTOR)	A/G FINISH	PROD SPEC
17-9621-203	98-0003-3169-8	FFC	4.27" [108.46]	AG500	23655
17-9621-205	98-0003-2969-2	FFC	8.00" [203.20]	AG500	23655
17-9621-226	98-0003-2970-0	USB R	8.00" [203.20]	AG500	23655
17-9621-227	98-0003-2972-6	SER	8.00" [203.20]	AG500	23655
17-9621-221	98-0003-3313-2	SER	4.27" [108.46]	AG500	23655
N/A	98-0003-3448-6	FFC	6.00" [152.40]	AG500	23655
N/A	98-0003-3458-5	USB R	6.00" [152.40]	AG500	23655
N/A	98-0003-3459-3	SER	6.00" [152.40]	AG500	23655
N/A	98-0003-4228-1	USB R	8.00" [203.20]	WC100	34523
N/A	98-0003-4230-7	SER	8.00" [203.20]	WC100	34523
N/A	98-1100-0091-0	FFC	8.00" [203.20]	WC100	34523



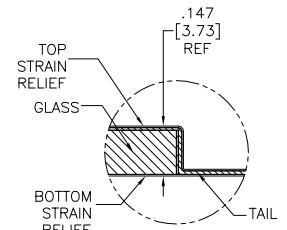
(SER)
 EXII-7720SC
 98-0003-2217-6
 SERIAL CONTROLLER
 SOLDER SIDE

(USB R)
 EXII-7760UC
 98-0003-2814-0
 USB CONTROLLER
 SOLDER SIDE

(FFC)
 SEE NOTE 2



ESD CLAMSHELL CASE IS USED WITH ALL NOV, USB AND SER TERMINATIONS.



SECTION A-A
 SCALE: NONE

- NOTES:
1. WEIGHT OF GLASS IN GRAMS: 622±10%
 2. NICOMATIC HOUSING P/N: OL05
 NICOMATIC RECEPTACLES (PINS) MATTE TIN PLATED P/N: 14106-12
 HOUSING ORIENTED WITH LATCH DOWN

PINOUT	
1	UL
2	UR
3	SHLD
4	LR
5	LL

UNITS INCHES [MM]

TOLERANCES UNLESS OTHERWISE SPECIFIED
 .X ±
 .XX ±.03 [.76]
 .XXX ±.015 [.38]
 ANGLES ±1°

THIRD ANGLE PROJECTION

DO NOT SCALE DRAWING

SCALE 1 = 1

3M 3M TOUCH SYSTEMS
 METHUEN, MA
 USA

© COPYRIGHT 2004
 THIS DOCUMENT IS COPYRIGHTED PROPERTY OF THE 3M COMPANY AND MAY NOT BE REPRODUCED WITHOUT 3M WRITTEN PERMISSION OR USED OR DISCLOSED FOR OTHER THAN 3M AUTHORIZED PURPOSES.

DRAWN S.Berard 10/09/08

K	REVISED PER CO 036256	4/13	SEB
J	REVISED PER CO 036099	2/13	SEB
H	REVISED PER CO 035587	10/12	SB
REV	CHANGE NOTICE	DATE	DRW
TITLE			
MARKETING DRAWING SCT32NN 15.65" W			
CAD FORMAT	AUTOCAD	SHEET 1 OF 1	
SIZE	C	DOCUMENT NO.	TSD-36245
REV	K		