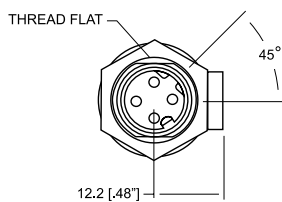
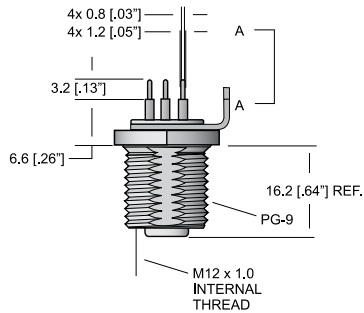


Industrial Ethernet Receptacle Connectors for PROFINET or Ethernet/IP Applications

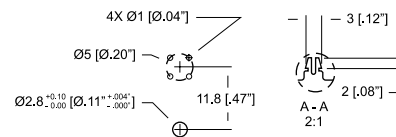
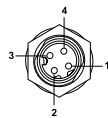


Type	0986 EFC 101
Product description	Receptacle connector, M12 female connector, 4-pole, D-coding, PCB contacts with board lock, chassis side thread PG 9.
Environmental	
Degree of protection	IP 67 / NEMA 6P
Operating temperature range	-25°C (-13°F) / +90°C (+194°F)
Mechanical	
Housing / Molded body	CuZn, nickel-plated
Pins	4D
Insert	PUR, black
Contacts	CuZn, gold over nickel plated
O-ring	Viton
Board lock	Phosphor bronze, tin-lead plated
Electrical	
Current rating	4 A
Voltage rating	250 V

The application of these products in harsh environments should always be checked before use.
 Specifications subject to alteration.

Pin assignment	Recommended PCB pattern
----------------	-------------------------

M12, Female 4-poles D-coding



Part number	Order number
0986 EFC 101	900000510

