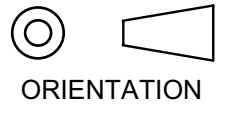


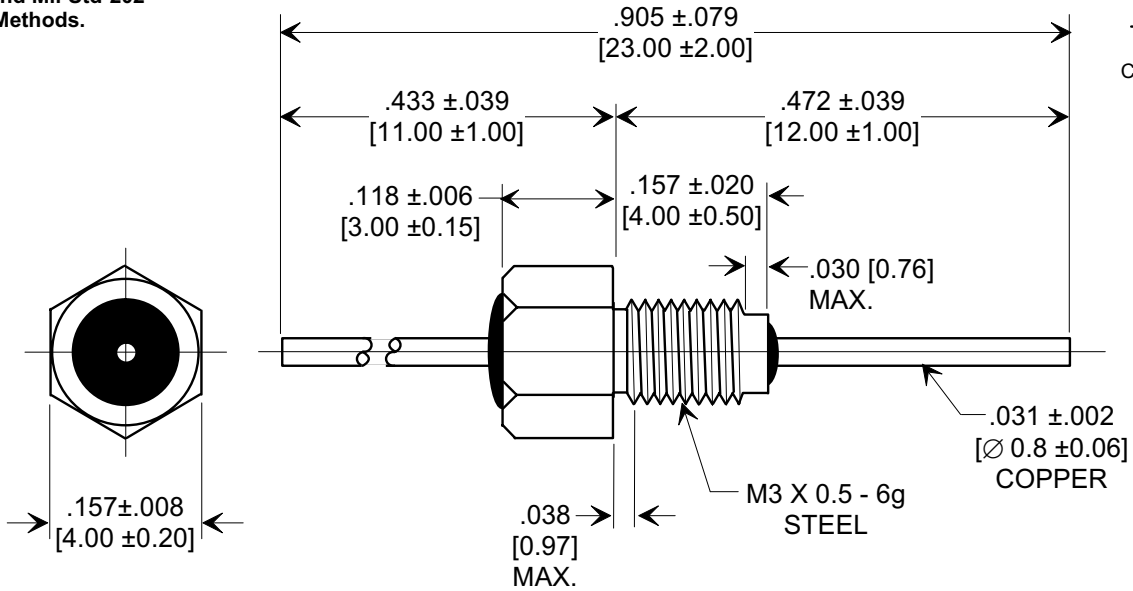
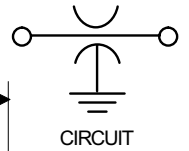
MARKETING SALES DRAWING

DIMENSIONS IN INCHES - DO NOT SCALE THIS DRAWING
DIMENSIONS IN METRIC []

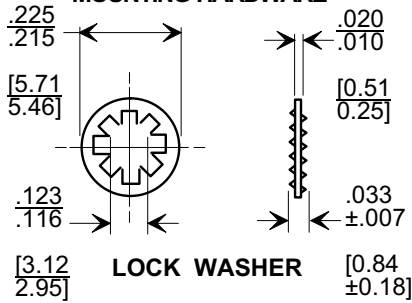
This drawing is the property of Tusonix, Inc., and may not be used, reproduced, published or disclosed to others without expressed authorization by Tusonix Inc.



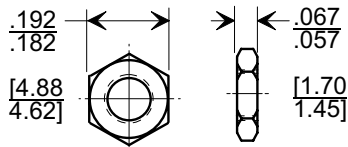
Electrical Testing per Tusonix standard test plans and Mil-Std-202 Test Methods.



MOUNTING HARDWARE



LOCK WASHER



HEX NUT

NOTES:

1. OPERATING TEMP. RANGE: -55°C TO +125°C.
2. SILVER PLATED CASE, LEAD, LOCK WASHER, AND HEX NUT.
3. MAX. RECOMMENDED MOUNTING TORQUE : 2.0 lb. - in. [0.23 Nm].
4. MAX. RECOMMENDED SOLDERING TEMPERATURE : 260° C. SEE INSTALLATION RECOMMENDATIONS.
5. NUT AND LOCK WASHER INCLUDED.
6. TUSONIX STANDARD PART NUMBER: 4400-683. TUSONIX RoHS COMPLIANT PART NUMBER: 4400-683 LF. CUSTOMER MUST SPECIFY STANDARD OR RoHS PART NUMBER WHEN ORDERING.
7. PART MARKING: TRADEMARK AND VARIATION NUMBER ON HEX FLATS. STANDARD PART: BLACK INK. RoHS PART: DARK GREEN INK FOR IDENTIFICATION.

| CAP.(pf) | TOLERANCE | DC WORKING VOLTAGE | | DC CURRENT (AMPS) | DWV (VDC) | MIN. NO LOAD INSERTION LOSS (db) @ 25°C PER MIL-STD-220 | | | | |
|----------|-----------|--------------------|-------|-------------------|-----------|---|--------|---------|-------|--------|
| | | 85°C | 125°C | | | 1 MHz | 10 MHz | 100 MHz | 1 GHz | 10 GHz |
| 5 | MAX | 300 | 200 | 10 | 500 | ---- | ---- | ---- | ---- | ---- |

| | |
|--------------|---|
| X-2015 Rev-0 | REVISION RECORD |
| | Original Release C.O. 20000104-1-04 |
| | ADDED AND REVISED NOTES. S.M. 02-14-06 |
| | 20060123-9-04 |

| | | |
|--|--------------------------------|-----------------|
| --TOLERANCES-- Unless Otherwise Specified | Title LINE FEED-THRU | |
| DECIMAL ± NOTED | Drawn S.M. 01-07-00 | Scale 5 X |
| ANGLES ± | Approved J.Mc. 01-07-00 | |
| TUSONIX TUCSON, ARIZONA | A | 4400-683 |