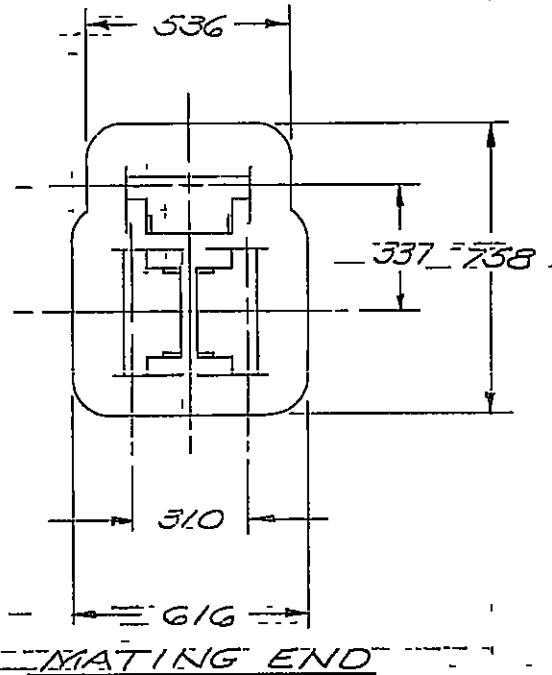
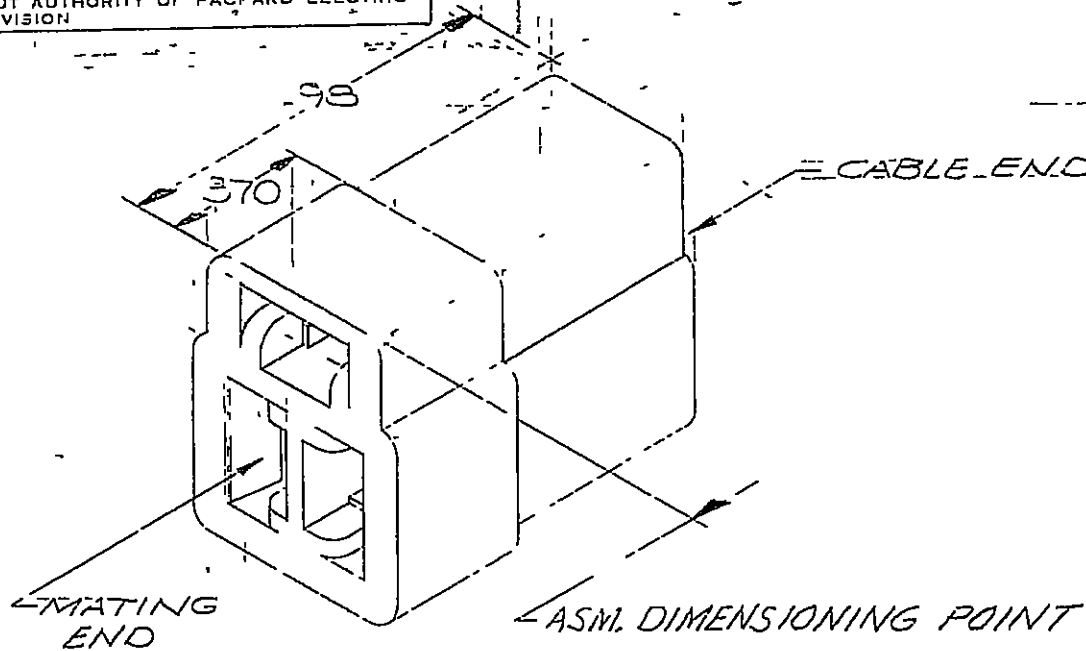


PACKARD ELECTRIC DIVISION
 GENERAL MOTORS CORPORATION
 WARREN, OHIO

DO NOT SCALE

THIS DRAWING AND DESIGN HEREON CONSTITUTES A PROPRIETARY DESIGN OF PACKARD ELECTRIC DIVISION AND IS NOT TO BE DUPLICATED OR REPRODUCED WITHOUT AUTHORITY OF PACKARD ELECTRIC DIVISION



C02D1504

99

2274146
 RELEP
 2152R
 32661

NOTE: MATING CONN 2965105 & 297223 REF.
 -OUTLINE DRAWING-

PART NO. **2965104** SIZE **A**

DATE	SYM	REVISION RECORD	C/N NO.
11-4-60	CO	REVISED & REDRAWN	3141
5-20-65	CO	PICTURE REVISED	20537
2-27-70	CO	.98 ± .01 WAS .982/.970	38750
7-26-71	CO	REE WAS 2962895 C SIZE	43708
		& MATL. WAS CYCOLAC (NAT.)	
7-27-75	CO	MATL SPEC REVISED	49146
300C85	-	ADDED CODE G901	85004
240C05	L3	MAT'L SPEC WAS R - 67662 & ADDED ECL TO DWG	274031

CODE NO **6900**
3901

TOLERANCE UNLESS OTHERWISE SPECIFIED
 DECIMAL 3 PLC. ±.005
 FRACTIONAL 2 PLC. ±.01
 ANGULAR

DWG DATE **3-15-56** SCALE **NONE** DR **L SUVERISON**

ROUTING CK **Rama 11-15**

DEPT APPP

OUTST APPR **R.E. Kirk 11-15**

REFERENCE **2962895 - "D" SIZE**

MATERIAL SPEC **M0592202 ABS HI IM NAT** CODE NO

NAME **CONN. BODY - '56 SERIES 3 FEMALE TERMINALS**

PART NO. **2965104** SIZE **A**