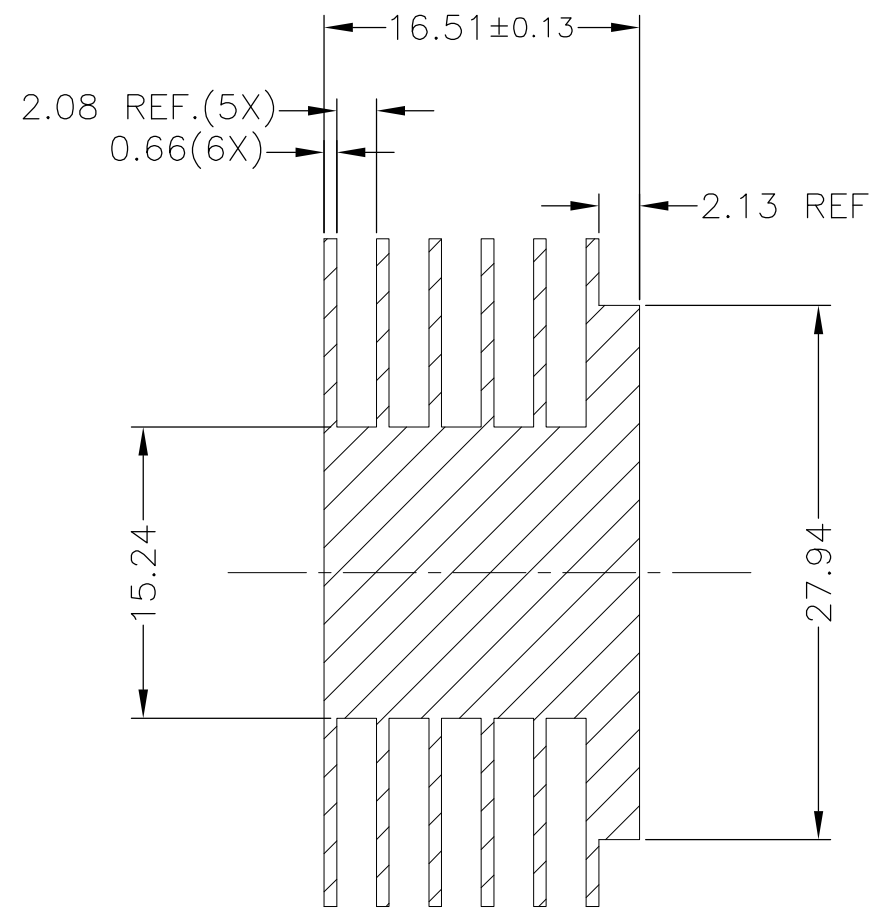
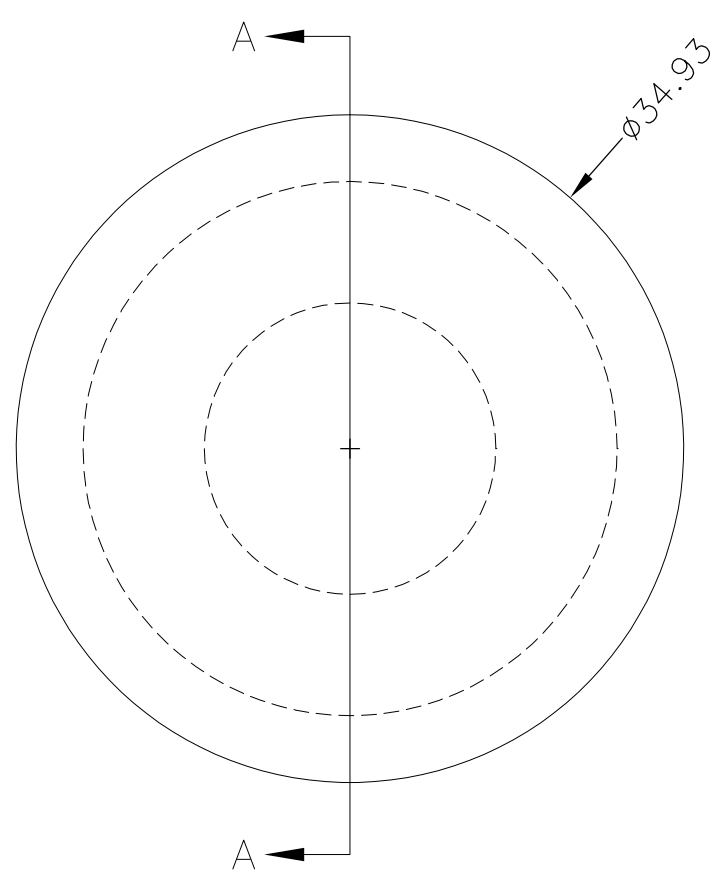


THIS DRAWING IS UNPUBLISHED. RELEASED FOR PUBLICATION
 © COPYRIGHT - By - ALL RIGHTS RESERVED.

LOC	DIST	REVISIONS			
P	LTR	DESCRIPTION	DATE	DWN	APVD
ES		A	REDRAW	27MAR2012	W.W C.W



SECTION A-A

P/N	MATERIAL	FINISH
1542216-3	2011-T3 ALUMINIUM	ANODIZE. BLACK THERMAL INTERFACE
1542216-4	2011-T3 ALUMINIUM	ANODIZE. BLACK SALEABLE PACKAGED VERSION

NOTE: UNLESS OTHERWISE SPECIFIED:
 1. INTERPRET DRAWING PER ASME Y14.5M-1994.

THIS DRAWING IS A CONTROLLED DOCUMENT.		DWN WINNG WANG 27MAR2012	TE Connectivity CHIP COOLERS HEAT SINK				
DIMENSIONS: mm		CHK SIMON LI 27MAR2012					
TOLERANCES UNLESS OTHERWISE SPECIFIED:		APVD COREL WANG 27MAR2012					
0-PLC ± 1-PLC ± 2-PLC ± 0.254 3-PLC ± 0.127 4-PLC ± ANGLES ± 1°		NAME					
MATERIAL		PRODUCT SPEC	SIZE	CAGE CODE	DRAWING NO	RESTRICTED TO	
FINISH		APPLICATION SPEC	A300779		C-1542216		
		WEIGHT	CUSTOMER DRAWING		SCALE 2:1	SHEET 1 OF 1	REV A