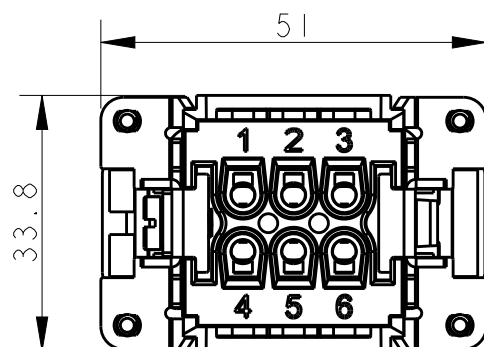
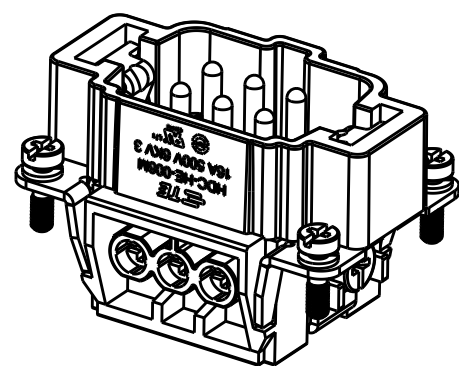
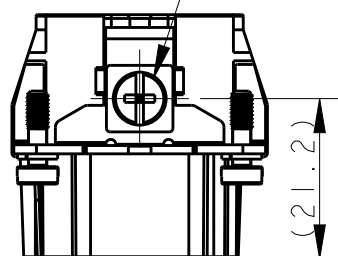


REVISIONS

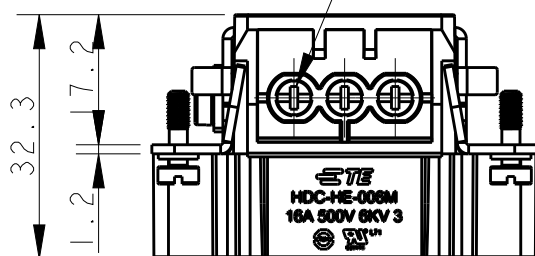
P	LTR	DESCRIPTION	DATE	DWN	APVD
A		INITIAL RELEASE	4APR2015	GY	CW
B		ECR-15-013759	27SEP2015	DW	CW



M4 screw, recommended tightening torque 1.2Nm



6 X M3 screw, recommended tightening torque 0.5Nm



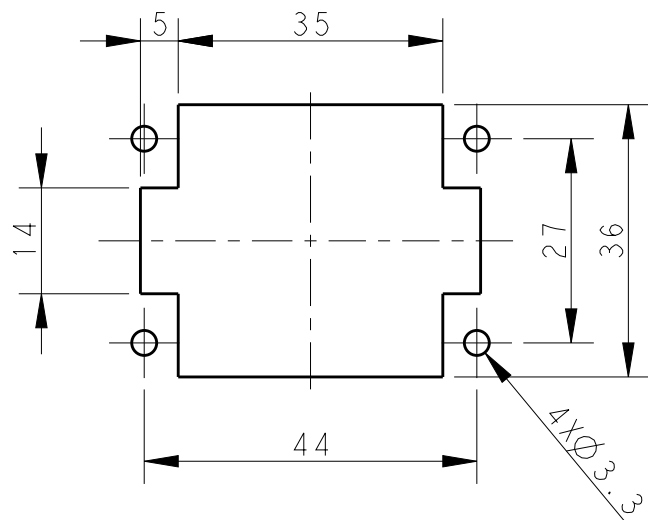
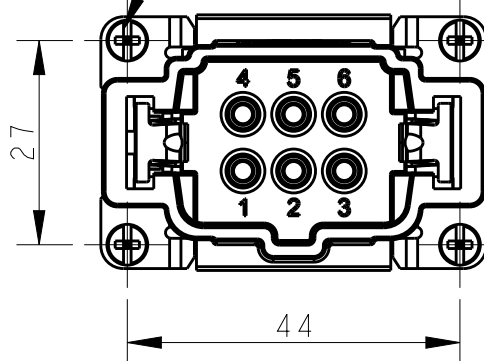
NOTES:

- TECHNICAL CHARACTERISTICS:
 INSULATION MATERIAL: PC
 RATED VOLTAGE: 500V
 RATED CURRENT: 16A
 INSULATION RESISTANCE: $\geq 400M\Omega$
 RATED IMPULSE VOLTAGE: 6KV
 POLLUTION DEGREE: 3
 FLAMMABILITY: UL94V-0
 MATING CYCLES: 500 CYCLES
 OPERATION TEMPERATURE: $-40^{\circ}C \sim +125^{\circ}C$
 WIRE RANGE: $0.5mm^2 \sim 2.5mm^2$ (AWG20-AWG14)
 CONTACT TYPE: SCREW CLAMP (M3)

注释:


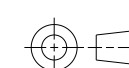
- 技术参数:
 绝缘材料: PC
 额定电压: 500V
 额定电流: 16A
 绝缘电阻: $\geq 400M\Omega$
 脉冲电压: 6KV
 污染等级: 3
 阻燃等级: UL94V-0
 插拔次数: 500 次
 工作温度: $-40^{\circ}C \sim +125^{\circ}C$
 接线范围: $0.5mm^2 \sim 2.5mm^2$ (AWG20-AWG14)
 接线类型: 螺丝压接 (M3)

4 X M3 screw, recommended tightening torque 0.5Nm



不使用防护外壳时芯件的安装开孔图
 Panel cut out for inserts for using without hoods/houseing

HE-006-M	T2040062101-000
DESCRIPTION	PART NUMBER

THIS DRAWING IS A CONTROLLED DOCUMENT.		DWN	Gino.Yao	4APR2015	 TE Connectivity
		CHK	Chris.Wang	4APR2015	
		APVD	Xiang.Xu	4APR2015	
		PRODUCT SPEC	108-137044		
DIMENSIONS:		TOLERANCES UNLESS OTHERWISE SPECIFIED:		NAME	
mm				HE-006-M	
		0 PLC	±-	APPLICATION SPEC	
		1 PLC	±-	114-137044	
		2 PLC	±-	WEIGHT	
		3 PLC	±-	-	
		4 PLC	±-	Customer Drawing	
		ANGLES	±-	SCALE	
MATERIAL		FINISH		1:1	
-		-		SHEET	
				A3 00779	
				C-T2040062101000	
				RESTRICTED TO	
				-	
				REV	
				B	