

LCR 081M

Medical Filtered Power Entry Modules with Fuse Holder



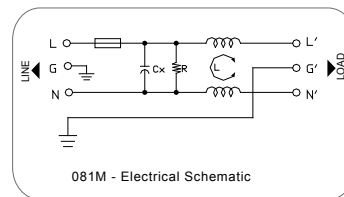
Features

Compact safety module, very low leakage current and easy to use power entry filters with safety fuse. Available with QD tabs or solder terminals.

Typical Applications

Medical equipment and for medical applications which requires integrated safety fuse.

Electrical Schematic



Specifications

| | |
|--------------------------|--------------------|
| Rated Voltage Max. (V) | 250 VAC Max. |
| Rated Current (A) | 1-10 A @ 40°C |
| Operating Frequency (Hz) | 50/60 Hz |
| Hipot Rating | |
| Line to Line | 1450 VDC |
| Line to Ground | 2250 VDC |
| Case | Plated Steel |
| Packaging Quantity | 126 Pcs per Carton |

| | |
|-------------------------------|------------|
| Leakage Current | |
| @ 250 VAC 50 Hz | 10 µA Max. |
| @ 115 VAC 60 Hz | 5 µA Max. |
| Climatic Category (EN60068-1) | 25/85/21 |
| IP Class | IP51 |

| Model No. | Rated Current (A) @ 40°C | Unit Weight (g) | Terminal Options | |
|---------------|--------------------------|-----------------|------------------|-------------|
| | | | In | Out |
| 081M.00101.00 | 1 | 62 | IEC Inlet Socket | QD 6.35*0.8 |
| 081M.00301.00 | 3 | 64 | IEC Inlet Socket | QD 6.35*0.8 |
| 081M.00601.00 | 6 | 64 | IEC Inlet Socket | QD 6.35*0.8 |
| 081M.01001.00 | 10 | 66 | IEC Inlet Socket | QD 6.35*0.8 |

Specifications are subject to change. Consult factory to verify specifications.

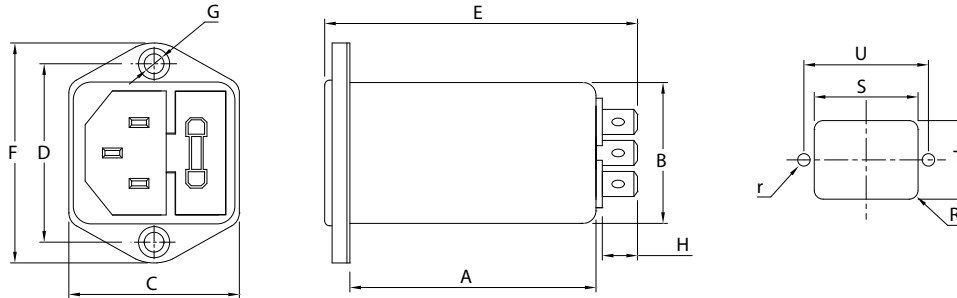
For more information on our filter products call us at: (800) 527-4362 or (714) 289-0055
 LCR, Radius Power, and Filter Concepts are now part of Astrodyne TDI

LCR 081M

Medical Filtered Power Entry Modules with Fuse Holder



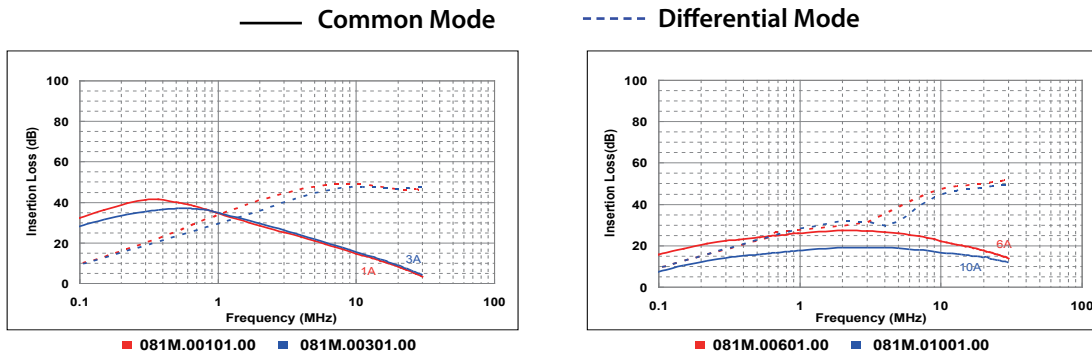
LCR 081M Mechanical Outlines



LCR 081M Mechanical Dimensions (mm)

| Model No. | A | B | C | D | E | F | G | H | I | R | S | T | U | r |
|---------------|------|------|----|------|----|------|--------|-----|----|---|------|------|------|-----|
| 081M.00101.00 | 50.9 | 28.5 | 34 | 36.1 | 66 | 44.5 | 2*Φ4.0 | 8.8 | 12 | 3 | 29.5 | 33.5 | 36.1 | 2.1 |
| 081M.00301.00 | 50.9 | 28.5 | 34 | 36.1 | 66 | 44.5 | 2*Φ4.0 | 8.8 | 12 | 3 | 29.5 | 33.5 | 36.1 | 2.1 |
| 081M.00601.00 | 50.9 | 28.5 | 34 | 36.1 | 66 | 44.5 | 2*Φ4.0 | 8.8 | 12 | 3 | 29.5 | 33.5 | 36.1 | 2.1 |
| 081M.01001.00 | 50.9 | 28.5 | 34 | 36.1 | 66 | 44.5 | 2*Φ4.0 | 8.8 | 12 | 3 | 29.5 | 33.5 | 36.1 | 2.1 |

LCR 081M Insertion Loss in dB Measured in a 50 Ω System



Specifications are subject to change. Consult factory to verify specifications.

For more information on our filter products call us at: (800) 527-4362 or (714) 289-0055
 LCR, Radius Power, and Filter Concepts are now part of Astrodyne TDI