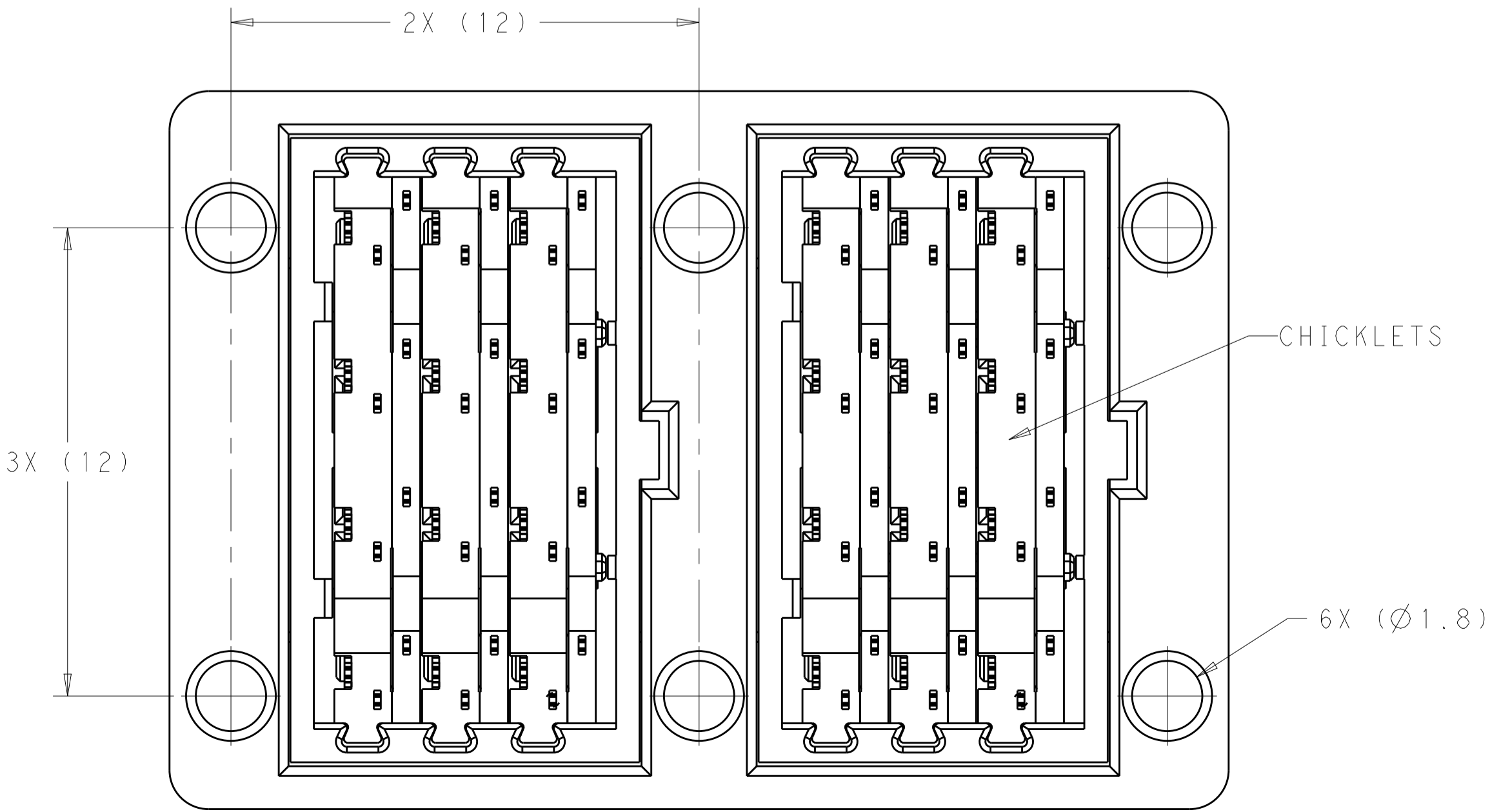
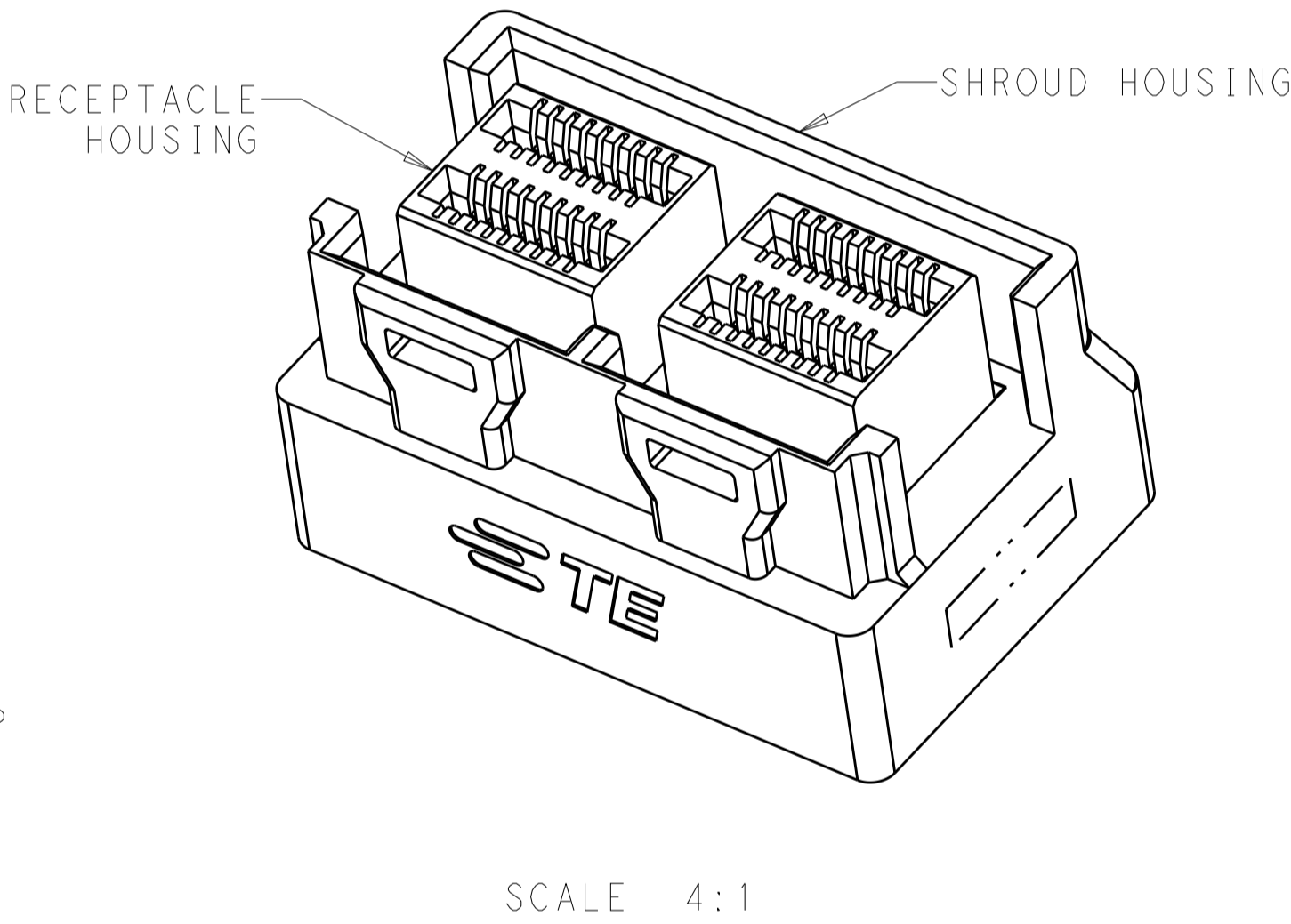
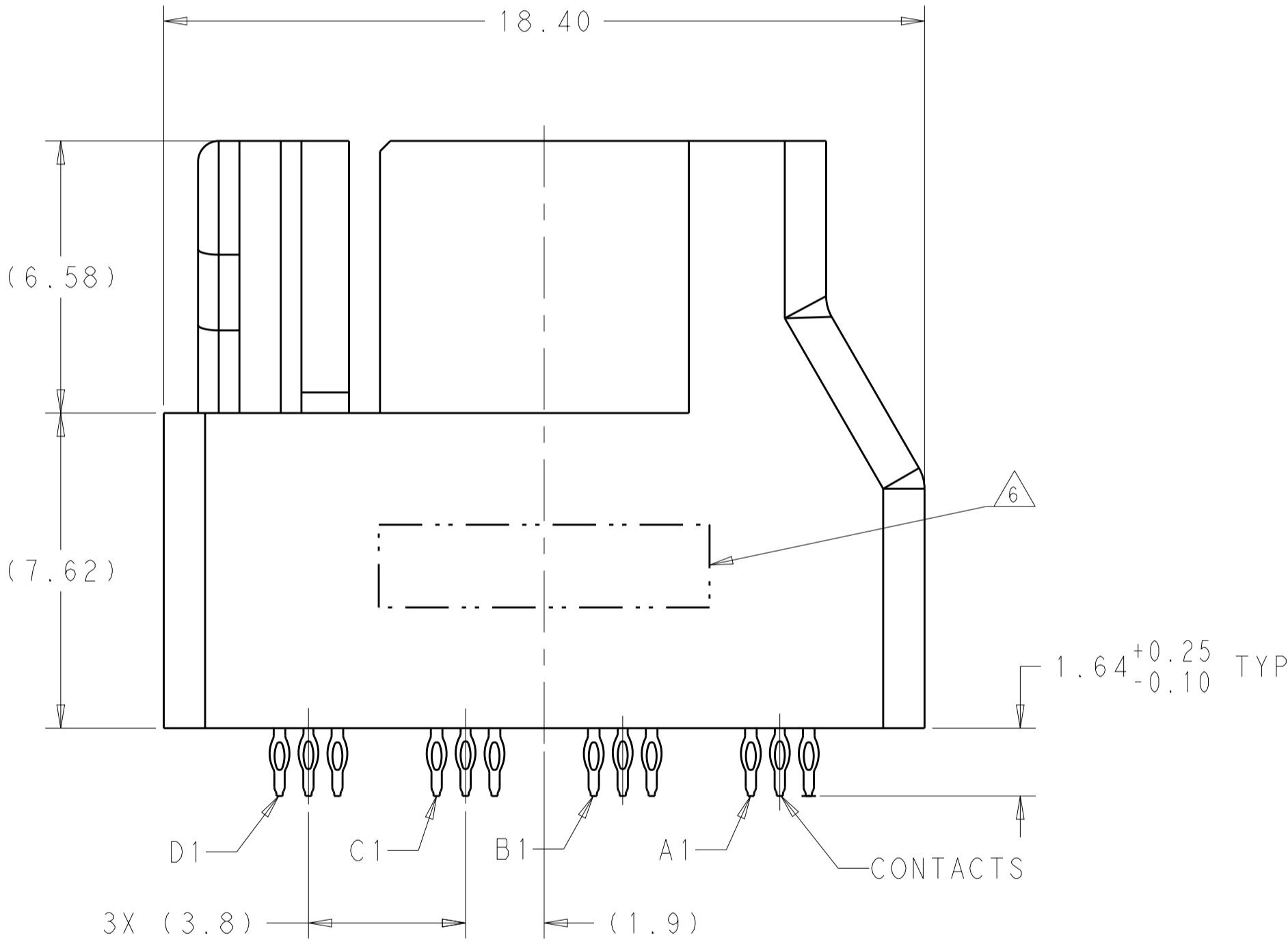
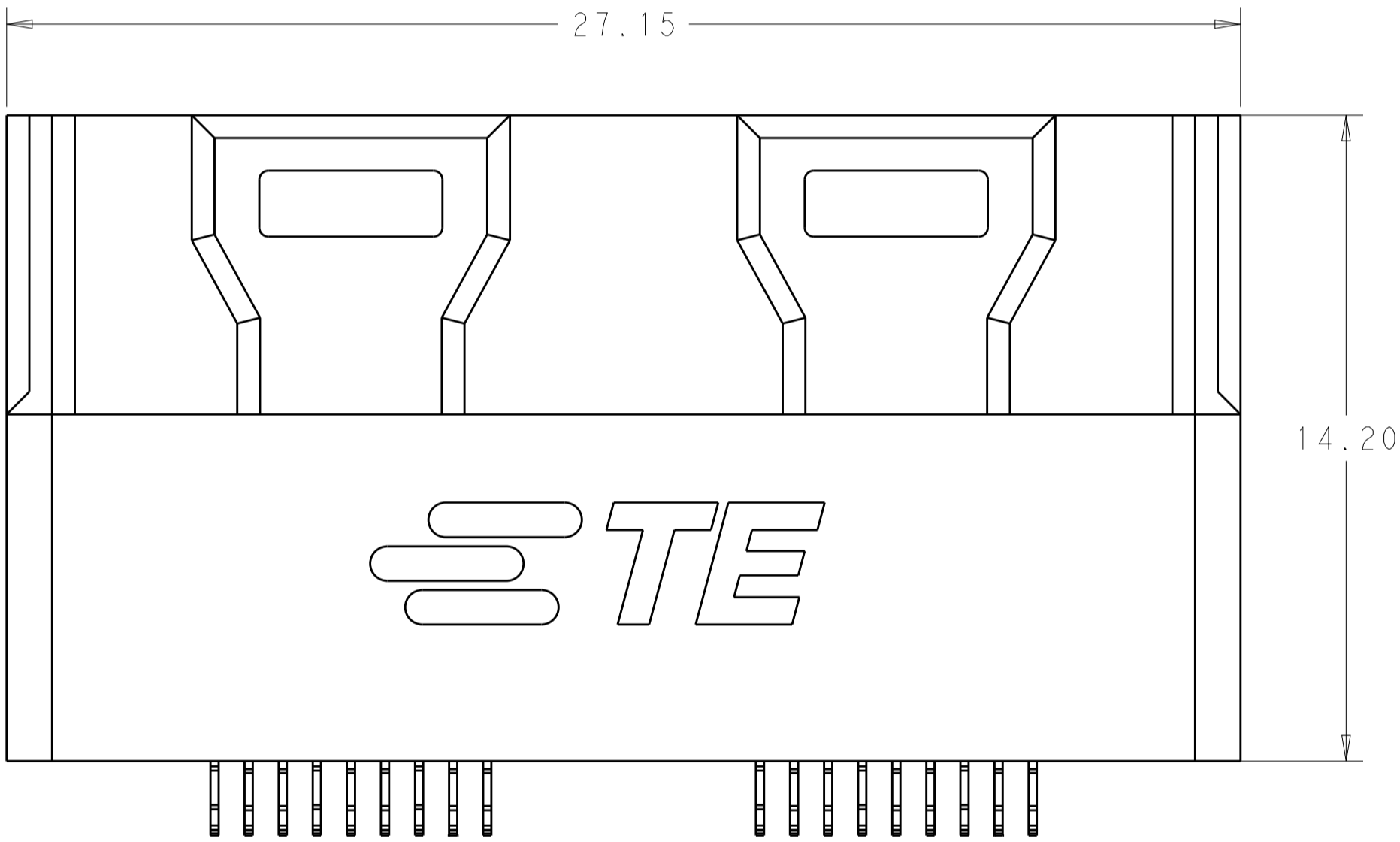
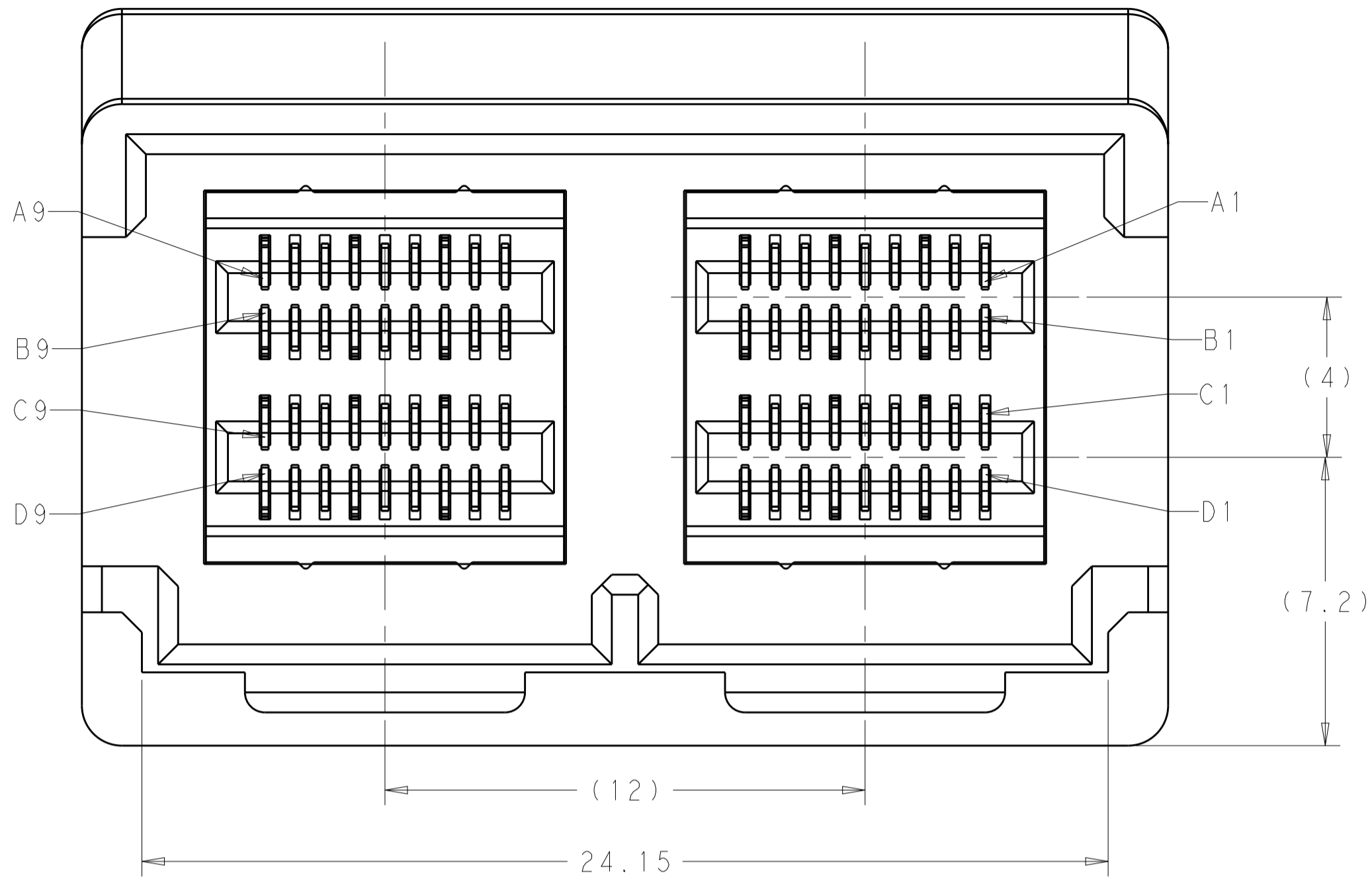



LOC	DIST	REVISIONS					
GP	00	P	LTR	DESCRIPTION	DATE	DWN	APVD
			A	REVISED PER ECO-15-000199	13JAN2015	AP	DG

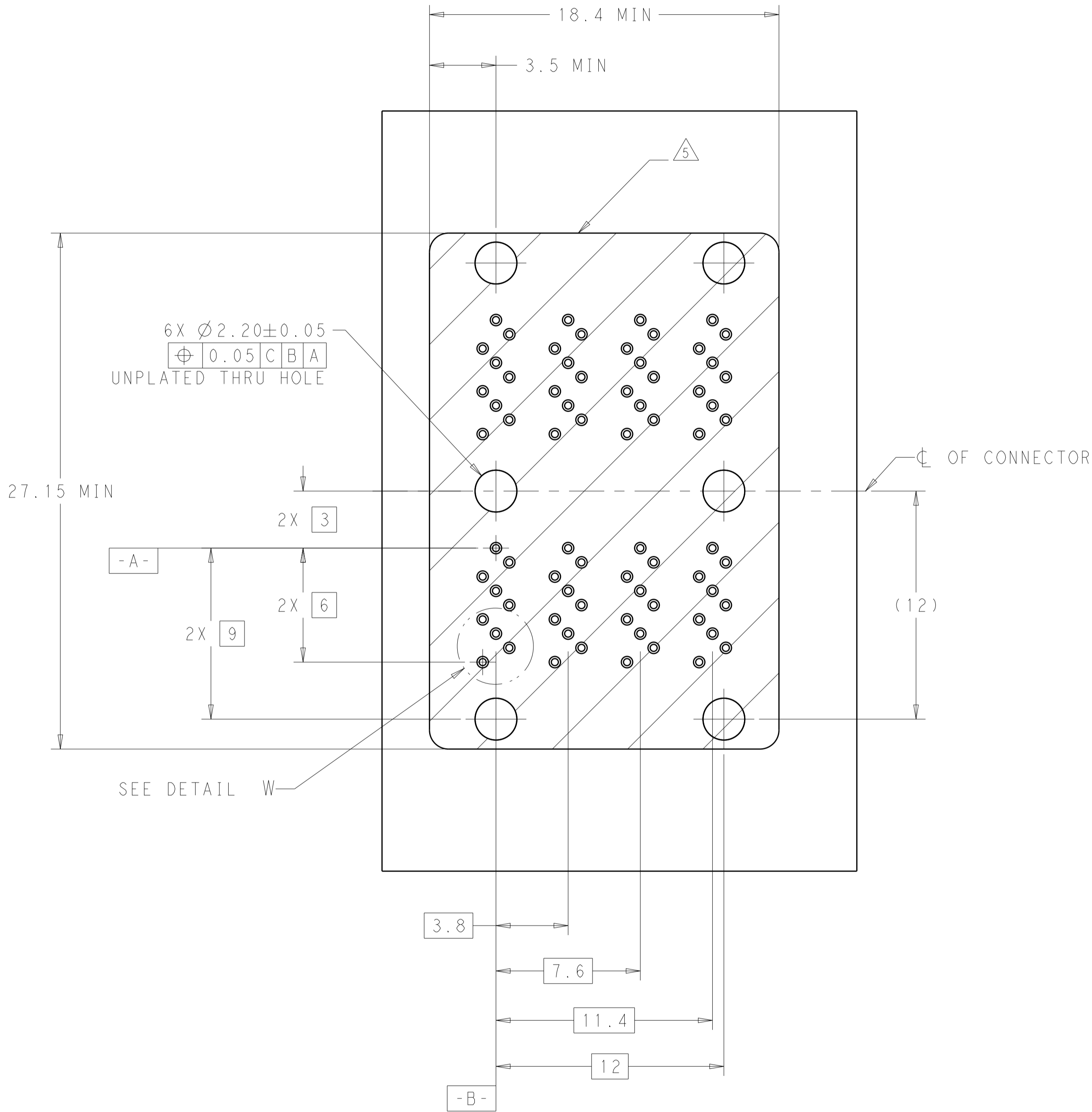
- 1 HOUSINGS AND CHICKLETS: LCP, BLACK, UL94V-O RATED.
CONTACTS: COPPER ALLOY.
- 2 CONFORMS TO THE REQUIREMENTS OF TE PRODUCT SPECIFICATION, 108-32038 BASED ON EIA/ECA-364-1000.01A (CONTROLLED ENVIRONMENT APPLICATIONS) ON MATING END. TIN PLATED ON PCB TAIL.
3. MATES WITH TE PLUG 2227603-1.
4. MOUNTING HARDWARE M2x1.35 SELF-THREADING SCREW
SCREW LENGTH OF FASTENER = PCB THICKNESS + 3.0mm MAX (1.75mm MIN) MOUNTING HARDWARE NOT INCLUDED.
- 5 RECOMMENDED COMPONENT KEEP OUT ZONE.
- 6 PART NUMBER AND DATE CODE MARKED IN APPROXIMATE AREA SHOWN.



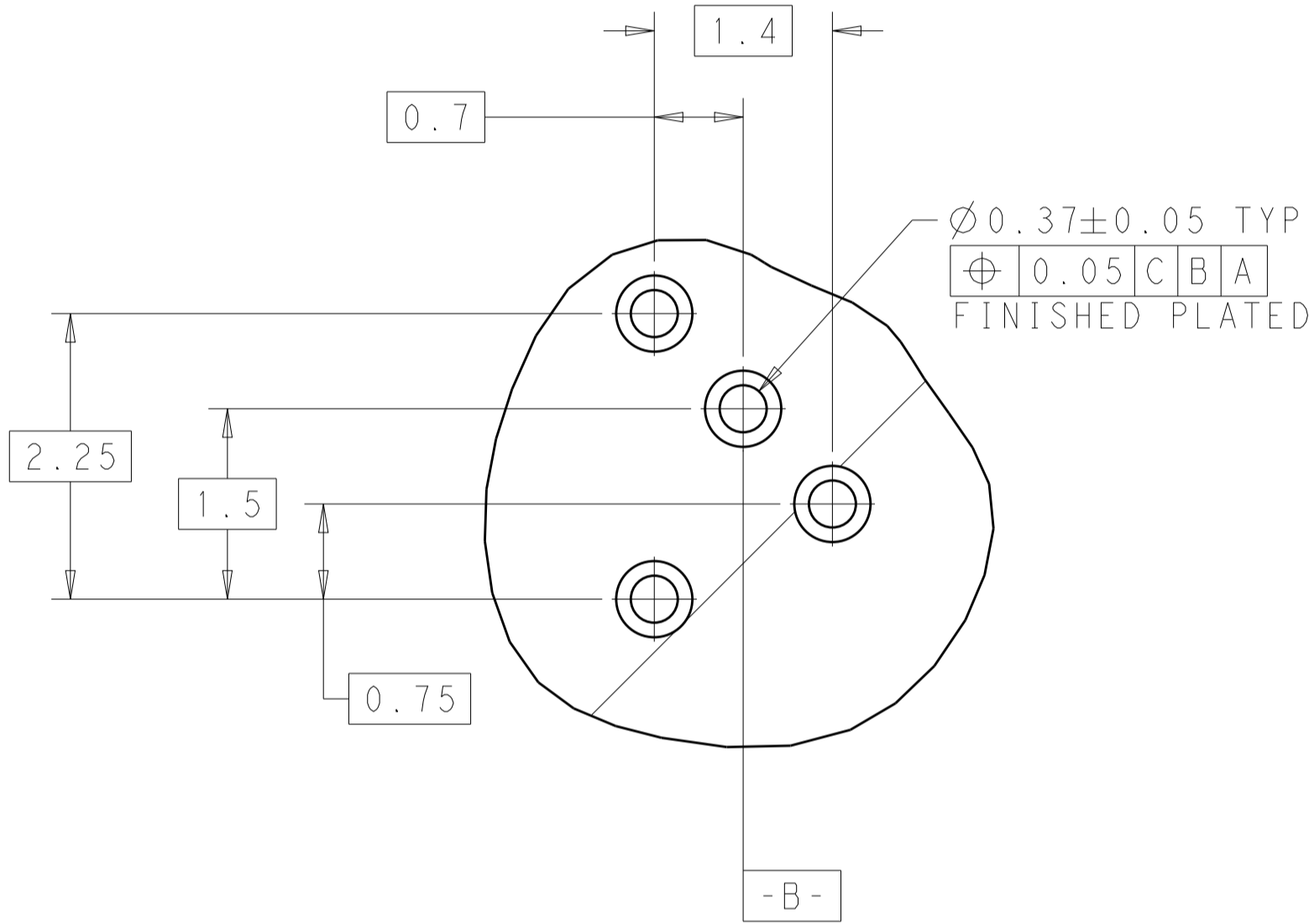
2227640-1
PART
NUMBER

THIS DRAWING IS A CONTROLLED DOCUMENT.		DWN R. TREA 26DEC2012	 TE Connectivity		
		CHK R. HENRY 26DEC2012			
DIMENSIONS: mm		TOLERANCES UNLESS OTHERWISE SPECIFIED:	NAME	RECEPTACLE ASSEMBLY, 1X2, VERTICAL, INTERNAL MINI SAS HD	

LOC		DIST		REVISIONS					
GP			00	P	LTR	DESCRIPTION	DATE	DWN	APVD
				-		SEE SHEET 1	-	-	-



RECOMMENDED PCB LAYOUT
SCALE 6:1



DETAIL W
SCALE 20:1

THIS DRAWING IS A CONTROLLED DOCUMENT.		DWN R.TREA	26DEC2012	TE Connectivity	
		CHK R.HENRY	26DEC2012		
DIMENSIONS:		TOLERANCES UNLESS OTHERWISE SPECIFIED:		NAME	
mm		0 PLC \pm		PRODUCT SPEC	
		1 PLC \pm		108-32038	
		2 PLC ± 0.10		APPLICATION SPEC	
		3 PLC \pm		114-32101	
		4 PLC \pm		WEIGHT	
MATERIAL		FINISH		CUSTOMER DRAWING	
-		-		SCALE 4:1 SHEET 2 OF 2 REV A	