



## Features

- Long life carbon element
- Assortment of resistance tapers
- 45 mm, 60 mm and 100 mm travel lengths
- Single and dual gang elements
- Long operational life
- Tracking error within  $\pm 2$  dB



## PTF Series Long Life Slide Potentiometer

### Electrical Characteristics

|                                 |                           |
|---------------------------------|---------------------------|
| Standard Resistance Range       | ..... 1K ohms to 1 megohm |
| Standard Resistance Tolerance   | ... $\pm 20$ %            |
| End Resistance                  | ..... 1 ohm max.          |
| Insulation Resistance @ 500 VDC | ..... 100 megohms min.    |
| Dielectric Withstanding Voltage | ..... 1000 VAC            |
| Tracking Error                  | ..... $\pm 2$ dB          |
| Standard Taper                  | ..... Linear, Audio       |
| Power Rating - Linear           |                           |
| 45 mm                           | ..... 0.25 watt           |
| 60 & 100 mm                     | ..... 0.5 watt            |
| Power Rating - Audio            |                           |
| 45 mm                           | ..... 0.125 watt          |
| 60 & 100 mm                     | ..... 0.25 watt           |
| Slider Noise                    | ..... 60 mV max.          |

### Environmental Characteristics

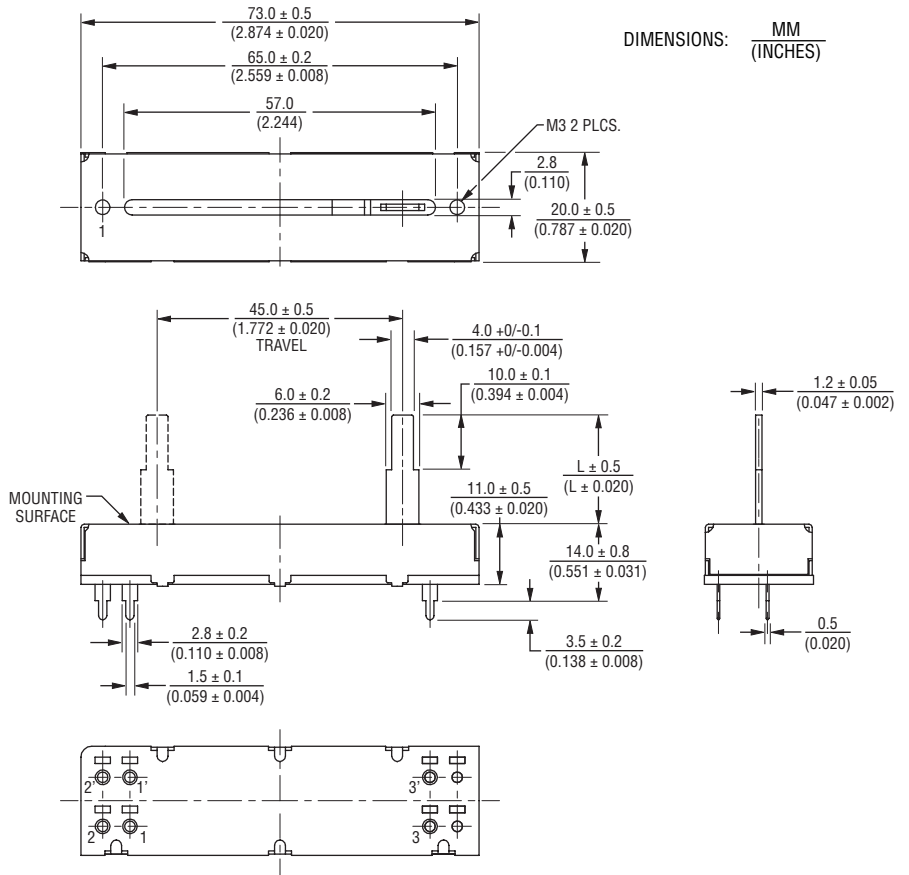
|                             |                            |
|-----------------------------|----------------------------|
| Operational Life            | ..... 100,000 cycles       |
| TR Shift                    | ..... $\pm 15$ %           |
| Operating Temperature Range | ..... $-10$ °C to $+55$ °C |
| Resistance to Solder Heat   | ..... $\pm 5$ %            |

### Mechanical Characteristics

|                     |                                      |
|---------------------|--------------------------------------|
| Mechanical Travel   | ..... See Product Dimensions         |
| Operating Force     | ..... 50 gf                          |
| Stop Strength       | ..... 5 kgf min.                     |
| Shaft Axial Force   | ..... 10 kgf min.                    |
| Shaft Wobble        | .. $2(2 \times L/25)$ mm p-p max.    |
| Soldering Condition |                                      |
| Manual              | ..... $300$ °C $\pm 5$ °C for 3 sec. |
| Wave                | ..... $260$ °C $\pm 5$ °C for 5 sec. |
| Wash                | ..... Not recommended                |

### Product Dimensions

#### 45 mm Length of Travel Lever End Style "A"



#### Mounting Hole Detail



### Schematics

#### Single Gang



#### Dual Gang



\*RoHS Directive 2002/95/EC Jan 27, 2003 including Annex Specifications are subject to change without notice. Customers should verify actual device performance in their specific applications.

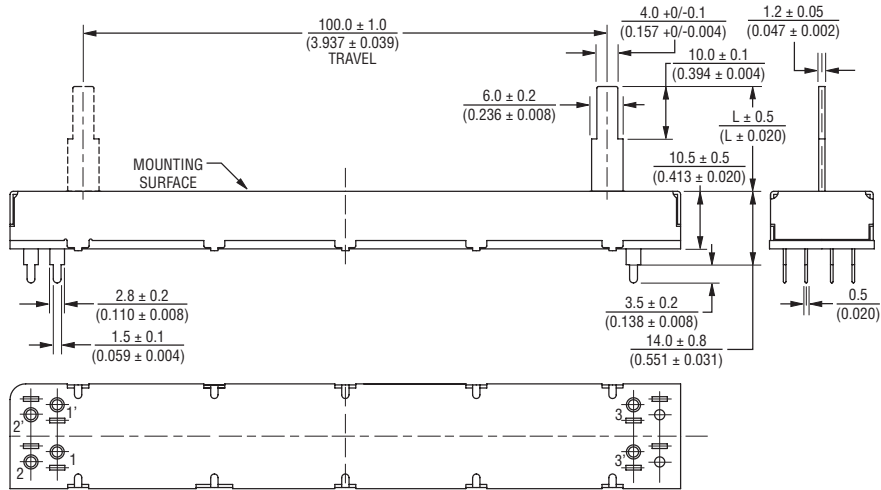


# PTF Series Long Life Slide Potentiometer

**BOURNS®**

## Product Dimensions

100 mm Length of Travel  
Lever End Style "A"



## Mounting Hole Detail



DIMENSIONS:  $\frac{\text{MM}}{\text{(INCHES)}}$

# PTF Series Long Life Slide Potentiometer

**BOURNS®**

## Product Dimensions

45 mm Length of Travel  
Lever End Style "T"



# PTF Series Long Life Slide Potentiometer

**BOURNS®**

## Product Dimensions

60 mm Length of Travel  
Lever End Style "T"



Specifications are subject to change without notice.  
Customers should verify actual device performance in their specific applications.

# PTF Series Long Life Slide Potentiometer

**BOURNS®**

## Product Dimensions

100 mm Length of Travel  
Lever End Style "T"



DIMENSIONS:  $\frac{MM}{(INCHES)}$

# PTF Series Long Life Slide Potentiometer

**BOURNS®**

## Lever End Styles



LEVER END STYLE "A"



LEVER END STYLE "B"



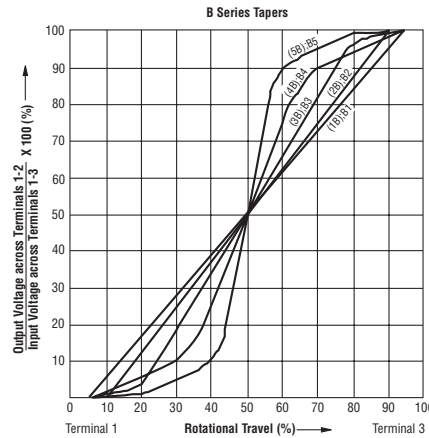
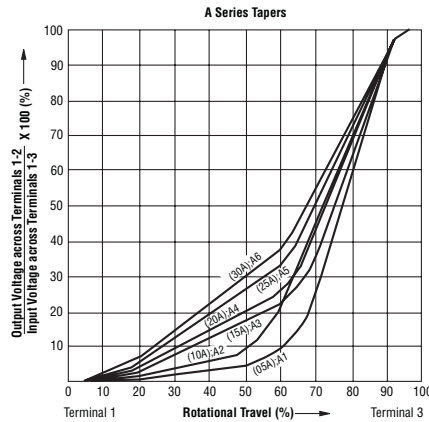
LEVER END STYLE "T"

### Lever Length (A & B Lever Only)

15.0  
(.591)

20.0  
(.787)

## Tapers



## Standard Resistance Table

| Resistance (Ohms) | Resistance Code |
|-------------------|-----------------|
| 1,000             | 102             |
| 2,000             | 202             |
| 5,000             | 502             |
| 10,000            | 103             |
| 20,000            | 203             |
| 50,000            | 503             |
| 100,000           | 104             |
| 200,000           | 204             |
| 500,000           | 504             |
| 1,000,000         | 105             |

## How To Order

**PTF 45 - 15 2 A - 103 B2**

Model Number  
 Designator  
 PTF = Long Life Slide Potentiometer  
 Length of Travel  
 45 = 45 mm  
 60 = 60 mm  
 01 = 100 mm  
 Lever Length  
 08 = 8.2 mm ("T" Lever Only)  
 15 = 15 mm ("A" & "B" Lever Only)  
 20 = 20 mm ("A" & "B" Lever Only)  
 No. of Gangs  
 1 = Single Gang with PC Pins  
 2 = Dual Gang with PC Pins  
 3 = Single Gang with Solder Lugs  
 4 = Dual Gang with Solder Lugs  
 Lever End Style  
 A = Metal Lever (Refer to Drawing)  
 B = Metal Lever (Refer to Drawing)  
 T = Metal Lever (Refer to Drawing)  
 Resistance Code  
 (See Standard Resistance Table)  
 Resistance Taper (See Taper Charts)  
 Taper Series followed by Curve Number