

5

4

3

2

1

DRAWING NO.
19-1702-CUST

REVISIONS

01	OFFICIAL RELEASE				2009.09.1
	08-05-09	W	Y	T	H

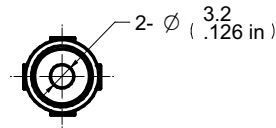
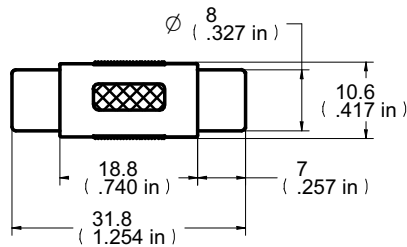
Betty 5:14:08:50
+0800



Description: RCA Female Inline Adaptor
 Part No: 19-1702
 Application: Adapter
 Crimp Tool: N/A
 Impedance: N/A
 Frequency Range: N/A
 Material: Body Brass Nickel Plated
 Shell PVC Black
 Insulation Bakelite Yellow
 RoHS Compliance: Yes
 Technical Detail: N/A

受控 CONTROLLED DOCUMENT

编号 P/N	19-1702-CUST	版本 Rev	01	日期 Rel'd Date	SEP 19,09
-----------	--------------	-----------	----	------------------	-----------



DIM OUTLINE

CUSTOMER COPY

TOLERANCE UNLESS OTHERWISE SPECIFIED		DRAWN BY IVON.W	DATE 08-05-09
DECIMALS	mm	CHECKED BY BETTY.YU	DATE 08-05-09
X	± 0.5	APPROVED BY THOMAS	DATE 08-05-09
X.X	± 0.3	U/M	mm
X.XX	± 0.1		
ANGLES	± 0.5°		



TITLE
RCA FEMALE INLINE ADAPTOR

SHEET 1 OF 1	DRAWING NO. 19-1702-CUST	SIZE A
-----------------	-----------------------------	-----------

THIS DRAWING WAS PRODUCED BY COMPUTER,
DO NOT SCALE DRAWING OR UPDATE MANUALLY.

5

4

3

2

1