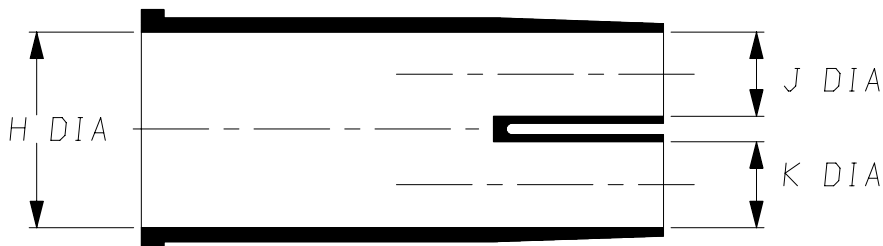
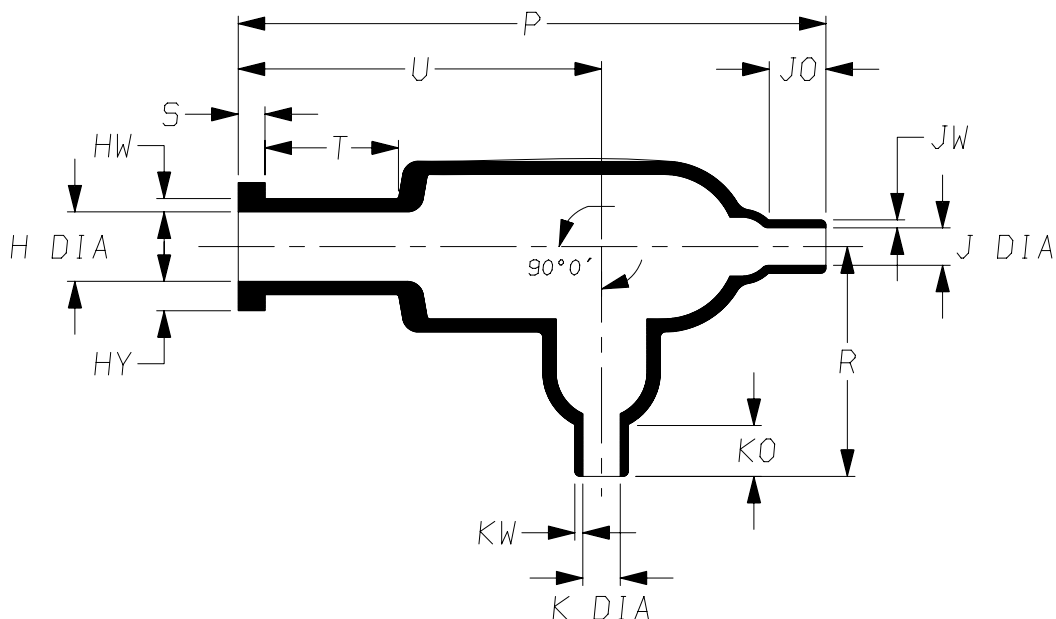


a) Part as supplied.

322W214



b) Part after unrestricted recovery.



DIMENSIONS in millimetres  
(in inches, for reference)

	H		J		K		P	R	S	T	U	HY	HW	JO	JW	KO	KW
Part	MIN	MAX	MIN	MAX	MIN	MAX	±10%	±10%	±10%	±10%	±10%	±10%	±20%	±20%	±20%	±20%	±20%
Number	a	b	a	b	a	b	b	b	b	b	b	b	b	b	b	b	b
322W214	40 {1.57}	13.7 {0.54}	24 {0.94}	7.4 {0.29}	24 {0.94}	7.4 {0.29}	110 {4.33}	43 {1.69}	5.0 {0.20}	25 {0.98}	68 {2.68}	5.5 {0.22}	2.5 {0.10}	11 {0.43}	2.0 {0.08}	11 {0.43}	2.0 {0.08}

Copyright (!)

The copyright in this drawing is the property of Tyco Electronics UK Ltd. The drawing is issued on the condition that it is not copied, reproduced or disclosed to a third party, either in whole or in part without the prior written consent of Tyco Electronics UK Ltd.

Drawn A.LILLEY. Checked

Issue 2

Date May 2008

Conforms to ISO Recommendations

3rd Angle Projection

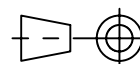
Not to Scale

Approval

Design

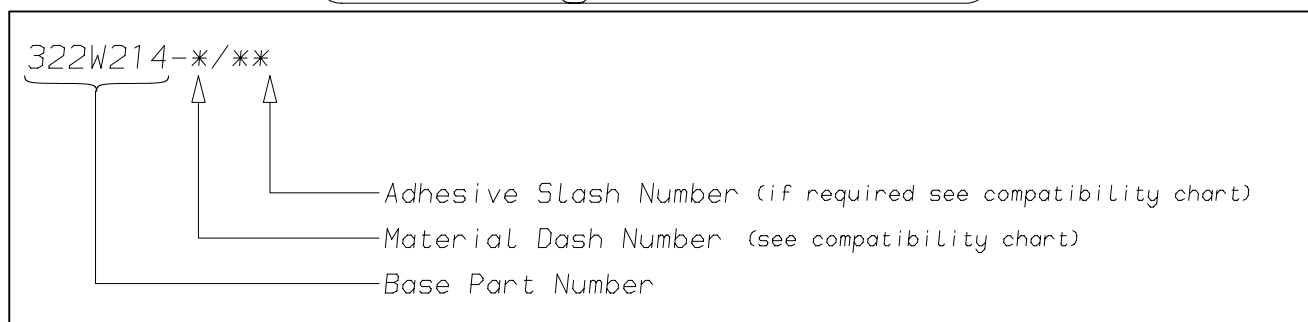
MKTG.

Tech.



<b>Raychem</b>		<b>Specification Control Drawing</b>	Part Number <b>322W214</b> Issue 2
Iss.	Date	E.C.R. No.	Details of Change
2	May 2008	CR08-HM-011	Jo & Ko toll was 10%, JW & KW was 1.5

## Ordering Information



## COMPATIBILITY CHART

Material Dash Number	Material Description	SPEC Number	Coating Slash Number
-3	POLYOLEFIN, SEMI-RIGID	RT-301	/42, /86, /180
-4	POLYOLEFIN, FLEXIBLE	RT-1304	/42, /86, /180
-25	ELASTOMER, FLUID RESISTANT	RW-2070	/42, /86, /225
-130	POLYOLEFIN, COMMERCIAL FLEXIBLE	RW-2008	/42

## NOTES

- ① As supplied dimensions are for uncoated parts, when coating is added entry diameters will reduce by 1.5mm Max.

Tyco Electronics UK Ltd. Faraday Road, Swindon, Wiltshire, SN3 5HH England Telephone: (01793) 528171 Fax: 572516	Tyco Electronics Corporation 300, Constitution Drive, Menlo Park, CA 94025 USA Telephone (650) 361-3860 Fax: (650) 361-5579
Cage Code K1010	Cage Code 06090