

LISA-R1 miniature lens for Luxeon Rebel LEDs



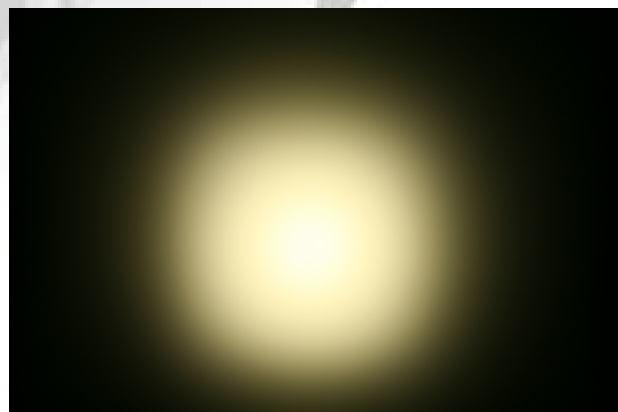
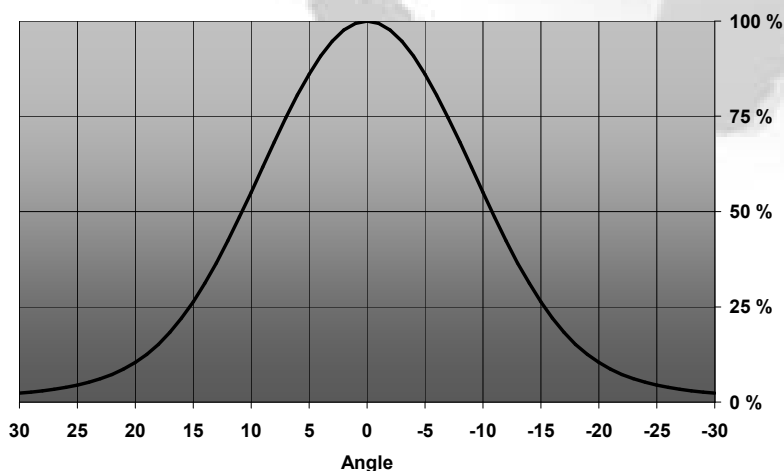
- Lens material optical grade PMMA with high UV and temperature resistance (105°C/220°F). Lens holder molded of high quality white ABS.
- High optical efficiency, up to 90%
- Integrated holder. Fastening of holden to PCB with appropriate adhesive, e.c. epoxy or polyurethane based. NOTE: DO NOT USE SUPERGLUE.
- Very small and compact dimensions: Diameter 10.5 mm, height 7 mm

LENS TYPES

NAME	ORDERING CODE	FWHM Angle
LISA-R1 smooth spot	CA10544_Lisa-R1-SS	±10.8°

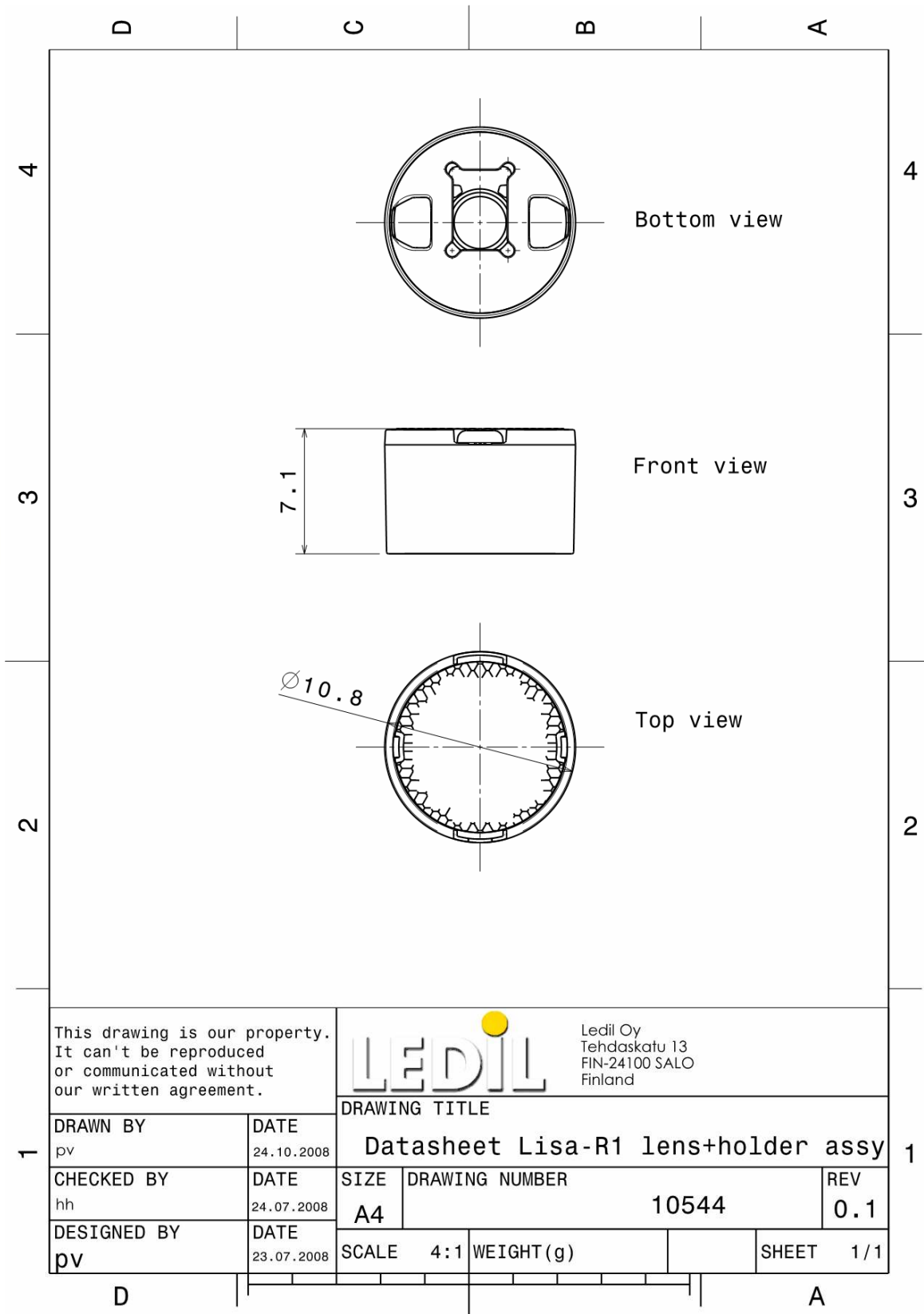
MEASUREMENT DATA & PHOTOGRAPHS

Relative Intensity of Lisa-R1-SS



© Ledil Oy – PRELIMINARY - Subject to change without prior notice

DRAWINGS



© Ledil Oy - PRELIMINARY - Subject to change without prior notice