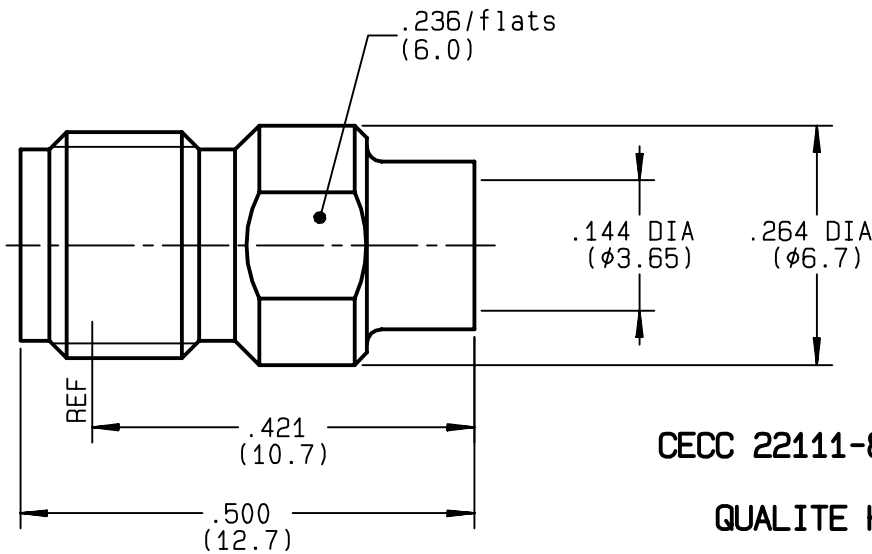


**STRAIGHT JACK SOLDER TYPE
CABLE .141**

R125.225.000
SERIES SMA



CECC 22111-804-01

QUALITE H 50 Ω



NOMINAL IMPEDANCE	50 Ω
FREQUENCY RANGE	0-18 GHz
TEMPERATURE RATING	-65/+105 °C
V.S.W.R	1.05 + .008 x F(GHz)Maxi
RF INSERTION LOSS	0.03 √F(GHz) dB Maxi
VOLTAGE RATING	500 Veff Maxi
DIELECTRIC WITHSTANDING VOLTAGE	1000 Veff Mini
INSULATION RESISTANCE	5000 MΩMini
HERMETIC SEAL	NA Atm.cm ³ /s
LEAKAGE (pressurized only)	NA
MECHANICAL DURABILITY	500 Cycles
WEIGHT	1.6 gr
SPECIFICATION	4051 571

CABLES : **KS 2**
RG 402

OTHERS CHARACTERISTICS

	nach E 2330-023
CABLE RETENTION	270 N Mini
CENTER CONTACT RETENTION	
Axial force - mating end	NA N Mini
Axial force - opposite end	NA N Mini
Torque	NA cm.N Mini
RECOMMENDED TORQUES	
Mating	NA cm.N
Panel nut	NA cm.N
Clamp nut	NA cm.N

CONNECTOR PARTS	MATERIALS	FINISH
BODY	STAINLESS STEEL	GOLD 0.5 OVER NICKEL 2
OUTER CONTACT		
CENTER CONTACT	BERYLLIUM COPPER	GOLD 1.3 OVER NICKEL 2
INSULATOR	PTFE	-
GASKET		-
OTHERS PIECES		

(all values are given in micrometers)

GUILLOMIN

ISSUE	CREATION DATE	FILE PART-NUMBER
9901L00	21/10/1986	



RADIALL®

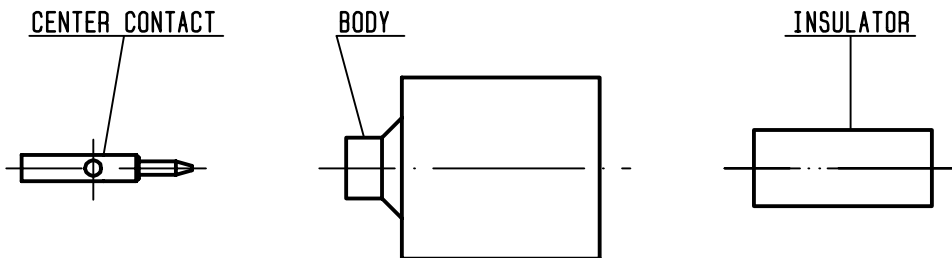
The information given here is subject to change without notice.
Design changes may be in order to improve the product .

Connect to the future



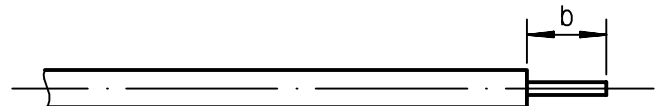
R125.225.000

ISSUE **9901L00** SERIES **SMA**



①

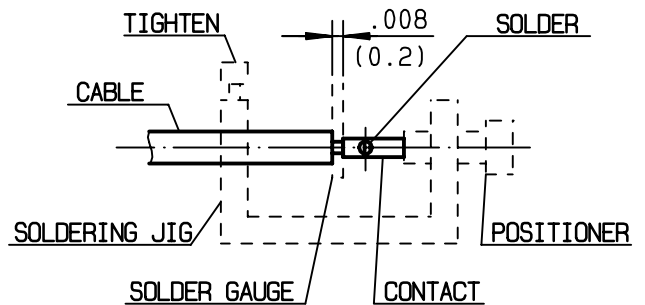
Strip the dielectric of the cable with stripping tool R 282 053 000.
 Trimmer : R 282 067 000
 Clean the cable.



Stripping	a	b	c	d	e
inch	0.125	0	0	0	0
mm	3.17				

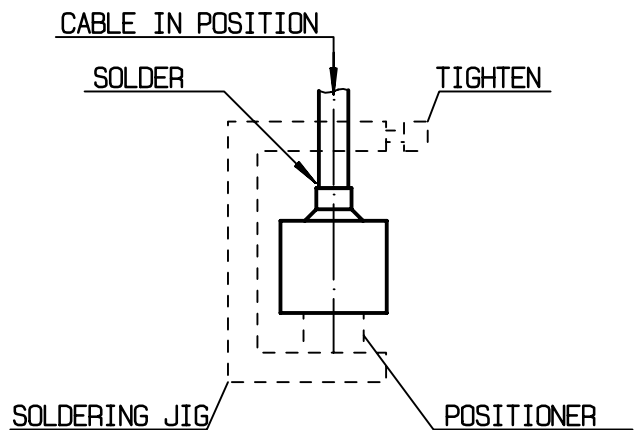
②

Screw the positioner R 282 744 220 onto the soldering jig R 282 740 000.
 Slide contact into positioner.
 Insert solder gauge R 282 862 060 (62) between contact and cable.
 Tighten and solder the contact .



③

After cooling remove cable assembly from the jig.
 Screw positioner R 282 744 011 (86) into the connector.
 Slide cable into the connector until it bottoms against positioner then tighten.
 Put 3 rings of solder around the cable and solder.



④

After cooling remove cable assembly from the jig.
 Cut the dielectric with dielectric recess gauge R 282 914 010 + R 282 915 010.
 Screw female dielectric insert tool onto connector and insert insulator with the dielectric plunger R 282 730 043.

