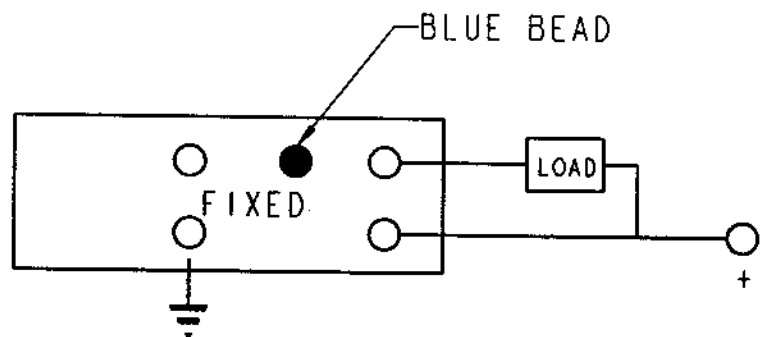
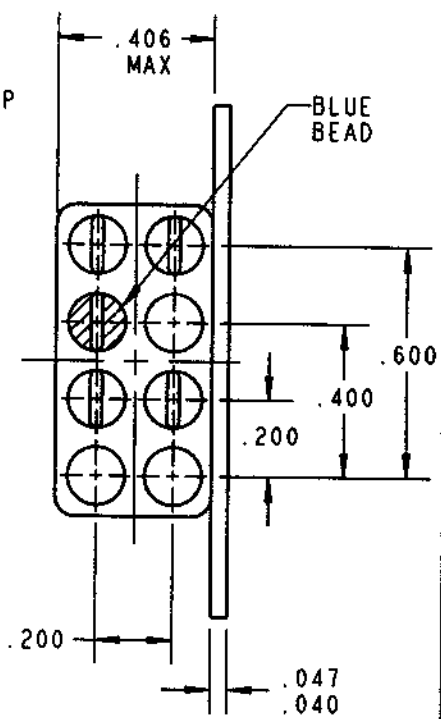
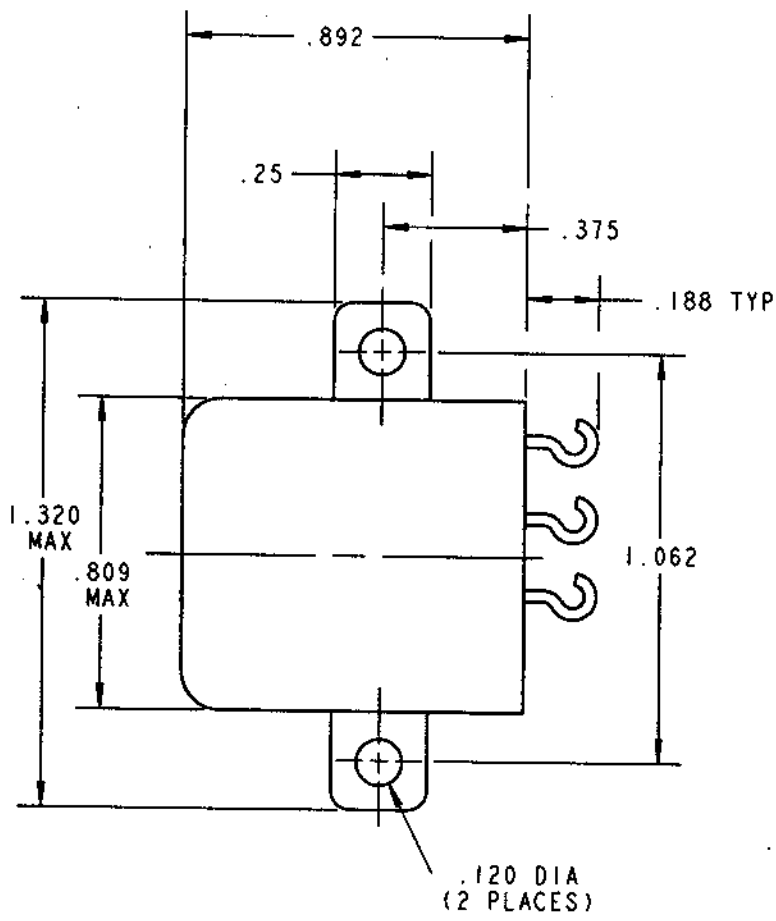
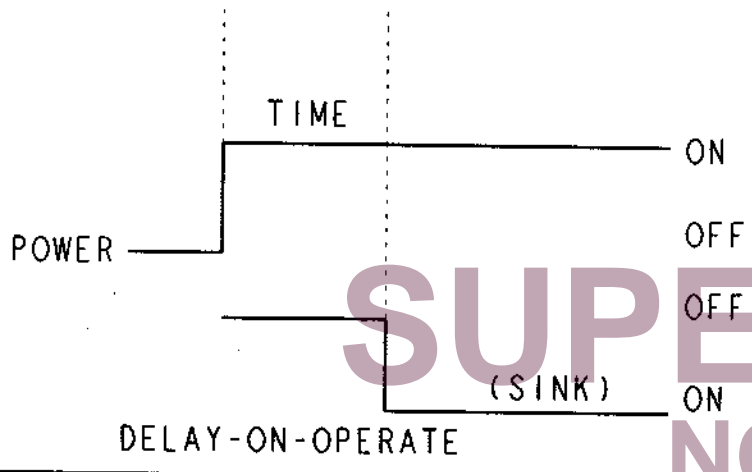


SH	1	OF	2
NO.	REVISION		
0	FIRST RELEASE DCO 150639		
1	SEE DCO 150641 FOR REV'S, CHG. BY BD 1/24/02		



WIRING DIAGRAM



CUSTOMER DATA SHEET

DRWN. ASB 01/21/02    APPL. <sup>TLS</sup> 01-24-02  
ENG.

**CII Technologies**  
advanced control electronic solutions

1821-1B-1203

**SUPERSONIC**  
NOT the LATEST  
REVISION

1.0 DESCRIPTION: THIS DATA SHEET ESTABLISHES THE REQUIREMENTS FOR A TIME DELAY RELAY, DELAY ON OPERATE, FIXED SOLID STATE OUTPUT.

2.0 APPLICABLE DOCUMENTS

2.1 MIL-R-83726 ENVIRONMENT

2.2 MIL-STD-202, TEST METHODS FOR ELECTRICAL AND ELECTRONIC COMPONENTS.

3.0 ELECTRICAL SPECIFICATIONS:

3.1 TIMING: 120 SECOND DELAY "ON" OPERATE AFTER THE APPLICATION OF POWER

3.2 TOLERANCE:  $\pm 10\%$

3.3 REPEATIBILITY:  $\pm 0.1\%$

3.4 RECYCLED TIME: 10 MS

3.5 RECOVERY TIME: 20 MS

3.6 INPUT VOLTAGE: 18-31 VDC

3.7 CONTACT CONFIGURATION: SINGLE-POLE, SINGLE THROW NORMALLY-OPEN SPSTNO SOLID STATE CLOSURE TO GROUND

3.8 CONTACT LOAD RATING: 0.3A @ 25°C, 0.1A @ 125°C, 30 VDC RESISTIVE

3.9 CURRENT DRAIN: 10 ma, PLUS LOAD CURRENT

4.0 ENVIRONMENTAL SPECIFICATIONS

4.1 INSULATION RESISTANCE: 1000 MEGOHM AT 500 VDC

4.2 DIELECTRIC STRENGTH: 500 VRMS BETWEEN TERMINALS AND CASE

4.3 TEMPERATURE: OPERATING -55°C TO +125°C

4.4 VIBRATION: 20G PER MIL-STD-202 METHOD 204, COND. A, 10 HZ TO 2000 HZ

4.5 SHOCK: 50G HALF SINE, 11 MSEC DURATOIN

4.6 SEALING: HERMETICALLY SEALED TO 1.3 INCHES MERCURY

5.0 PHYSICAL CHARACTERISTICS

5.1 TERMINAL FINISH: TIN-LEAD PLATING

5.2 WEIGHT: 1 OZ. MAX.

5.3 OUTLINE AND MOUNTING DIMENSIONS: SEE FIGURE 1

6.0 MARKING: MARKING SHALL INCLUDE THE FOLLOWING INFORMATION

DEVICE NOMENCLATURE: TIMING MODULE

OPERATING VOLTAGE RANGE

CII PART NUMBER

CII CAGE CODE

CIRCUIT DIAGRAM

DATE CODE

CUSTOMER DATA SHEET

DRWN.	ASB 01/21/02	APPL. ENG.	TIG 01-24-02
-------	--------------	------------	--------------



1821-1B-1203