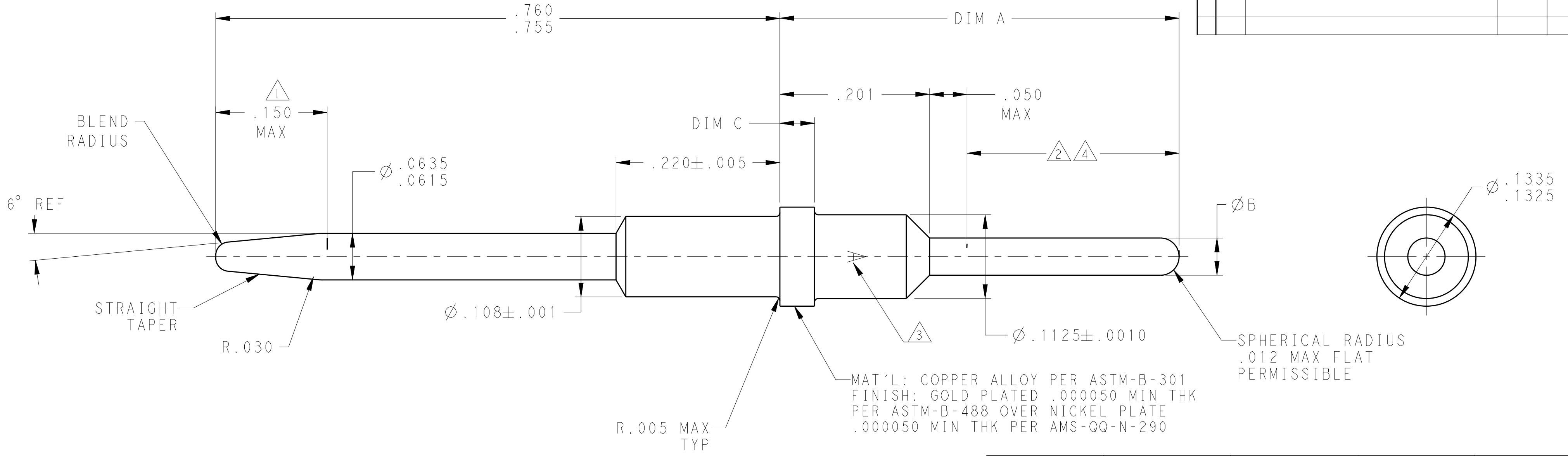


THIS DRAWING IS UNPUBLISHED. RELEASED FOR PUBLICATION  
 © COPYRIGHT - BY - ALL RIGHTS RESERVED.

LOC	DIST	REVISIONS			
P	LTR	DESCRIPTION	DATE	DWN	APVD
	W	REV PER ECO 13-009837	6-13-13	CT	DM



MAT'L: COPPER ALLOY PER ASTM-B-301  
 FINISH: GOLD PLATED .000050 MIN THK  
 PER ASTM-B-488 OVER NICKEL PLATE  
 .000050 MIN THK PER AMS-QQ-N-290

--	.0445-.0485	.048-.052	.776	4-448139-3
2 4	.044-.048	.059 MAX	.701	4-448139-0
2	.044-.048	.059 MAX	.701	3-448139-9
--	.044-.048	.048-.052	.701±.005	3-448139-8
2	.044-.048	.059 MAX	.617±.005	3-448139-5
2 4	.044-.048	.059 MAX	.617±.005	3-448139-4
2	.0445-.0485	.048-.052	.606	3-448139-3
--	.0445-.0485	.059 MAX	.826±.005	3-448139-0
2	.0445-.0485	.048-.052	.826±.005	2-448139-9
--	.0445-.0485	.048-.052	.576	2-448139-5
2	.0445-.0485	.059 MAX	.651	2-448139-2
--	.044-.048	.048-.052	.468±.005	2-448139-1
2	.044-.048	.048-.052	.617±.005	1-448139-8
2	.0445-.0485	.059 MAX	.536±.005	1-448139-5
--	.044-.048	.048-.052	.505±.005	1-448139-4
--	.0445-.0485	.048-.052	.536	1-448139-1
--	.0445-.0485	.0615-.0630	.415	448139-8
--	.0445-.0485	.048-.052	.651	448139-6
--	.0445-.0485	.048-.052	.536	448139-3
REMARKS	DIM C	DIM B	DIM A	PART NO.

- 1 ELECTRICAL ENGAGEMENT POINT.
- 2 THIS AREA SOLDER DIPPED.
- 3 MANUFACTURERS LOGO; LACATION & ORIENTATION OPTIONAL.
- 4 SOLDER IS RoHS-COMPLIANT Sn.

THIS DRAWING IS A CONTROLLED DOCUMENT.

DWN C.C. THOMAS 27OCT2009	TE Connectivity
CHK K. THACKSTON 27OCT2009	
APVD K. THACKSTON 27OCT2009	
PRODUCT SPEC	
MATERIAL SEE TABLE	NAME POSTED PIN CONTACT, SIZE 16, ARINC 600
TOLERANCES UNLESS OTHERWISE SPECIFIED: 0 PLC ± 1 PLC ± 2 PLC ± 3 PLC ±.010 4 PLC ± ANGLES ± FINISH	APPLICATION SPEC
SEE TABLE	SIZE A200779
SEE CALLOUTS	DRAWING NO C-448139
CUSTOMER DRAWING	RESTRICTED TO
	SCALE 10:1
	SHEET 1 OF 1
	REV W