

C. W. Weston	8-27-90
DESCRIPTION	APP'D./DATE
REV	REV

SAFETY ORGANIZATION(S):

THIS FILTER HAS BEEN FORMALLY RECOGNIZED, CERTIFIED OR APPROVED BY THE LISTED AGENCY. THEREFORE, ALL TEST/REQUIREMENTS SPECIFIED IN THE LATEST REVISION OF THE FOLLOWING AGENCY STANDARDS HAVE BEEN MET.

- UL 1283
- CSA 22.2 NO. 0, 0.4, 8
- 20 OR 30 AMP, 250VAC PHASE TO NEUTRAL/GND
- 20 OR 30 AMP, 440VAC PHASE TO PHASE
- 50-60Hz
- 1.4 ma @ 120 V 60 Hz
- 3.4 ma @ 250 V 50 Hz
- 10°C TO +40°C @ RATED CURRENT, I_r

$$I_o = I_r \sqrt{\frac{85 - T_o}{45}}$$

-25°C to +85°C
21 DAYS @ 40°C 95% RH

RELIABILITY SPECIFICATIONS:

STORAGE TEMPERATURE:
HUMIDITY:

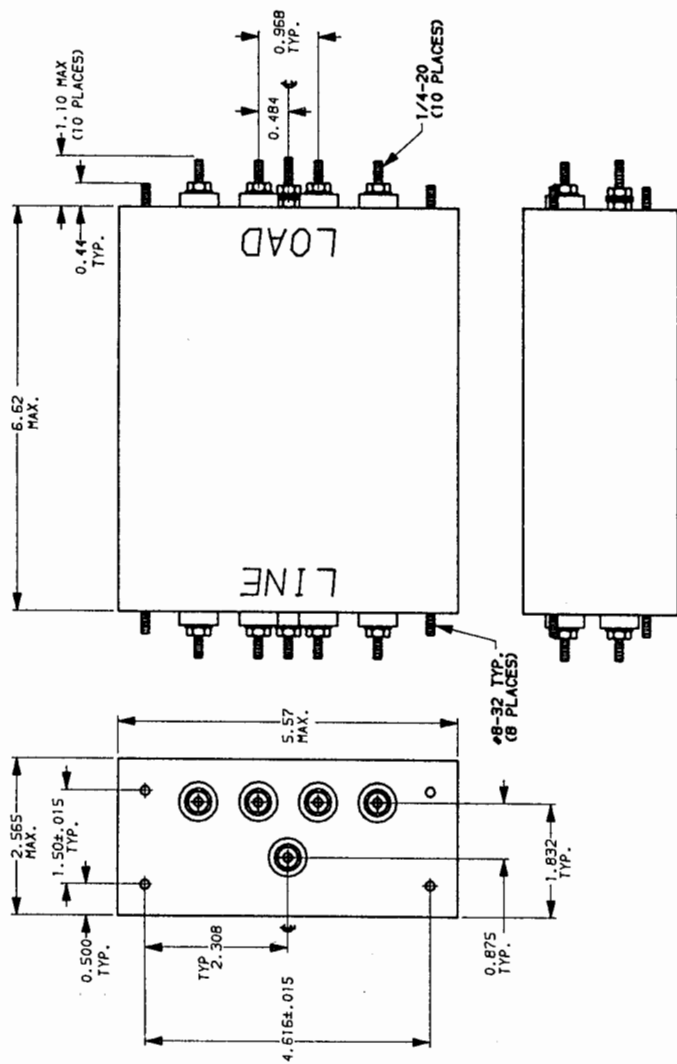
TEST SPECIFICATIONS:

- INDUCTANCE: 20A = 4.44mH NOMINAL 30A = 1.97 mH NOMINAL
- CAPACITANCE: (MEASURED @ 1 KHZ, 0.25 VAC MAX., 25°C ±1°C)
- PHASE/NEUTRAL TO GROUND: .018uF ±20%
- PHASE TO NEUTRAL: 3.29uF ±20%
- DISCHARGE RESISTOR: 110 KΩ
- PHASE/NEUTRAL TO GROUND AND PHASE TO PHASE INSULATION RESISTANCE: (W/O DISCHARGE RESISTOR)
- 5000 MΩ (MIN) AT 100 VDC
- 20°C AND 50X RH

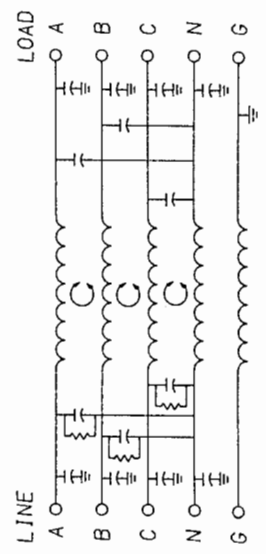
RECOMMENDED RECEIVING INSPECTION HIPOT:

- PHASE TO GROUND 1500 VAC FOR 1 MINUTE
- NEUTRAL TO GROUND 1500 VAC FOR 1 MINUTE
- PHASE TO NEUTRAL 1450 VDC FOR 1 MINUTE
- FILTER APPROVAL:

THE BEST WAY TO SELECT AND QUALIFY A FILTER IS FOR YOUR ENGINEERING TO TEST THE UNIT IN YOUR EQUIPMENT.



NOTE: UNLESS OTHERWISE SPECIFIED, TOLERANCE TO BE ±.045



FREQUENCY MHZ	50Ω - 50n (MINIMUM) INSERTION LOSS				
	.05	.15	.50	1.0	5.0
COMMON	20A	22	39	55	56
dB	30A	15	30	55	55
DIFF.	20A	20	50	65	65
dB	30A	5	14	65	65

This document is proprietary to CORCOM INC. and is not to be reproduced nor used for manufacturing purposes except on CORCOM's order or prior written consent.

TOLERANCE EXCEPT AS NOTED
DECIMAL: .XXX .XX .X ANGLES
ENGLISH: ± 1°
METRIC: ±

MATERIAL: AS SUPPLIED

FINISH:



POWER LINE FILTER

SCALE	DATE	DRG. NO.	REV.
1:2	5-9-88		
BY	ORIGINATOR		
TDL	CW		