



## Main

|   |   |
|---|---|
| Range of product  | OsiSense ATEX D   |
| Pressure sensor type                                    | Electromechanical vacuum-pressure sensor                    |
| Product specific application                            | ATEX D  |
| Pressure sensor name                                    | XMLB  |
| Electrical circuit type                                 | Control circuit   |
| Pressure switch type of operation                       | Regulation between 2 thresholds                             |
| Scale type  | Adjustable differential                                     |
| Pressure sensor size                                    | 72.52 psi (5 bar)   |
| Local display   | With  |
| Fluid connection type                                   | G 1/4 (female) conforming to ISO 228                        |
| Adjustable range of switching point on falling pressure | -14.5...65.27 psi (-1...4.5 bar)                            |
| Adjustable range of switching point on rising pressure  | -7.25...72.52 psi (-0.5...5 bar)                            |
| Possible differential maximum at high setting           | 87.02 psi (6 bar)   |
| Maximum permissible accidental pressure                 | 163.17 psi (11.25 bar)                                      |
| Destruction pressure                                    | 333.59 psi (23 bar)   |
| Pressure actuator                                       | Diaphragm   |
| Controlled fluid  | Air 0...70 °C<br>Hydraulic oil 0...70 °C<br>Water 0...70 °C |
| Materials in contact with fluid                         | Nitrile<br>Stainless steel<br>Zinc alloy                    |
| Enclosure material                                      | Zinc alloy  |

## Complementary

|  |   |
|--|---|
| Maximum permissible pressure - per cycle | 90.65 psi (6.25 bar)                            |
| Cable entry number                       | 1 tapped entry M20 x 1.5 cable gland (included) |
| Terminal block type                      | 4 terminals                                     |
| Repeat accuracy                          | 2 %   |
| Auxiliary contacts operation             | Snap action                                     |
| Contacts material                        | Silver contacts                                 |
| Mechanical durability                    | 3000000 cycles                                  |
| Setting                                  | External  |
| Terminals description ISO n°1            | (13-14-11-12)OF                                 |
| Height                                   | 2.95 in (75 mm)                                 |
| Depth                                    | 1.38 in (35 mm)                                 |
| Width                                    | 4.45 in (113 mm)                                |

## Environment

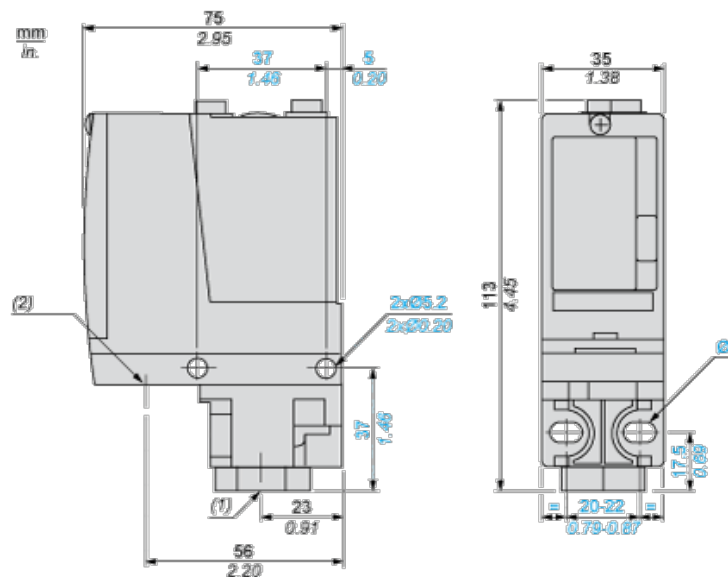
|                                       |   |
|---------------------------------------|---|
| standards                             | EN/IEC 60079-0<br>EN/IEC 60079-31       |
| directives                            | 2014/34/EU - ATEX directive             |
| product certifications                | INERIS 04ATEX0058<br>IEC-Ex IEC 17.0019 |
| marking                               | II2 D-Ex tb IIIC T85°C Db IP66          |
| protective treatment                  | TC                                      |
| ambient air temperature for operation | -4...140 °F (-20...60 °C)               |

|                    |              |
|--------------------|--------------|
| operating position | Any position |
|--------------------|--------------|

## Offer Sustainability

|  |  |
|--|--|
| Not Green Premium product  | Not Green Premium product  |
| Compliant - since 0945 - Schneider Electric declaration of conformity  | Compliant - since 0945 - Schneider Electric declaration of conformity  |
| Reference not containing SVHC above the threshold  | Reference not containing SVHC above the threshold  |
| Need no specific recycling operations  | Need no specific recycling operations  |
| WARNING: This product can expose you to chemicals including:   | WARNING: This product can expose you to chemicals including:   |
| Diisononyl phthalate (DINP), which is known to the State of California to cause cancer, and                                | Diisononyl phthalate (DINP), which is known to the State of California to cause cancer, and                                |
| Di-isodecyl phthalate (DIDP), which is known to the State of California to cause birth defects or other reproductive harm. | Di-isodecyl phthalate (DIDP), which is known to the State of California to cause birth defects or other reproductive harm. |
| For more information go to <a href="http://www.p65warnings.ca.gov">www.p65warnings.ca.gov</a>                              | For more information go to <a href="http://www.p65warnings.ca.gov">www.p65warnings.ca.gov</a>                              |

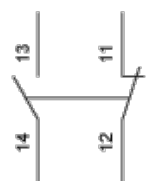
## Dimensions



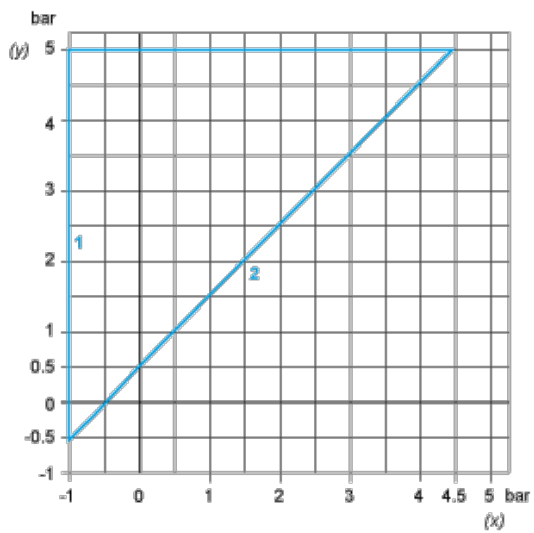
- (1) 1 fluid entry, tapped G1/4 (BSP female)
- (2) 1 electrical connections entry, tapped M20 x 1.5
- Ø : 2 elongated holes Ø 5.2 x 6.7

## Wiring Diagram

### Terminal Model



## Operating Curves

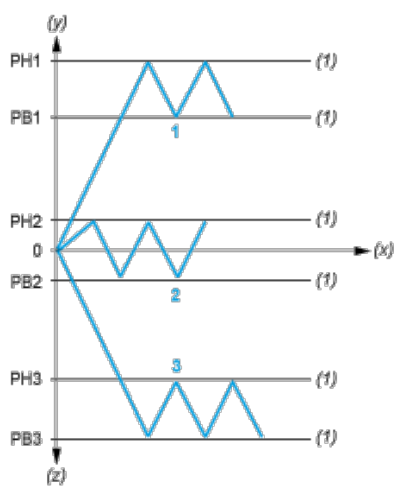


(y) Rising pressure

(x) Falling pressure

1 : Maximum differential

2 : Minimum differential



(y) Pressure

(x) Time

(z) Vacuum

(1) Adjustable value

PH : High point

PB : Below point