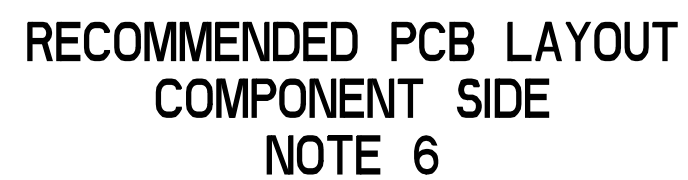


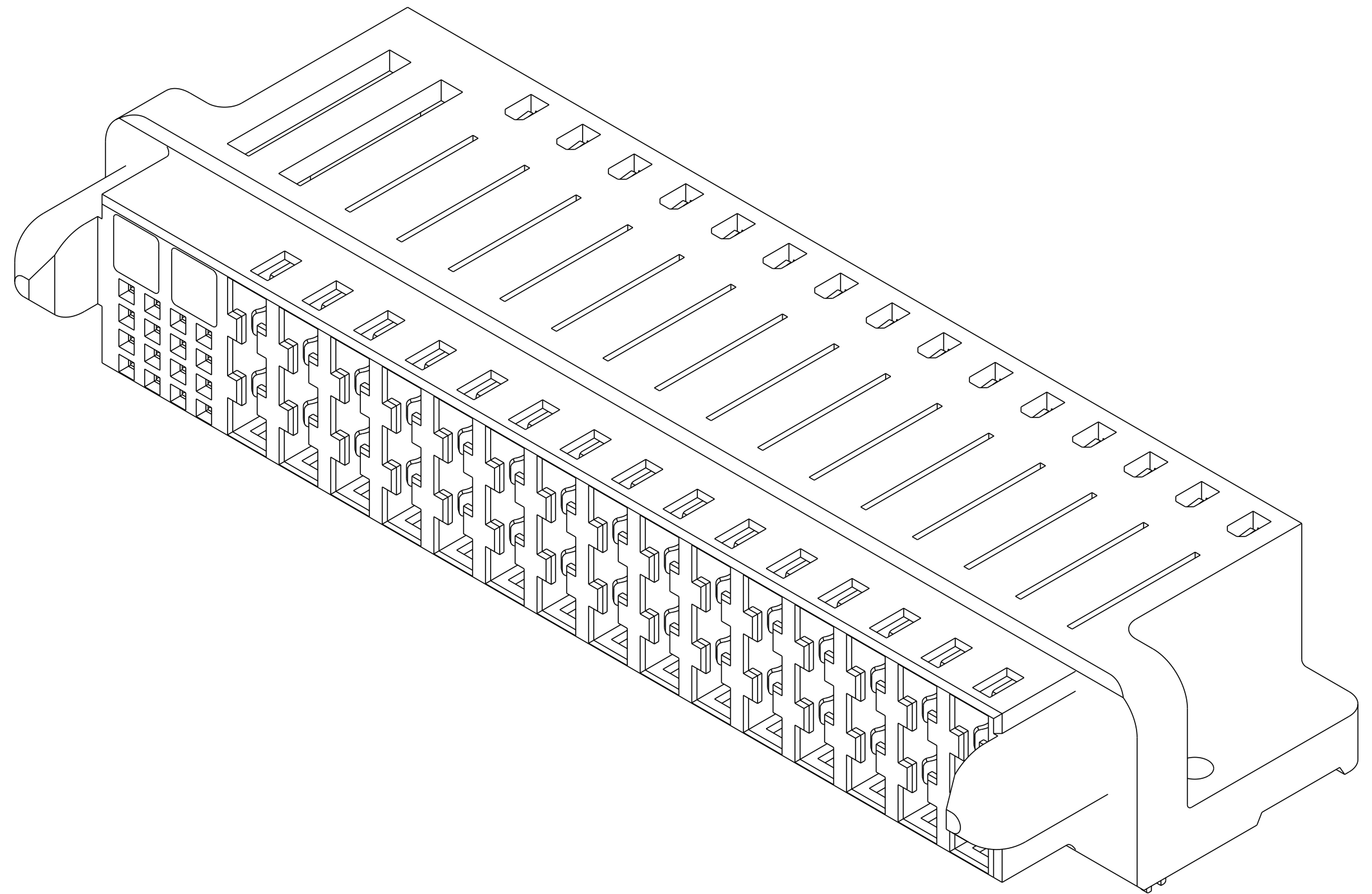
Copyright FCI.  
FCI

spec ref		*		dr		DuWa		2010/04/27		projection		MM		size		A2		scale		1:1			
tolerance std				eng		Helen Zhang		2012/07/23						ecn no				-					
- ASME Y14.5		TOLERANCES UNLESS OTHERWISE SPECIFIED		chr		-		-						rel level		Released							
				appr		Pei-Ming Zheng		2012/07/23						product family									
surface		✓		linear		0.X		±0.5				title		R/A RECPT ASSY 15DC-16S		dwg no		10106031		rev		A	
				0.XX		±0.25		HCI POWER CONNECTOR															
				0.XXX		±0.10																	
ASME Y14.5		angular		0°		±2°		www.fci.com		cat. no.		-		Product - Customer Drw		sheet 1 of 4							

Printed: Jul 23, 2012


	1	2	3	4	5	6	7	8		
A									A	
B	TOP LAYER DESCRIPTION	TABLE 1 (HCI POWER) PLATED THROUGH-HOLE REQUIREMENTS								
		DRILLED HOLE DIAMETER	COPPER THICKNESS	TIN-LEAD THICKNESS	NICKEL THICKNESS	GOLD THICKNESS	TIN THICKNESS	SILVER THICKNESS	FINISHED HOLE DIAMETER	
	TIN-LEAD	0.81-0.86 (0.85 DRILL)	0.025 - 0.050	0.005 - 0.015	--	--	--	--	0.65 - 0.80	
	IMMERSION TIN	0.81-0.86 (0.85 DRILL)	0.025 - 0.050	--	--	--	0.9 - 1.5um	--	0.70 - 0.80	
	IMMERSION SILVER	0.81-0.86 (0.85 DRILL)	0.025 - 0.050	--	--	--	--	0.15 - 0.65um	0.70 - 0.80	
	COPPER (SEE NOTE 9)	0.81-0.86 (0.85 DRILL)	0.025 - 0.050	--	--	--	--	--	0.70 - 0.80	
GOLD	0.81-0.86 (0.85 DRILL)	0.025 - 0.050	--	0.003 - 0.007	FLASH UP TO 0.0002	--	--	0.69 - 0.80		
C	TOP LAYER DESCRIPTION	TABLE 2 (HPC SIGNALS) PLATED THROUGH-HOLE REQUIREMENTS								
		DRILLED HOLE DIAMETER	COPPER THICKNESS	TIN-LEAD THICKNESS	FINISHED HOLE DIAMETER					
TIN-LEAD	1.125-1.175 (Ø.0453±.0010)	0.025-0.050	0.005 - 0.015	0.94 - 1.10 (Ø.040±.003)						
D									D	
E									E	
F	<div>FCI</div> <div>Copyright FCI.</div>		spec ref *		dr DuWa	2010/04/27	projection	MM	size A2	scale 1:1
			tolerance std	TOLERANCES UNLESS OTHERWISE SPECIFIED	eng Helen Zhang	2012/07/23			ecn no -	
			-		chr -	product family -				rel level Released
			ASME Y14.5		appr Pei-Ming Zheng					
			surface	linear	0.X	±0.5	FCI	title R/A RECPT ASSY 15DC-16S HCI POWER CONNECTOR	dwg no 10106031	rev A
			ASME Y14.5		0.XX	±0.25				
					0.XXX	±0.10				
	angular	0°	±2°	www.fci.com	cat. no. -	Product - Customer Drw	sheet 3 of 4			
			PDS: Rev :A		STATUS:Released		Printed: Jul 23, 2012			

1		2		3		4		5		6		7		8	
PART NUMBER	RETENTION CLIPS	#4 SCREW	DIM A (TAIL LENGHT)	TAIL TYPE											
10106031-001LF	NO	YES	3.43	SOLDER TAIL											
10106031-002LF	NO	YES	4.70	SOLDER TAIL											
10106031-003LF	YES	NO	3.43	SOLDER TAIL											
10106031-004LF	YES	NO	4.70	SOLDER TAIL											



NOTES:

1. CONNECTOR MATERIALS:  
HOUSING: HIGH TEMPERATURE THERMOPLASTIC, BLACK  
UL 94V-0 COMPLIANT  
CONTACTS: HIGH PERFORMANCE COPPER ALLOY
2. CONTACT FINISH (REF. GS-12-380 SECTION 5.2)
3. PRODUCT SPECIFICATION: GS-12-380.
4. APPLICATION SPECIFICATION: GS-20-070.
5. PRODUCT MARKING (PRODUCT NUMBER & DATE CODE) ON HOUSING IN AREA SHOWN.
6. MINIMUM NOMINAL PCB THICKNESS: 1.6mm
7. PACKAGING MEETS FCI SPECIFICATION GS-14-1073.
8. HOUSING COMPONENT WILL WITHSTAND EXPOSURE TO 260°C  
PEAK TEMPERATURE FOR 60 SECONDS IN A CONVECTION, INFRA-RED,  
OR VAPOR PHASE REFLOW OVEN.
9. COPPER PLATING THICKNESS IN CENTER OF VIA-HOLE CAN BE  
NO MORE THAN 0.003 LESS THAN OTHER AREAS.
10. ALL HOLE SIZES ARE FINISHED HOLE SIZES.
11. MOUNTING HOLES ARE UNPLATED.

spec ref *		dr DuWa 2010/04/27		projection		size A2		scale 1:1	
tolerance std - ASME Y14.5		TOLERANCES UNLESS OTHERWISE SPECIFIED		eng Helen Zhang 2012/07/23		MM		ecn no -	
		chr - -		prj - -		product family		rel level Released	
surface 		linear		FCI		title R/A RECPT ASSY 15DC-16S		dwg no 10106031	
		0.X ±0.5							
		0.XX ±0.25							
		0.XXX ±0.10							
ASME Y14.5		angular 0° ±2°		www.fci.com		cat. no. -		Product- Customer Drw	
								sheet 4 of 4	