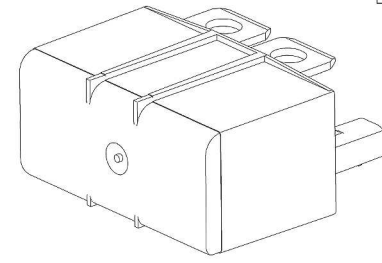
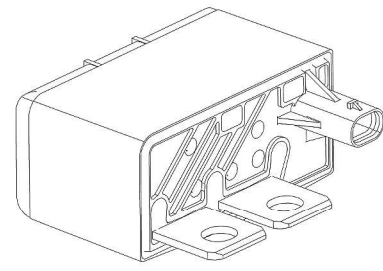
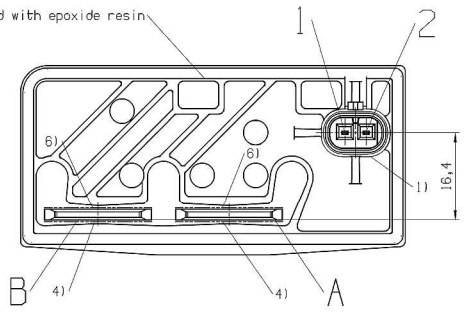
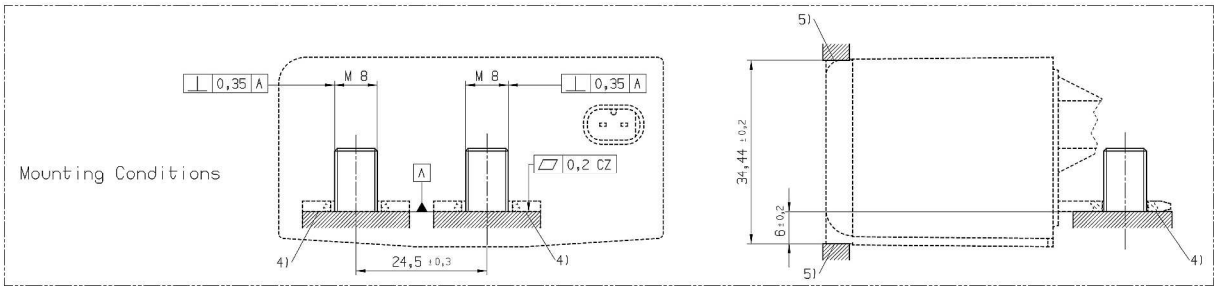


PART	MATERIAL	COLOUR	PLATING
COVER	PA 66 GF25	Ultramarine Blue	
BASE	PA 66 GF25	Black	
COIL TERMINAL 1 and 2	CuSn		Sn
LOAD TERMINAL A and B	Cu		Sn

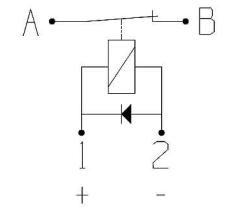
Glued with epoxide resin



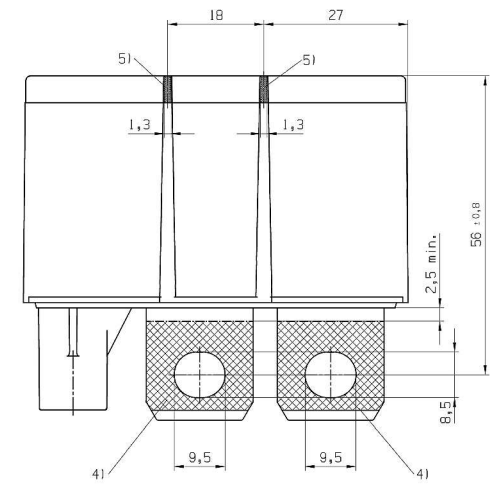
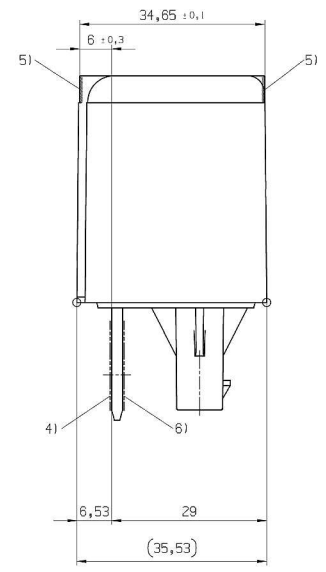
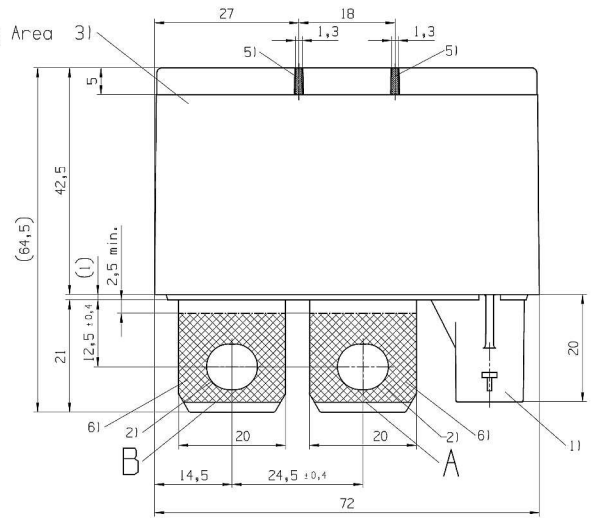
CHANGE REV. A1:
 Drafting error clarification
 CHANGES REV. A1:
 Initial Release Engineering status changed from PRELIMINARY to RELEASE.
 CHANGES REV. 711:
 Correcting 21,4 mm stroke to 20 mm stroke (instead of 20,8 mm) / TE error 2008-11-25.
 See change of dimension 24 to 18 in Field B.
 See change of dimension 24 to 18 in Field B10.
 REVISIONS 51 up to 70 have not been order/boxed.
 Drawing created with REV. 51
 similar to V23230-D2001-001 REV02_04



Pin Assignment



Marking Area



- 1) Connector AMP MCP1.2, 2pos. Keying B, appropriate for TE part no. 2-1670916-1
- 2) Permitted Torque: 16,5 Nm max.
- 3) Labelling with following information:
 - TE-Logo and -part number
 - Nominal Voltage
 - Date Code (Day-Month-Year)
 - Circuit Diagram
- 4) Seating Area on Leadframe
- 5) Seating Area in Fusebox
- 6) Contact area for cable lugs. Recommended cable lug: Tubular Cable Lug 50mm², part-no. 16225, supplier: WEITKOWITZ

(...): Auxiliary Dimension

TE PN		PART NUMBER	
I-1414995-0		V23230-D2001-B200	
PROPRIETARY	THE REPRODUCTION, TRANSMISSION OR USE OF THIS DOCUMENT OR ITS CONTENTS IS NOT PERMITTED WITHOUT EXPRESSED WRITTEN AUTHORITY. OFFENSES WILL BE LITIGATED FOR ALL DAMAGES, ALL RIGHTS, INCLUDING RIGHTS CREATED BY REGISTERED PATENTS GRANTED FOR A UTILITY MODEL OF DESIGN, ARE RESERVED.	CHANGES TO THIS DRAWING MUST BE DONE ONLY IN CAD	PAPER SIZE A1
APPLICABLE SPEC.:		FINISH	
		DIMENSIONS APPLY	
		SCALE	WEIGHT ca. 230g
		MATERIAL	
		PART NAME	
		HCR 200 N/C 12V	
		PART NO.	
		V23230-D2001-B200	
		SHT. 1 OF 1	
REV. CHANGE ORDER	DATE	APP.	CUSTOMER DRAWING