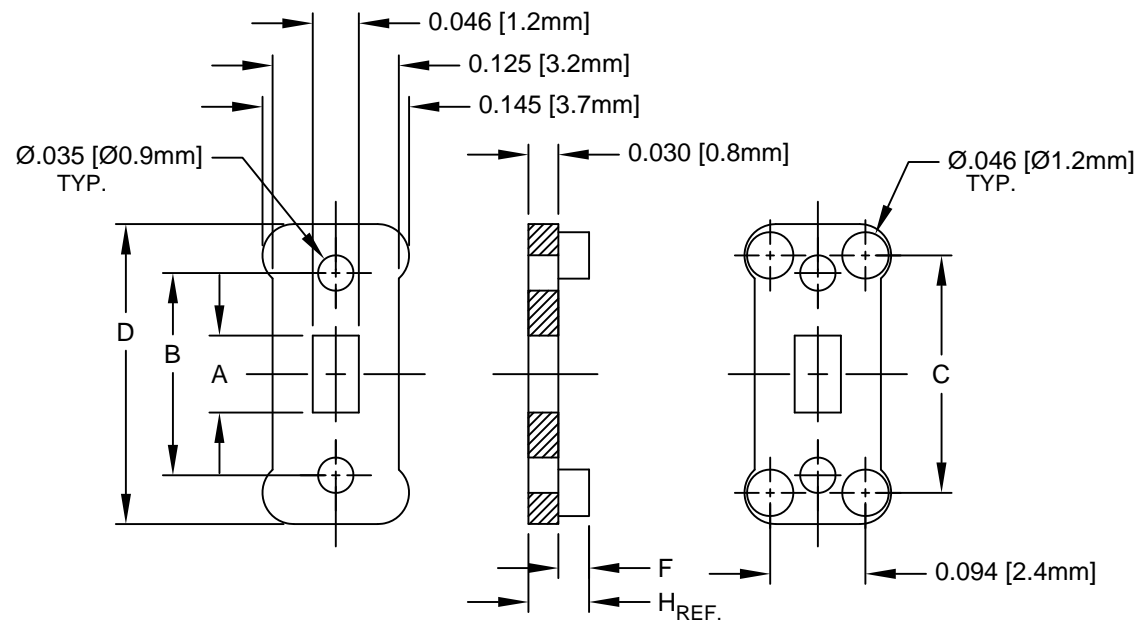



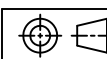
REV.	DESCRIPTION	DATE	APPROVED
C	Engineering Update w/o Changes	02/17/04	M. C.
D	Engineering Table Update	08/27/04	M. C.
E	Corrected Typos on "F" Dimension	03/06/07	M. C.
F	Removed Part Numbers from Table	07/17/14	J. C.
G	Removed Material Code	05/22/16	J. C.



330 SERIES	A	B	C	D	F	H
330-200					.000	.030 (.76)
331-200	.076 (1.9)	.200 (5.1)	.235 (6.0)	.297 (7.5)	.030 (.76)	.060 (1.5)
332-200					.060 (1.5)	.090 (2.3)
337-300	.176 (4.5)	.300 (7.6)	.335 (8.5)	.397 (10.1)	.060 (1.5)	.090 (2.3)
340-400					.000	.030 (.76)
341-400	.276 (7.0)	.400 (10.2)	.435 (11.0)	.497 (12.6)	.030 (.76)	.060 (1.5)
342-400					.060 (1.5)	.090 (2.3)
345-500					.000	.030 (.76)
346-500	.376 (9.6)	.500 (12.7)	.535 (13.6)	.597 (15.2)	.030 (.76)	.060 (1.5)
347-500					.060 (1.5)	.090 (2.3)
352-600	.476 (12.1)	.600 (15.2)	.635 (16.1)	.697 (17.7)	.060 (1.5)	.090 (2.3)
355-700					.000	.030 (.76)
356-700	.576 (14.6)	.700 (17.8)	.735 (18.7)	.797 (20.2)	.030 (.76)	.060 (1.5)
357-700					.060 (1.5)	.090 (2.3)

2. MATERIAL: NYLON 6/6, 94V-2, WHITE.

1. GENERAL SPECIFICATIONS: BIVAR MOLDED COMPONENT SPECIFICATION BV00-E101.

STANDARD TOLERANCE (UNLESS OTHERWISE SPECIFIED)		 BIVAR [®] 4 THOMAS, IRVINE, CA. 92618 TEL: (949) 951-8808 FAX: (949) 951-3974	
DECIMALS	ANGULAR		
.X ± .1	X° ± 1°	 TITLE: 330 SERIES SINGLE & DOUBLE IN-LINE MOUNT	
.XX ± .01			
.XXX ± .005		REVISION: G	
DESIGNED: M. Chen	DATE: 01/30/03	PART NO: 33X-XXX	
CHECKED: D. Green	DATE: 01/30/03	CAGE CODE : 32559 SHEET # 1 OF 1	
CAD GENERATED DOCUMENT. DO NOT MEASURE DRAWING.			