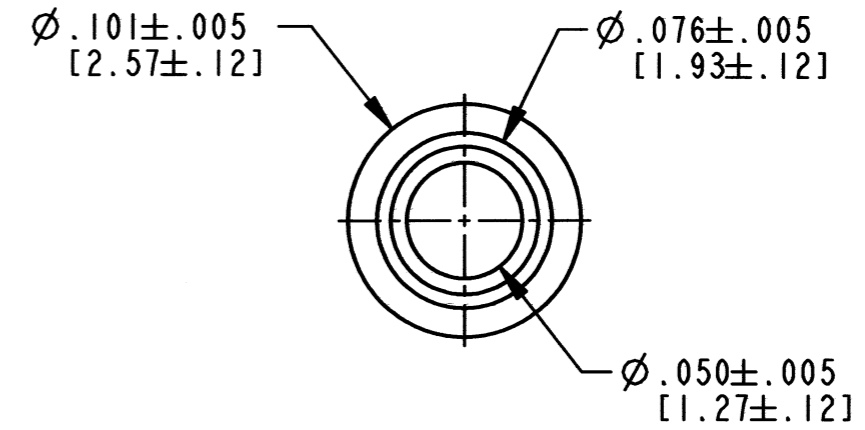
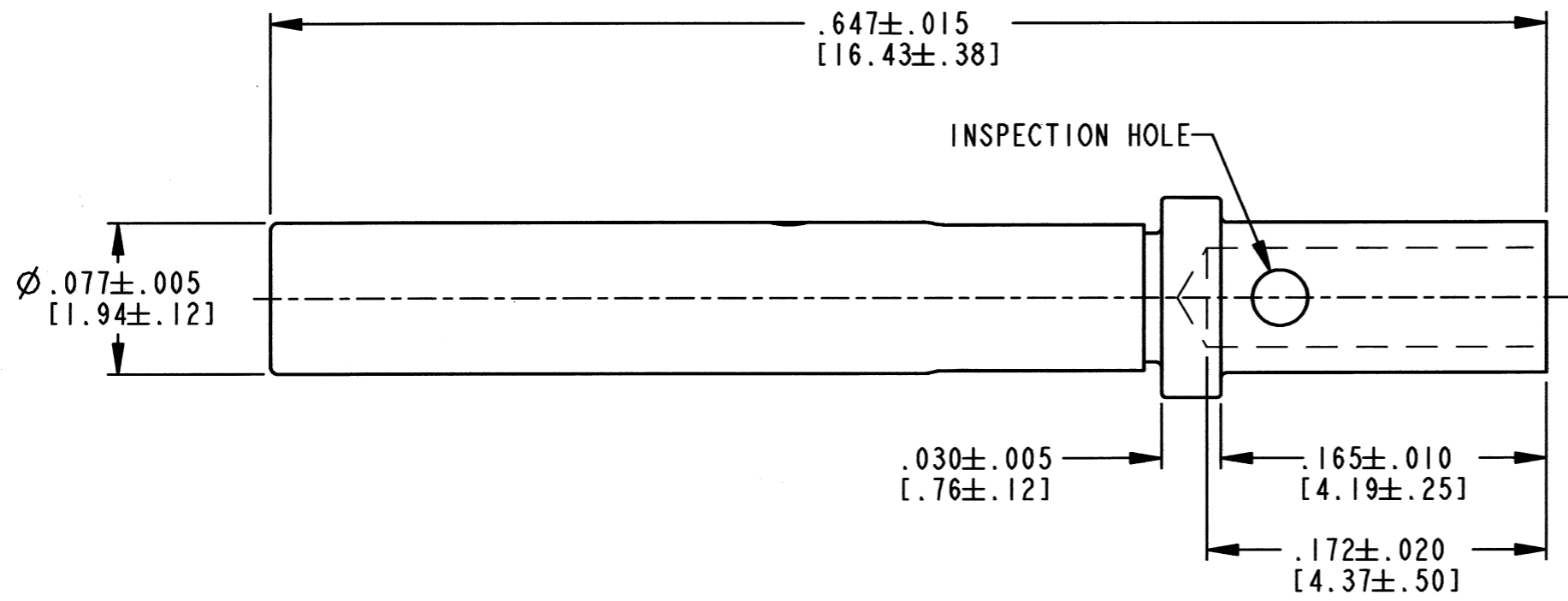


REV B	0462-201-20**	REVISIONS			
		SYM	DESCRIPTION	DATE	APPROVED
		NC	NEW RELEASE PER E.O. A14616	6-22-94	R.D.R.
		A	REVISED PER E.O. P15996	5-25-99	R.D.R.
		B	REVISED PER E.O. P21222	12-7-11	RDR




4. FOR CONTACT PERFORMANCE AND APPLICATION CHARACTERISTICS SEE DRAWING 0425-015-0000.
3. FOR CRIMPING INFORMATION SEE DRAWING 0425-205-0000.
2. WHEN ** = 31: GOLD OVER NICKEL OVER COPPER
 WHEN ** = 141: NICKEL OVER COPPER
 WHEN ** = 309: TIN OVER NICKEL OVER COPPER
1. DIMENSIONS ARE IN INCHES [mm].

NOTES: UNLESS OTHERWISE SPECIFIED

SIGNATURE & DATE	
DR	D. MEYER 4/16/99
CHK	DMeyer 2/7/11
PE	DMeyer 12/7/11
APPD	R. Reed 12-7-11
SCALE 12:1	WT _____

CONTACT SOCKET
SIZE 20

ENVELOPE

EP	MATL. CODE
 3850 INDUSTRIAL AVE. HEMET, CA 92545	
B 0462-201-20**	
DWG SIZE	CODE 11139 SHEET OF

