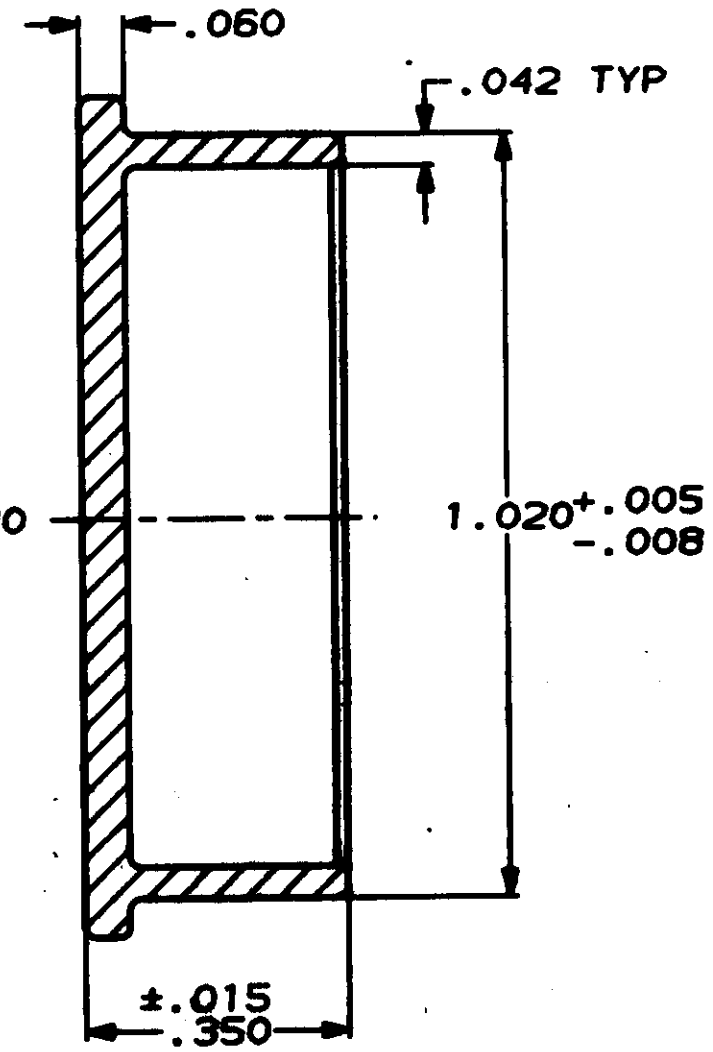
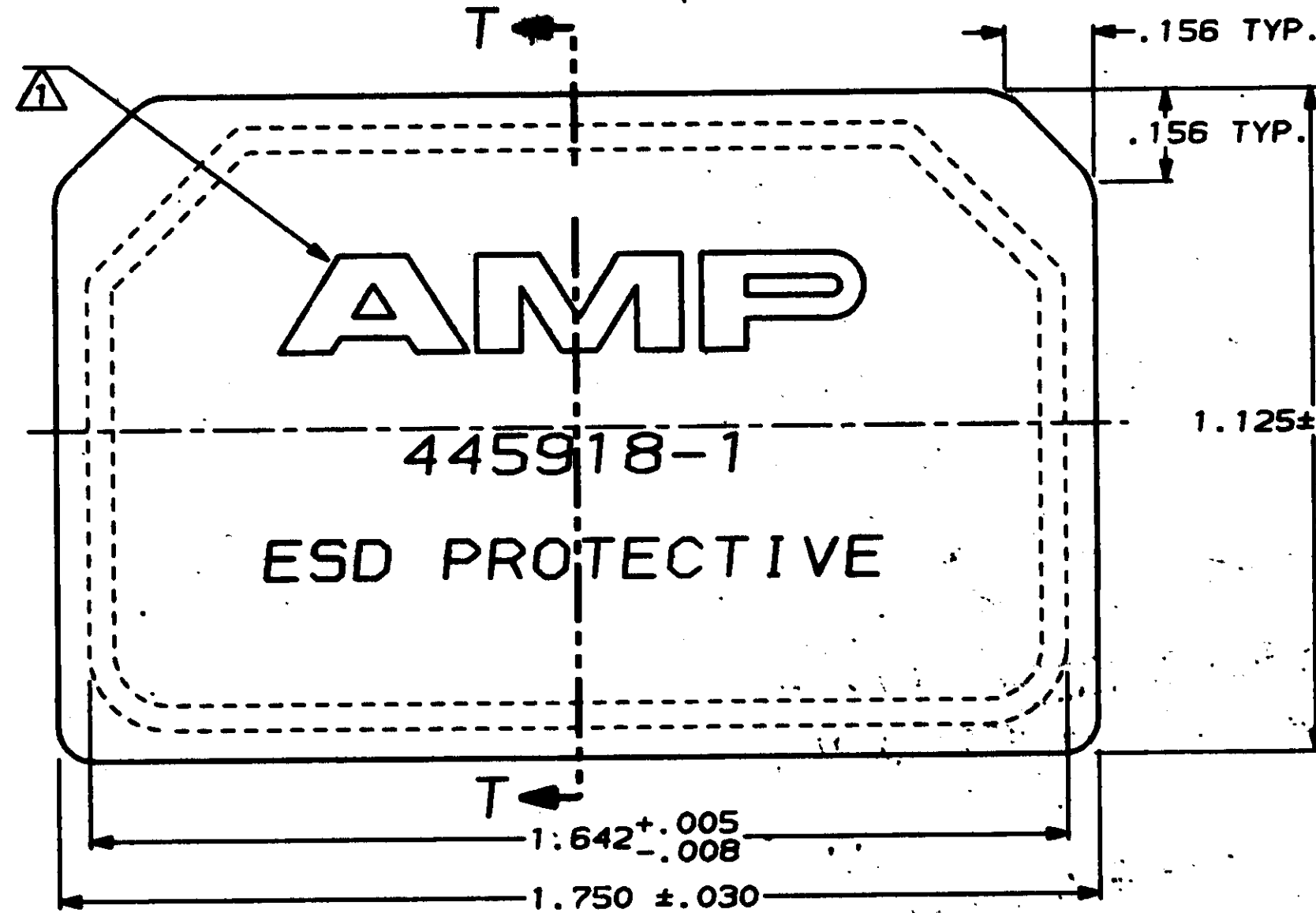


THIS DRAWING IS UNPUBLISHED. RELEASED FOR PUBLICATION , 19

© COPYRIGHT 19 BY AMP INCORPORATED. ALL INTERNATIONAL RIGHTS RESERVED.

PROJ LGC DIST  
5049 DF A0

		REVISIONS			
ZONE	LTR	DESCRIPTION	DATE	APPD	
	0	RLSE/NPR 89-015 CCT	2-89	EH	
	A	REV PER ECN DF-1837 TW	5-89	EH	
✓	B	REV PER DF-3934 CT	6-89	12-70	



SECTION T-T

⚠ MARKING IS MOLDED IN AND RAISED .005-.012 ABOVE SURFACE APPROX: AS SHOWN.

DO NOT SCALE PRINT. UNLESS SPECIFIED DIMENSIONS IN INCHES TOLERANCES ON: Ø PLC DEC ± .005 Ø PLC DEC ± .008 ANGLES ± .5	ON 2-15-89 C.E. THOMPSON CHK 3-1-89 E. HENNING APPD 3-1-89 E. HENNING APPD 3-1-89 E. HENNING
MATERIAL <b>CONDUCTIVE THERMOPLASTIC</b>	PRODUCT SPEC -
FINISH <b>BLACK</b>	APPLICATION SPEC -
	RETRY -

SIZE <b>B</b>	PCN NO <b>00779</b>	DRAWING NO <b>445918</b>
SCALE <b>4:1</b>	SHEET <b>1 OF 1</b>	

<b>445918-1</b>	
PART NO	
<b>AMP</b> AMP INCORPORATED Harrisburg, Pa. 17106	
<b>DUST COVER, ARINC 404 DUAL RECEPTACLE</b>	

CUSTOMER DRAWING