

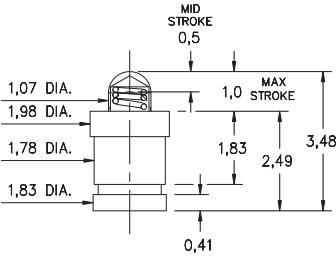
# SPRING-LOADED PINS

## DISCRETE SPRING-LOADED CONTACTS • SURFACE MOUNT

### 0910-0

0910-0-57-20-76-14-11-0

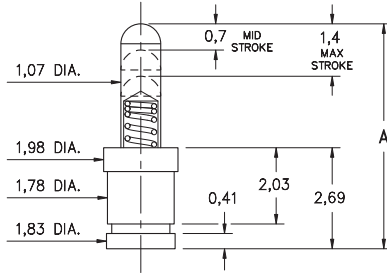
Short stroke, Surface mount  
Packaged on 16mm wide carrier tape:  
2,000 parts per 330mm reel.



### 0910-1 ⇨ 4

0910-X-57-20-75-14-11-0

Standard stroke, Surface mount  
Packaged on carrier tape.  
See chart for tape width and qty. per reel



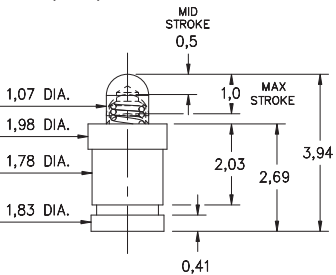
Basic Part Number	Length A
0910-1	4,5
0910-2	5,0
0910-3	5,51
0910-4	5,99

Basic Part Number	Tape Width	Quantity per Reel
0910-1	16mm	1,500
0910-2	24mm	1,100
0910-3	24mm	1,100
0910-4	24mm	1,100

### 0910-8

0910-8-57-20-76-14-11-0

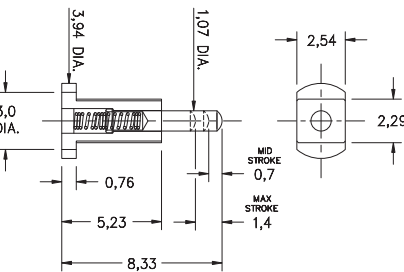
Short stroke, Surface mount  
Packaged on 16mm wide carrier tape:  
1,800 parts per 330mm reel.



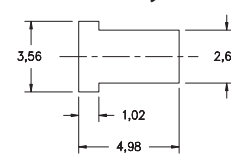
### 0967

0967-0-15-20-75-14-11-0

Standard stroke, Horizontal surface mount  
Also available on 16mm wide carrier tape: 2,200 parts  
per 330mm reel. Order as: 0967-0-58-20-75-14-11-0



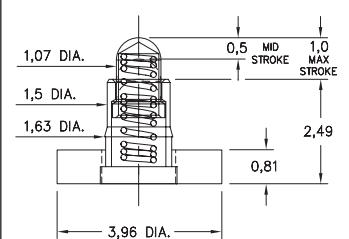
P.C.B. Layout



### 0990-0

0990-0-50-20-76-14-11-0

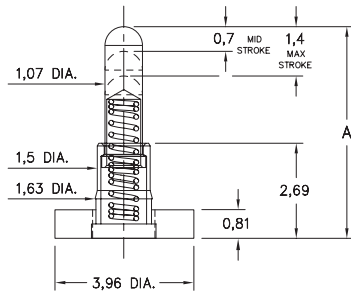
Short stroke, Surface mount, Large base



### 0990-1 ⇨ 4

0990-X-50-20-75-14-11-0

Standard stroke, Surface mount, Large base

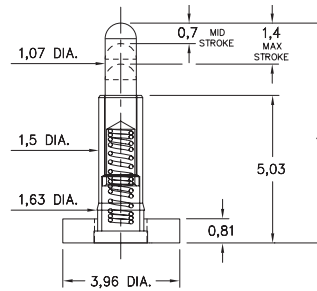


Basic Part Number	Length A
0990-1	4,5
0990-2	5,0
0990-3	5,51
0990-4	5,99

### 0997-0 ⇨ 9

0997-X-50-20-75-14-11-0

Standard stroke, Surface mount, Large base, Mid profile



Basic Part Number	Length A
0997-0	6,48
0997-1	6,99
0997-2	7,49
0997-3	8,0
0997-4	8,51
0997-5	8,89
0997-6	9,4
0997-7	9,91
0997-8	10,41
0997-9	10,92

#### Material Specifications:

**Sleeve & Plunger Material:** Copper Alloy  
**Spring Material:** Beryllium Copper  
**Sleeve & Plunger Finish:** 0,5µm Gold over Nickel  
**Spring Finish:** 0,25µm Gold over Nickel  
**Dimensions:** Millimeters  
**Tolerances On:** Lengths: ± 0,15  
 Diameters: ± 0,051  
 Angles: ± 2°



#### Mechanical & Electrical Specifications:

**Durability:** 1,000,000 cycles  
**Current Rating:** 2A continuous, 3A peak  
**Contact Resistance:** 20 mΩ max.  
**Environmental Specifications:**  
**Operating temperature range:** -55/+125° C

**75, 76 Springs are not interchangeable**

Order Code: 09XX - X - XX - 20 - **7X** - 14 - 11 - 0

Spring Number

Spring Number	Mid. Stroke	Max. Stroke	Force @ Mid. Stroke	Initial Force (Pre-Load)
75	0,7	1,4	60 g	25 g
76	0,5	0,99	60 g	25 g

