

MICRO SWITCH

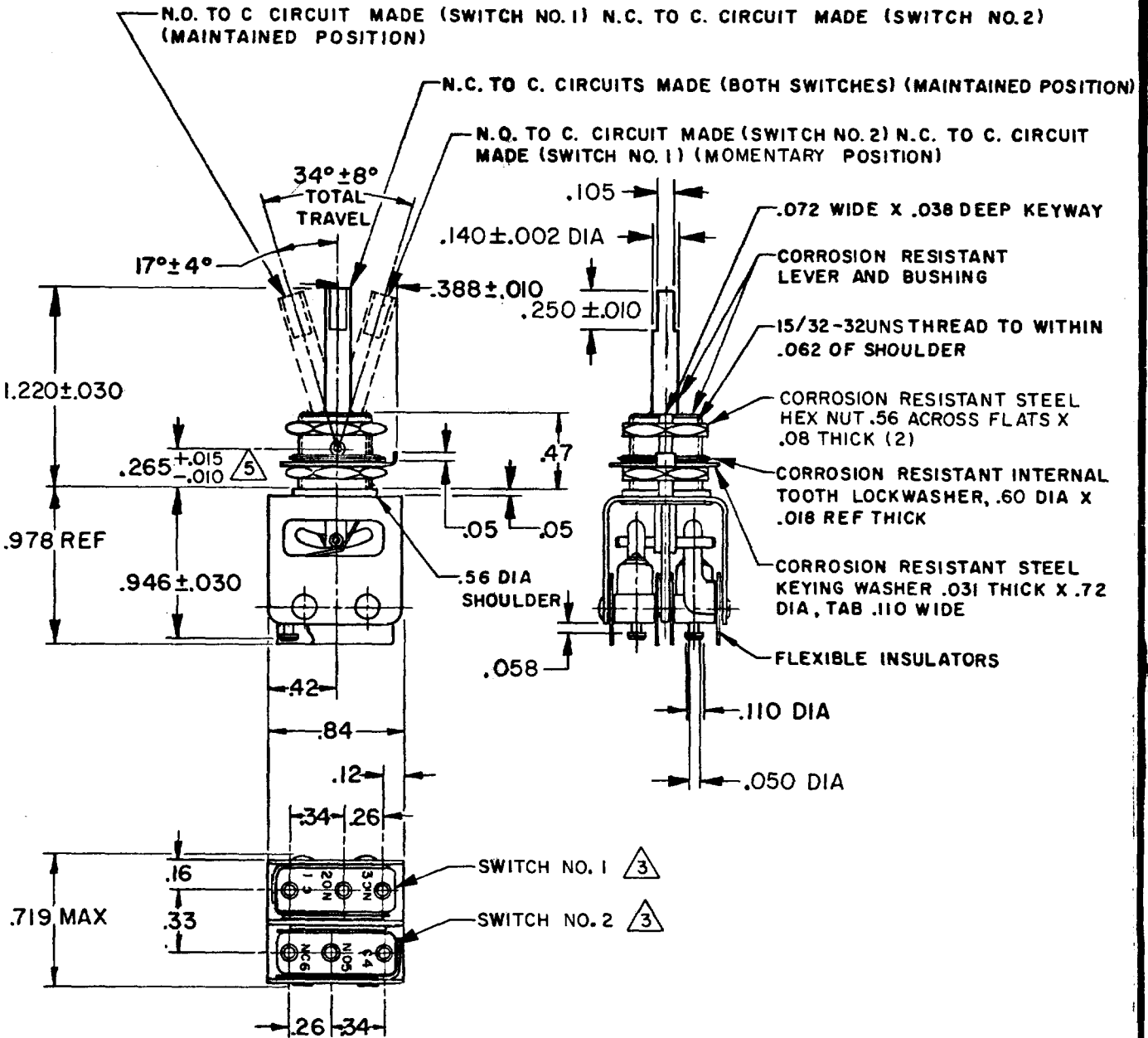
FREERPORT ILLINOIS, U.S.A
A DIVISION OF HONEYWELL
FED. MFG. CODE 91929

ASSEMBLY - TOGGLE SWITCH

CATALOG LISTING
13AT97-T

CUSTOMER PART NUMBER
721858-28

13AT97-T
 PAGE 1 OF 1
M
 DRAWING NUMBER
 ISSUE
 REVISIONS
 A C050771
 J A P
 19 JAN 82
 B C051042
 C J H
 9 MAR 82
 C O
 52725
 S L
 20 MAY 83
 D C066089
 D A W
 13 FEB 91
 E C092352
 D L T
 23 JUN 99
 FORMTEK
 FO-52848-A
 DRAWN
 J A P 19 JAN 82 CHECK C E B 20 JAN 82
 RELEASE NO. SR 10228
 REPLACES



NOTES

- 1 - UNIT INCLUDES CATALOG LISTING "22SM267-T" TYPE BASIC SWITCH (2)
- 2 - TERMINALS ARE PLATED FOR SOLDERING
- 3 - NUMERICAL TERMINAL DESIGNATION MARKED ADJACENT STANDARD DESIGNATION
- 4 - BASIC SWITCHES HAVE 24K GOLD OVERLAY CONTACTS
- 5 - DETERMINED BY BUSHING PIVOT HOLE CENTER

THIS DRAWING COVERS A PROPRIETARY ITEM AND IS THE PROPERTY OF MICRO SWITCH, A DIVISION OF HONEYWELL. THIS DRAWING IS NOT TO BE COPIED OR USED WITHOUT THE APPROVAL OF MICRO SWITCH.

THIRD ANGLE PROJECTION

CHARACTERISTICS

ELECTRICAL DATA

SCALE FULL

CONTACT ARRANGEMENT
S P D T (2)

DO NOT SCALE PRINT

30 VOLTS DC RATING

INDUCTIVE ----- SEA LEVEL - 1/2 AMP
 50,000 FT - 1/2 AMP
 RESISTIVE ----- SEA LEVEL - 1 AMP
 50,000 FT - 1 AMP
 MAXIMUM INRUSH ----- 2 AMP

TOLERANCES

APPLY TO DESIGN UNITS. CONVERSIONS ARE ONLY FOR REFERENCE. UNLESS NOTED, TOLERANCES ARE ±

	DIM.	TOL.	DIM.	TOL.
	mm	mm/in	in	mm/in
NO PLACES	X	1/.64	X, X	0.87/03
ONE PLACE	X, X	0.47/016	X, X, X	0.387/015
TWO PLACES	X, X, X	0.157/006	X, X, X, X	0.137/005
THREE PLACES	X, X, X, X			
ANGLES				

DESIGN UNITS METRIC US CUSTOMARY

WEIGHT .06 LB