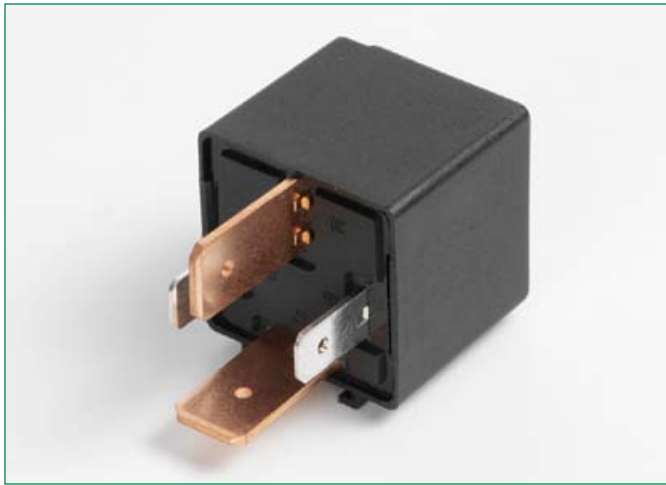


STARTER Relays

RoHS

Relays



Specifications

Normally open relay

Color Case: Black

Color Base: Black

Packaging:

Series Seriens	Pack Size
020405xxTXN	10
020405xxZ	200

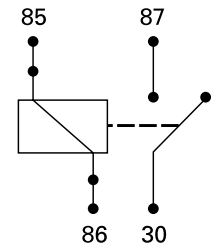
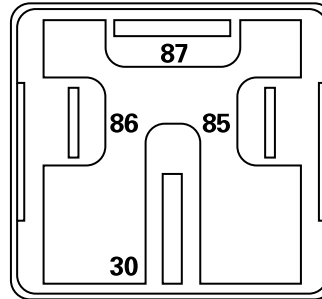
HOMOLOGATION IN ACCORDANCE WITH:

E3 REGULATION N.10 ECE-ONU/02

e3 EUROPEAN DIRECTIVE DIR.95/54 CE

Remote control switches for automotive applications available for 12V and 24V rated circuits.

Relais für Anwendungen im Automobilbereich, erhältlich für 12V und 24V Bordnetze.



Pins nr 30 and 87 are 9.5 mm

Normally open relay

Part Number Artikel-Nr.	Volt	Ampere	Feature Merkmal	Diagram/Schema
02040502_	12V	50A	-	A
02040501_	12V	70A	-	A
02040505_	24V	30A	-	A
02040504_	24V	40A	-	A
02040503_	24V	50A	-	A



Bracket for ISO MINI Relay or STARTER Relay

**Part Number
Artikel-Nr.**

02040700_

Series Seriens	Pack Size
020407xxTXN	10
020407xxZ	500

Last figure of part number = packaging code, see Section "Packaging Index," pg. 149.