

High Voltage Ceramic Capacitors



HP/HW/HK Type – Strontium-based Dielectric

FEATURES

- Excellent behavior on pulse and fast discharge conditions
- Excellent capacitance vs voltage characteristic
- Low dissipation factor
- Very low Corona effect
- Coated and uncoated devices available

APPLICATIONS

- High-voltage supply for gas lasers
- High-voltage dividers
- Marx generators
- Power generators
- High-voltage power supply
- High-voltage coupling devices
- Power line coupling system for Internet & Telecom

TECHNOLOGY

- **HP** range: Coated capacitor with fixtures
- **HW** range: Uncoated capacitor with fixtures
- **HK** range: Uncoated capacitor without fixtures
- Fixtures: M5
- Marking: on each part: type – capacitance – rated voltage
- Delivery mode: bulk in carton box
- Dielectric Type II: N4700 class (see typical curves page 13)



DIELECTRIC CHARACTERISTICS

| TPC code | E |
|---|---------------------|
| Dielectric class (DIN) | N4700 |
| Operating temperature range (°C) | -30/+85°C |
| Capacitance change with temperature (%) | +22/-33% |
| Typical dielectric constant | 1850 |
| Dielectric strength kV _{DC} /mm | 8.0 |
| Dissipation factor (1kHz/1V _{RMS} /20°C) | 20.10 ⁻⁴ |
| Insulation resistance (1000V _D /20°C/60s) | >100GΩ |

ELECTRICAL CHARACTERISTICS

| | |
|---|------------------------------------|
| Rated voltage (V _R) | 15 to 100 kVdc* |
| Test voltage (V _E) (50Hz, in oil, 60s) | 12 to 80 kVrms |
| Operating Temperature ranges | -30 +85°C |
| Temperature characteristic | N4700 |
| Dissipation factor (20°C, 1kHz, 1V _{RMS}) | <20.10 ⁻⁴ |
| Insulation resistance (1000Vdc/60s) | >100GΩ |
| Capacitance range (20°C – 1kHz – 1V _{RMS}) | 195pF to 5600pF |
| Tolerance | Standard: ±20% On request: ±10% |
| Self-inductance | L _S ≤ 30nH |

*up to 150kVdc: upon request

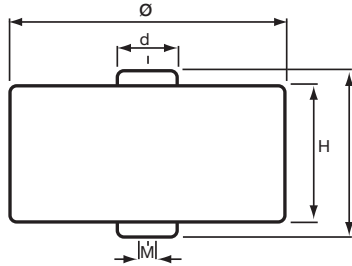
High Voltage Ceramic Capacitors



HP/HW/HK Type – Strontium-based Dielectric

HP RANGE: COATED DEVICES WITH FIXTURES

REFERENCES – VOLTAGE AND CAPACITANCE RANGE



All fixtures: M5
(0.197)

| Part Number | Rated Voltage kVdc | Rated Voltage kVrms | Test Voltage kVrms | Corona Inception Voltage (kVrms) (<10pc) | Capacitance ±20% (pF) ±10% on request | Dimensions millimeters (inches) | | | | Packaging Unit | | | | | | |
|----------------|-----------------------|------------------------|-----------------------|--|---|---------------------------------|------------|------------|------------|----------------|-----|------------|------------|------------|------------|----|
| | | | | | | Ø ± 1 | d | L ± 1 | H ± 2 | | | | | | | |
| HP30EX0561M -- | 15 | 10 | 12 | 6 | 560 | 28 (1.100) | 12 (0.472) | 22 (0.866) | 16 (0.630) | 40 | | | | | | |
| HP30EX0751M -- | | | | | 750 | 28 (1.100) | 12 (0.472) | | | 40 | | | | | | |
| HP30EX0102M -- | | | | | 1000 | 28 (1.100) | 12 (0.472) | | | 40 | | | | | | |
| HP40EX0152M -- | | | | | 1500 | 38 (1.500) | 12 (0.472) | | | 40 | | | | | | |
| HP40EX0182M -- | | | | | 1800 | 38 (1.500) | 12 (0.472) | | | 40 | | | | | | |
| HP40EX0202M -- | | | | | 2000 | 38 (1.500) | 12 (0.472) | | | 40 | | | | | | |
| HP50EX0252M -- | | | | | 2500 | 48 (1.900) | 12 (0.472) | | | 45 | | | | | | |
| HP50EX0272M -- | | | | | 2700 | 48 (1.900) | 12 (0.472) | | | 45 | | | | | | |
| HP50EX0332M -- | | | | | 3300 | 48 (1.900) | 12 (0.472) | | | 45 | | | | | | |
| HP60EX0372M -- | | | | | 3700 | 58 (2.283) | 15 (0.591) | | | 20 | | | | | | |
| HP60EX0402M -- | | | | | 4000 | 58 (2.283) | 15 (0.591) | | | 20 | | | | | | |
| HP60EX0502M -- | | | | | 5000 | 58 (2.283) | 15 (0.591) | | | 20 | | | | | | |
| HP60EX0562M -- | 5600 | 58 (2.283) | 15 (0.591) | 20 | | | | | | | | | | | | |
| HP30EY0501M -- | 20 | 15 | 18 | 9 | 500 | 28 (1.100) | 12 (0.472) | 24 (0.945) | 18 (0.709) | 40 | | | | | | |
| HP30EY0561M -- | | | | | 560 | 28 (1.100) | 12 (0.472) | | | 40 | | | | | | |
| HP30EY0751M -- | | | | | 750 | 28 (1.100) | 12 (0.472) | | | 40 | | | | | | |
| HP40EY0102M -- | | | | | 1000 | 38 (1.500) | 12 (0.472) | | | 40 | | | | | | |
| HP40EY0132M -- | | | | | 1300 | 38 (1.500) | 12 (0.472) | | | 40 | | | | | | |
| HP40EY0152M -- | | | | | 1500 | 38 (1.500) | 12 (0.472) | | | 40 | | | | | | |
| HP50EY0202M -- | | | | | 2000 | 48 (1.900) | 12 (0.472) | | | 45 | | | | | | |
| HP50EY0222M -- | | | | | 2200 | 48 (1.900) | 12 (0.472) | | | 45 | | | | | | |
| HP50EY0252M -- | | | | | 2500 | 48 (1.900) | 12 (0.472) | | | 45 | | | | | | |
| HP60EY0302M -- | | | | | 3000 | 58 (2.283) | 15 (0.591) | | | 20 | | | | | | |
| HP60EY0332M -- | | | | | 3300 | 58 (2.283) | 15 (0.591) | | | 20 | | | | | | |
| HP60EY0372M -- | | | | | 3700 | 58 (2.283) | 15 (0.591) | | | 20 | | | | | | |
| HP60EY0402M -- | 4000 | 58 (2.283) | 15 (0.591) | 20 | | | | | | | | | | | | |
| HP30E30561M -- | 30 | 20 | 24 | 12 | 560 | 28 (1.100) | 12 (0.472) | 26 (1.024) | 20 (0.787) | 40 | | | | | | |
| HP40E30821M -- | | | | | 820 | 38 (1.500) | 12 (0.472) | | | 40 | | | | | | |
| HP40E30102M -- | | | | | 1000 | 38 (1.500) | 12 (0.472) | | | 40 | | | | | | |
| HP40E31121M -- | | | | | 1120 | 38 (1.500) | 12 (0.472) | | | 40 | | | | | | |
| HP50E30152M -- | | | | | 1500 | 48 (1.900) | 12 (0.472) | | | 45 | | | | | | |
| HP50E30172M -- | | | | | 1700 | 48 (1.900) | 12 (0.472) | | | 45 | | | | | | |
| HP50E30202M -- | | | | | 2000 | 48 (1.900) | 12 (0.472) | | | 45 | | | | | | |
| HP60E30272M -- | | | | | 2700 | 58 (2.283) | 15 (0.591) | | | 20 | | | | | | |
| HP60E30302M -- | | | | | 3000 | 58 (2.283) | 15 (0.591) | | | 20 | | | | | | |
| HP60E30332M -- | | | | | 3300 | 58 (2.283) | 15 (0.591) | | | 20 | | | | | | |
| HP30E40391M -- | | | | | 40 | 28 | 33 | | | 17 | 390 | 28 (1.100) | 12 (0.472) | 30 (1.180) | 24 (0.945) | 40 |
| HP40E40751M -- | | | | | | | | | | | 750 | 38 (1.500) | 12 (0.472) | | | 40 |
| HP50E40102M -- | 1000 | 48 (1.900) | 12 (0.472) | 30 | | | | | | | | | | | | |
| HP50E40142M -- | 1400 | 48 (1.900) | 12 (0.472) | 30 | | | | | | | | | | | | |
| HP60E40172M -- | 1700 | 58 (2.283) | 15 (0.591) | 20 | | | | | | | | | | | | |
| HP60E40202M -- | 2000 | 58 (2.283) | 15 (0.591) | 20 | | | | | | | | | | | | |
| HP60E40242M -- | 2400 | 58 (2.283) | 15 (0.591) | 20 | | | | | | | | | | | | |

-Other tolerance on capacitance value: please consult us

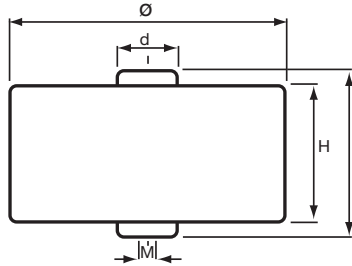
High Voltage Ceramic Capacitors



HP/HW/HK Type – Strontium-based Dielectric

HP RANGE: COATED DEVICES WITH FIXTURES

REFERENCES – VOLTAGE AND CAPACITANCE RANGE



All fixtures: M5
(0.197)

| Part Number | Rated Voltage kVdc | Rated Voltage kVrms | Test Voltage kVrms | Corona Inception Voltage (kVrms) (<10pc) | Capacitance ±20% (pF) ±10% on request | Dimensions millimeters (inches) | | | | Packaging Unit |
|----------------|-----------------------|------------------------|-----------------------|--|---|---------------------------------|------------|--------------|------------|----------------|
| | | | | | | Ø ± 1 | d | L ± 1 | H ± 2 | |
| HP30E50281M -- | 50 | 35 | 42 | 21 | 280 | 28 (1.100) | 12 (0.472) | 37 (1.457) | 31 (1.221) | X |
| HP40E50411M -- | | | | | 410 | 38 (1.500) | 12 (0.472) | | | |
| HP40E50501M -- | | | | | 500 | 38 (1.500) | 12 (0.472) | | | |
| HP40E50561M -- | | | | | 560 | 38 (1.500) | 12 (0.472) | | | |
| HP50E50751M -- | | | | | 750 | 48 (1.900) | 12 (0.472) | | | |
| HP50E50851M -- | | | | | 850 | 48 (1.900) | 12 (0.472) | | | |
| HP50E50102M -- | | | | | 1000 | 48 (1.900) | 12 (0.472) | | | |
| HP60E51351M -- | | | | | 1350 | 58 (2.283) | 15 (0.591) | | | |
| HP60E50152M -- | | | | | 1500 | 58 (2.283) | 15 (0.591) | | | |
| HP60E51651M -- | | | | | 1650 | 58 (2.283) | 15 (0.591) | | | |
| HP30E61950M -- | 60 | 42 | 50 | 25 | 195 | 28 (1.100) | 12 (0.472) | 45 (1.772) | 39 (1.536) | X |
| HP40E63750M -- | | | | | 375 | 38 (1.500) | 12 (0.472) | | | |
| HP50E60501M -- | | | | | 500 | 48 (1.900) | 12 (0.472) | | | |
| HP50E60701M -- | | | | | 700 | 48 (1.900) | 12 (0.472) | | | |
| HP60E60851M -- | | | | | 850 | 58 (2.283) | 15 (0.591) | | | |
| HP60E60102M -- | | | | | 1000 | 58 (2.283) | 15 (0.591) | | | |
| HP60E60122M -- | | | | | 1200 | 58 (2.283) | 15 (0.591) | | | |
| HP50E90501M -- | 100 | 70 | 80 | 40 | 500 | 48 (1.900) | 12 (0.472) | 58.5 (2.303) | 53 (2.087) | 15 |
| HP60E96750M -- | | | | | 675 | 58 (2.283) | 15 (0.591) | | | 10 |
| HP60E90751M -- | | | | | 750 | 58 (2.283) | 15 (0.591) | | | 10 |
| HP60E98250M -- | | | | | 825 | 58 (2.283) | 15 (0.591) | | | 10 |

NEW

X = open request
-Other tolerance on capacitance value: please consult us

High Voltage Ceramic Capacitors

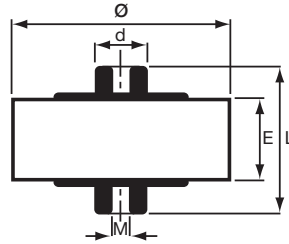


HP/HW/HK Type – Strontium-based Dielectric

HW RANGE: UNCOATED DEVICES WITH FIXTURES

REFERENCES – VOLTAGE AND CAPACITANCE RANGE

Handling of uncoated devices must be done under strict cleanliness conditions.



All fixtures: M5
(0.197)

| Part Number | Rated Voltage (kVdc) | Rated Voltage (kVrms) | Test Voltage (kVrms)* | Corona Inception Voltage (kVrms) (<12pC)* | Capacitance ±20% (pF) ±10% on request | Dimensions millimeters (inches) | | | Packaging Unit |
|----------------|----------------------|-----------------------|-----------------------|---|---------------------------------------|---------------------------------|------------|------------|----------------|
| | | | | | | Ø ± 2 | L ± 1 | E ± 2 | |
| HW30EX0561M -- | 15 | 10 | 12 | 6 | 560 | 17 (0.670) | 22 (0.866) | 6 (0.236) | 40 |
| HW30EX0751M -- | | | | | 750 | 18 (0.719) | | | 40 |
| HW30EX0102M -- | | | | | 1000 | 21 (0.827) | | | 40 |
| HW40EX0152M -- | | | | | 1500 | 26 (1.024) | | | 40 |
| HW40EX0182M -- | | | | | 1800 | 28 (1.103) | | | 40 |
| HW40EX0202M -- | | | | | 2000 | 29 (1.142) | | | 60 |
| HW50EX0252M -- | | | | | 2500 | 34 (1.339) | | | 45 |
| HW50EX0272M -- | | | | | 2700 | 35 (1.378) | | | 45 |
| HW50EX0332M -- | | | | | 3300 | 38 (1.496) | | | 45 |
| HW60EX0372M -- | | | | | 3700 | 41 (1.614) | | | 30 |
| HW60EX0402M -- | | | | | 4000 | 43 (1.692) | | | 30 |
| HW60EX0502M -- | | | | | 5000 | 47 (1.850) | | | 30 |
| HW60EX0562M -- | 5600 | 49 (1.929) | 30 | | | | | | |
| HW30EY0501M -- | 20 | 15 | 18 | 9 | 500 | 17 (0.670) | 24 (0.945) | 8 (0.314) | 40 |
| HW30EY0561M -- | | | | | 560 | 18 (0.719) | | | 40 |
| HW30EY0751M -- | | | | | 750 | 21 (0.827) | | | 40 |
| HW40EY0102M -- | | | | | 1000 | 26 (1.024) | | | 40 |
| HW40EY0132M -- | | | | | 1300 | 28 (1.103) | | | 40 |
| HW40EY0152M -- | | | | | 1500 | 29 (1.142) | | | 40 |
| HW50EY0202M -- | | | | | 2000 | 34 (1.339) | | | 45 |
| HW50EY0222M -- | | | | | 2200 | 35 (1.378) | | | 45 |
| HW50EY0252M -- | | | | | 2500 | 38 (1.496) | | | 45 |
| HW60EY0302M -- | | | | | 3000 | 41 (1.614) | | | 20 |
| HW60EY0332M -- | | | | | 3300 | 43 (1.692) | | | 20 |
| HW60EY0372M -- | | | | | 3700 | 47 (1.850) | | | 20 |
| HW60EY0402M -- | 4000 | 49 (1.929) | 20 | | | | | | |
| HW30E30561M -- | 30 | 20 | 24 | 12 | 560 | 21 (0.827) | 26 (1.024) | 10 (0.394) | 40 |
| HW40E30821M -- | | | | | 820 | 26 (1.024) | | | 40 |
| HW40E30102M -- | | | | | 1000 | 28 (1.103) | | | 40 |
| HW40E31121M -- | | | | | 1120 | 29 (1.142) | | | 40 |
| HW50E30152M -- | | | | | 1500 | 34 (1.339) | | | 45 |
| HW50E30172M -- | | | | | 1700 | 35 (1.378) | | | 45 |
| HW50E30202M -- | | | | | 2000 | 38 (1.496) | | | 45 |
| HW60E30272M -- | | | | | 2700 | 43 (1.692) | | | 20 |
| HW60E30302M -- | | | | | 3000 | 47 (1.850) | | | 20 |
| HW60E30332M -- | | | | | 3300 | 49 (1.929) | | | 20 |
| HW30E40391M -- | 40 | 28 | 33 | 17 | 390 | 21 (0.827) | 30 (1.180) | 14 (0.552) | 40 |
| HW40E40751M -- | | | | | 750 | 28 (1.103) | | | 40 |
| HW50E40102M -- | | | | | 1000 | 34 (1.339) | | | 30 |
| HW50E40142M -- | | | | | 1400 | 38 (1.496) | | | 30 |
| HW60E40172M -- | | | | | 1700 | 41 (1.614) | | | 20 |
| HW60E40202M -- | | | | | 2000 | 47 (1.850) | | | 20 |
| HW60E40242M -- | | | | | 2400 | 49 (1.929) | | | 20 |

*tested in oil or Galden

-Other tolerance on capacitance value: please consult us

High Voltage Ceramic Capacitors

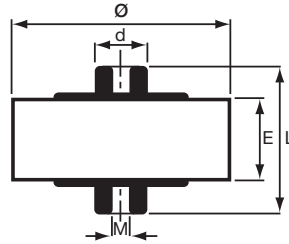


HP/HW/HK Type – Strontium-based Dielectric

HW RANGE: UNCOATED DEVICES WITH FIXTURES

REFERENCES – VOLTAGE AND CAPACITANCE RANGE

Handling of uncoated devices must be done under strict cleanliness conditions.



All fixtures: M5
(0.197)

| Part Number | Rated Voltage (kVdc) | Rated Voltage (kVrms) | Test Voltage (kVrms)* | Corona Inception Voltage (kVrms) (<12pC)* | Capacitance ±20% (pF) ±10% on request | Dimensions millimeters (inches) | | | Packaging Unit |
|----------------|----------------------|-----------------------|-----------------------|---|---------------------------------------|---------------------------------|--------------|------------|----------------|
| | | | | | | Ø ± 2 | L ± 1 | E ± 2 | |
| HW30E50281M -- | 50 | 35 | 42 | 21 | 280 | 21 (0.827) | 37 (1.457) | 21 (0.827) | X |
| HW40E50411M -- | | | | | 410 | 26 (1.024) | | | |
| HW40E50501M -- | | | | | 500 | 28 (1.103) | | | |
| HW40E50561M -- | | | | | 560 | 29 (1.142) | | | |
| HW50E50751M -- | | | | | 750 | 34 (1.339) | | | |
| HW50E50851M -- | | | | | 850 | 35 (1.378) | | | |
| HW50E50102M -- | | | | | 1000 | 38 (1.496) | | | |
| HW60E51351M -- | | | | | 1350 | 43 (1.692) | | | |
| HW60E50152M -- | | | | | 1500 | 47 (1.850) | | | |
| HW60E51651M -- | 1650 | 49 (1.929) | | | | | | | |
| HW30E61950M -- | 60 | 42 | 50 | 25 | 195 | 21 (0.827) | 45 (1.772) | 29 (1.142) | X |
| HW40E63750M -- | | | | | 375 | 28 (1.024) | | | |
| HW50E60501M -- | | | | | 500 | 34 (1.339) | | | |
| HW50E60701M -- | | | | | 700 | 38 (1.496) | | | |
| HW60E60851M -- | | | | | 850 | 41 (1.614) | | | |
| HW60E60102M -- | | | | | 1000 | 47 (1.850) | | | |
| HW60E60122M -- | 1200 | 49 (1.929) | | | | | | | |
| HW50E90501M -- | 100 | 70 | 80 | 40 | 500 | 38 (1.496) | 58.5 (2.303) | 43 (1.693) | 15 |
| HW60E96750M -- | | | | | 675 | 43 (1.693) | | | 10 |
| HW60E90751M -- | | | | | 750 | 47 (1.850) | | | 10 |
| HW60E98250M -- | | | | | 825 | 49 (1.929) | | | 10 |

NEW

*tested in oil or Galden

X = open request

-Other tolerance on capacitance value: please consult us

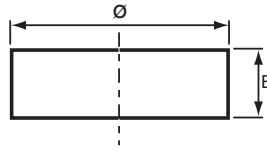
High Voltage Ceramic Capacitors



HP/HW/HK Type – Strontium-based Dielectric

HK RANGE: UNCOATED DEVICES WITHOUT FIXTURES REFERENCES – VOLTAGE AND CAPACITANCE RANGE

Handling of uncoated devices must be done under strict cleanliness conditions.



| Part Number | Rated Voltage (kVdc) | Rated Voltage (kVrms) | Test Voltage (kVrms)* | Corona Inception Voltage (kVrms) (<12pC)* | Capacitance ±20% (pF) ±10% on request | Dimensions millimeters (inches) | |
|--|----------------------|-----------------------|-----------------------|---|--|--|------------|
| | | | | | | Ø ± 2 | E ± 2 |
| HK30EX0561M -- HK30EX0751M -- HK30EX0102M -- HK40EX0152M -- HK40EX0182M -- HK40EX0202M -- HK50EX0252M -- HK50EX0272M -- HK50EX0332M -- HK60EX0372M -- HK60EX0402M -- HK60EX0502M -- HK60EX0562M -- | 15 | 10 | 12 | 6 | 560 750 1000 1500 1800 2000 2500 2700 3300 3700 4000 5000 5600 | 17 (0.670) 18 (0.719) 21 (0.827) 26 (1.024) 28 (1.103) 29 (1.142) 34 (1.339) 35 (1.378) 38 (1.496) 41 (1.614) 43 (1.692) 47 (1.850) 49 (1.929) | 6 (0.236) |
| HK30EY0501M -- HK30EY0561M -- HK30EY0751M -- HK40EY0102M -- HK40EY0132M -- HK40EY0152M -- HK50EY0202M -- HK50EY0222M -- HK50EY0252M -- HK60EY0302M -- HK60EY0302M -- HK60EY0372M -- HK60EY0402M -- | 20 | 15 | 18 | 9 | 500 560 750 1000 1300 1500 2000 2200 2500 3000 3300 3700 4000 | 17 (0.670) 18 (0.719) 21 (0.827) 26 (1.024) 28 (1.103) 29 (1.142) 34 (1.339) 35 (1.378) 38 (1.496) 41 (1.614) 43 (1.692) 47 (1.850) 49 (1.929) | 8 (0.314) |
| HK30E30561M -- HK40E30821M -- HK40E30102M -- HK40E31121M -- HK50E30152M -- HK50E30172M -- HK50E30202M -- HK60E30272M -- HK60E30302M -- HK60E30332M -- | 30 | 20 | 24 | 12 | 560 820 1000 1120 1500 1700 2000 2700 3000 3300 | 21 (0.827) 26 (1.024) 28 (1.103) 29 (1.142) 34 (1.339) 35 (1.378) 38 (1.496) 43 (1.692) 47 (1.850) 49 (1.929) | 10 (0.394) |
| HK30E40391M -- HK40E40721M -- HK50E40102M -- HK50E40142M -- HK60E40172M -- HK60E40202M -- HK60E40242M -- | 40 | 28 | 33 | 17 | 390 720 1000 1400 1700 2000 2400 | 21 (0.827) 28 (1.103) 34 (1.339) 38 (1.496) 41 (1.614) 47 (1.850) 49 (1.929) | 14 (0.552) |

NEW

*tested in oil or Galden
-Other tolerance on capacitance value: please consult us

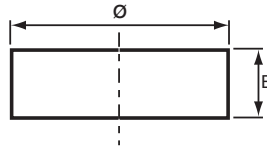
High Voltage Ceramic Capacitors



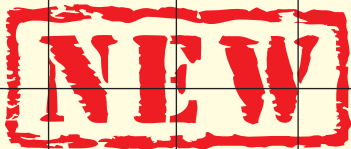
HP/HW/HK Type – Strontium-based Dielectric

HK RANGE: UNCOATED DEVICES WITHOUT FIXTURES REFERENCES – VOLTAGE AND CAPACITANCE RANGE

Handling of uncoated devices must be done under strict cleanliness conditions.



| Part Number | Rated Voltage (kVdc) | Rated Voltage (kVrms) | Test Voltage (kVrms)* | Corona Inception Voltage (kVrms) (<12pC)* | Capacitance ±20% (pF) ±10% on request | Dimensions millimeters (inches) | |
|----------------|----------------------|-----------------------|-----------------------|---|---------------------------------------|---------------------------------|------------|
| | | | | | | Ø ± 2 | E ± 2 |
| HK30E50281M -- | 50 | 35 | 42 | 21 | 280 | 21 (0.827) | 21 (0.827) |
| HK40E50411M -- | | | | | 410 | 26 (1.024) | |
| HK40E50501M -- | | | | | 500 | 28 (1.103) | |
| HK40E50561M -- | | | | | 560 | 29 (1.142) | |
| HK50E50751M -- | | | | | 750 | 34 (1.339) | |
| HK50E50851M -- | | | | | 850 | 35 (1.378) | |
| HK50E50102M -- | | | | | 1000 | 38 (1.496) | |
| HK60E51351M -- | | | | | 1350 | 43 (1.692) | |
| HK60E50152M -- | | | | | 1500 | 47 (1.850) | |
| HK60E51651M -- | | | | | 1650 | 49 (1.929) | |
| HK30E61950M -- | 60 | 42 | 50 | 25 | 195 | 21 (0.827) | 29 (1.142) |
| HK40E63750M -- | | | | | 375 | 28 (1.024) | |
| HK50E60501M -- | | | | | 500 | 34 (1.339) | |
| HK50E60701M -- | | | | | 700 | 38 (1.496) | |
| HK60E60851M -- | | | | | 850 | 41 (1.614) | |
| HK60E60102M -- | | | | | 1000 | 47 (1.850) | |
| HK60E60122M -- | | | | | 1200 | 49 (1.929) | |
| HK50E90501M -- | 100 | 70 | 80 | 40 | 500 | 38 (1.496) | 43 (1.693) |
| HK60E96750M -- | | | | | 675 | 43 (1.693) | |
| HK60E90751M -- | | | | | 750 | 47 (1.850) | |
| HK60E98250M -- | | | | | 825 | 49 (1.929) | |



*tested in oil or Galden
-Other tolerance on capacitance value: please consult us