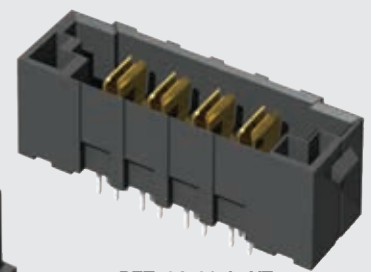




**POWER STRIP 40**



PES-08-02-L-VT



PES-04-01-L-VT

**PES, PET SERIES**

**(6.35 mm) .250"**

# 40 A HIGH POWER HEADER & SOCKET

**PES Mates with:**  
PET

**PET Mates with:**  
PES, PESS

## SPECIFICATIONS

For complete specifications see [www.samtec.com?PET](http://www.samtec.com?PET) or [www.samtec.com?PES](http://www.samtec.com?PES)

**Insulator Material:**

Black LCP

**Terminal Material:**

Copper Alloy

**Plating:**

Sn or Au over 50 μm (1.27 μm) Ni

**Operating Temp Range:**

-55 °C to +105 °C with Tin

-55 °C to +125 °C with Gold

**Voltage Rating:**

725 VAC/1025 VDC

**Wiping Distance:**

(4.14 mm) .163" Max

**Standard Creepage:**

(3.66 mm) .144"

**Standard Clearance:**

(3.31 mm) .130"

**RoHS Compliant:**

Yes

**Lead-Free Solderable:**

Yes

PET/PES	
PINS	CURRENT RATING (PER CONTACT)
1	58.7 A
2	48.5 A
3	41.1 A
4	38.0 A
8	29.4 A

## RECOGNITIONS

For complete scope of recognitions see [www.samtec.com/quality](http://www.samtec.com/quality)



FILE NO. E111594

## ALSO AVAILABLE (MOQ Required)

- Locking Clip (Manual placement required)
- No Latch ears
- Other platings

## OTHER SOLUTIONS

- Combination Signal/Power. See PES or PETC Series.

**Note:** Some sizes, styles and options are non-standard, non-returnable.

PES	NO. PINS PER ROW	LEAD STYLE	PLATING OPTION	TAIL OPTION	OTHER OPTION
	-02, -04, -06, -08	-01 = Use with (1.60 mm) .062" Thick PCB -02 = Use with (3.18 mm) .125" Thick PCB	-L = 10 μm (0.25 μm) Gold on contact, Matte Tin on tail -T = Matte Tin	-VT = Vertical -RA = Right-angle (Screw Down option required)	-SD = Screw Down (Right-angle only)

LEAD STYLE	A
-01	(2.35) .093
-02	(3.95) .156

-VT

-RA-SD

**RUGGEDIZED**  
BY SAMTEC

• Screw down (right-angle)

**CREEPAGE AND CLEARANCE**

Selectively loading contacts achieves customer specific creepage and clearance requirements.  
Contact [asp@samtec.com](mailto:asp@samtec.com)

PET	NO. PINS PER ROW	LEAD STYLE	PLATING OPTION	TAIL OPTION	OTHER OPTION
	-02, -04, -06, -08	-01 = Use with (1.60 mm) .062" Thick PCB -02 = Use with (3.18 mm) .125" Thick PCB	-L = 10 μm (0.25 μm) Gold on contact, Matte Tin on tail -T = Matte Tin	-VT = Vertical -RA = Right-angle (Screw Down option required)	-SD = Screw Down (Right-angle only)

LEAD STYLE	A
-01	(2.35) .093
-02	(3.95) .156

-VT

-RA-SD

Due to technical progress, all designs, specifications and components are subject to change without notice.

[WWW.SAMTEC.COM](http://WWW.SAMTEC.COM)

All parts within this catalog are built to Samtec's specifications. Customer specific requirements must be approved by Samtec and identified in a Samtec customer-specific drawing to apply.