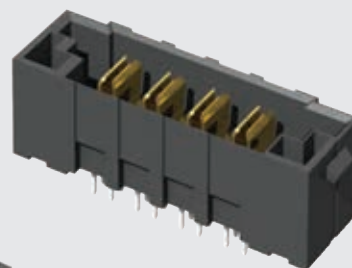


PES-08-02-L-VT



PET-04-01-L-VT

(6.35 mm) .250"

40 A HIGH POWER HEADER & SOCKET

PES Mates with:

PET

PET Mates with:

PES, PESS

SPECIFICATIONS

For complete specifications see www.samtec.com?PET or www.samtec.com?PES

Insulator Material:

Black LCP

Terminal Material:

Copper Alloy

Plating:

Sn or Au over 50 μ" (1.27 μm) Ni

Operating Temp Range:

-55 °C to +105 °C with Tin

-55 °C to +125 °C with Gold

Voltage Rating:

725 VAC/1025 VDC

Wiping Distance:

(4.14 mm) .163" Max

Standard Creepage:

(3.66 mm) .144"

Standard Clearance:

(3.31 mm) .130"

RoHS Compliant:

Yes

Lead-Free Solderable:

Yes

PET/PES	
PINS	CURRENT RATING (PER CONTACT)
1	58.7 A
2	48.5 A
3	41.1 A
4	38.0 A
8	29.4 A

RECOGNITIONS

For complete scope of recognitions see www.samtec.com/quality



FILE NO. E111394

ALSO AVAILABLE (MOQ Required)

- Locking Clip (Manual placement required)
- No Latch ears
- Other platings

OTHER SOLUTIONS

- Combination Signal/Power. See PES or PETC Series.

Note: Some sizes, styles and options are non-standard, non-returnable.

PES	NO. PINS PER ROW	LEAD STYLE	PLATING OPTION	TAIL OPTION	OTHER OPTION
	-02, -04, -06, -08	-01 = Use with (1.60 mm) .062" Thick PCB -02 = Use with (3.18 mm) .125" Thick PCB	-L = 10 μ" (0.25 μm) Gold on contact, Matte Tin on tail -T = Matte Tin	-VT = Vertical -RA = Right-angle (Screw Down option required)	-SD = Screw Down (Right-angle only)

LEAD STYLE	A
-01	(2.35) .093
-02	(3.95) .156

RUGGEDIZED BY SAMTEC

- Screw down (right-angle)

CREEPAGE AND CLEARANCE

Selectively loading contacts achieves customer specific creepage and clearance requirements.
Contact asp@samtec.com

PET	NO. PINS PER ROW	LEAD STYLE	PLATING OPTION	TAIL OPTION	OTHER OPTION
	-02, -04, -06, -08	-01 = Use with (1.60 mm) .062" Thick PCB -02 = Use with (3.18 mm) .125" Thick PCB	-L = 10 μ" (0.25 μm) Gold on contact, Matte Tin on tail -T = Matte Tin	-VT = Vertical -RA = Right-angle (Screw Down option required)	-SD = Screw Down (Right-angle only)

LEAD STYLE	A
-01	(2.35) .093
-02	(3.95) .156

-VT

-RA-SD

Due to technical progress, all designs, specifications and components are subject to change without notice.