

Features

- Low Loss
- Low Ripple
- High Rejection

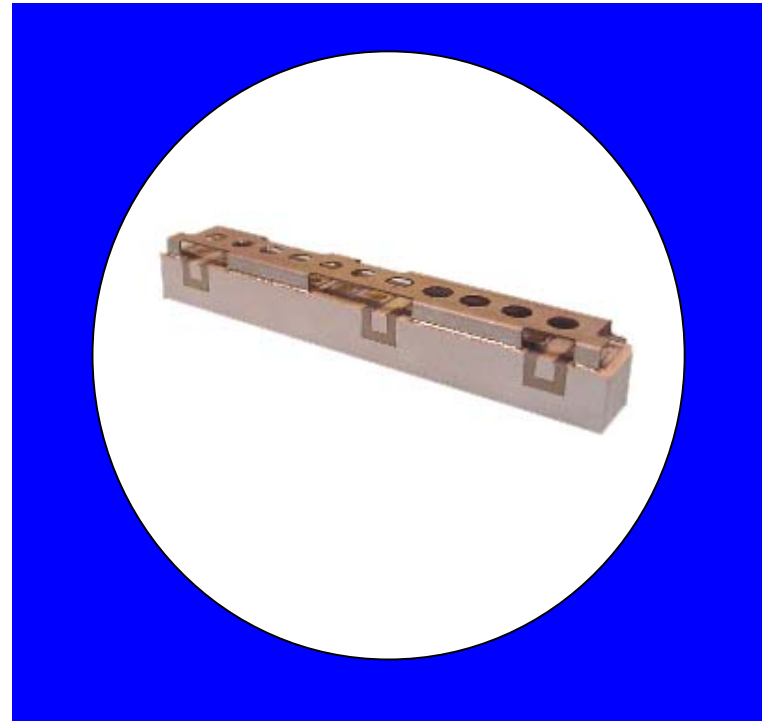
Description

Surface mount, silver (Ag) coated ceramic duplexer. Developed for use in InMarSat Infrastructure applications.

Weight: 22.1 grams typical

Material: Filter is composed of a ceramic block plated with Ag and a shield made of nickel silver plated steel.

Filter complies with RoHS standards.



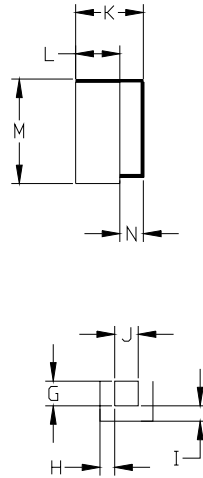
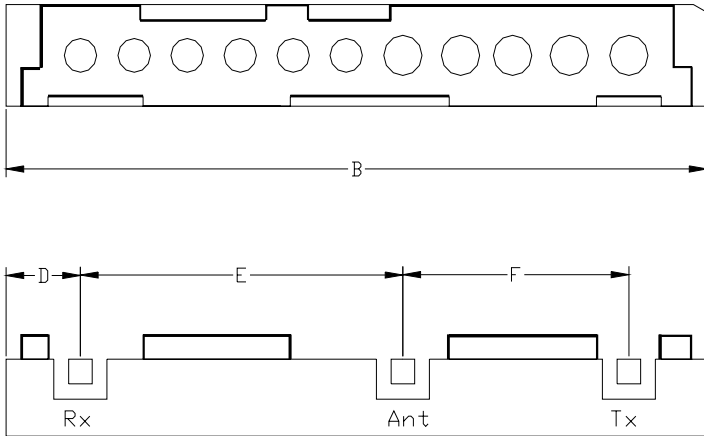
Electrical Specifications

Parameter	Frequency (MHz)	Typical @ 25C	Spec. over -30°C to +85°C
TX to Antenna Response			
Passband Insertion Loss	1626.5-1660.5	0.75 dB	1.0 dB max
Passband Ripple	1626.5-1660.5	0.2 dB	0.6 dB max
Passband Return Loss @ TX	1626.5-1660.5	14.5 dB	10.0 dB min
Attenuation:	1525-1559	14.2 dB	66.0 dB min
Antenna to RX Response			
Passband Insertion Loss	1525-1559	0.75 dB	1.0 dB max
Passband Ripple	1525-1559	0.15 dB	0.6 dB max
Passband Return Loss @ ANT	1525-1559	19.5 dB	10.0 dB min
Attenuation:	1626.5-1660.5	16.2 dB	65.0 dB min
Power into any port		5 Watt max	

Note: Supplier shall test each filter to the critical electrical specifications of the above table. Any subsequent audits may deviate from in value due to measurement repeatability among different test systems. Such deviations shall not exceed the following limits:

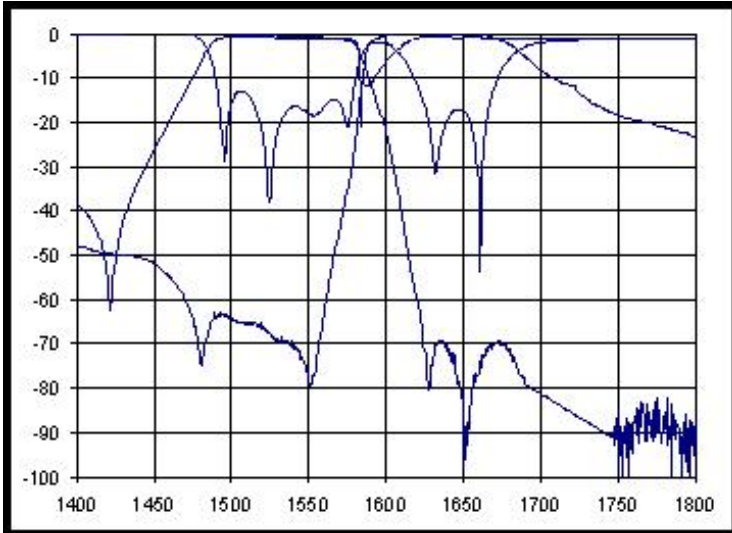
Specification Allowance	
Insertion Loss	0.1 dB
Return Loss	1.0 dB
Stopbands	1.0 dB

Mechanical Drawing

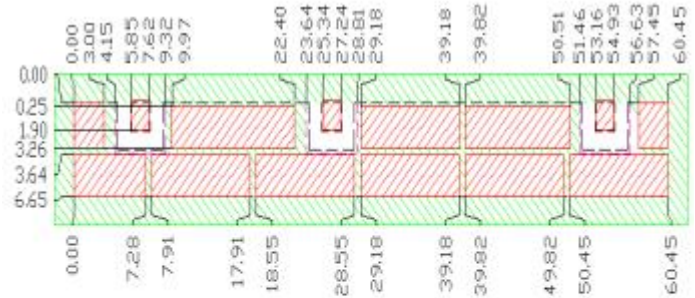


Dim	Nominal (mm)	Tolerance (mm) +/- or max
A		
B	60.8	max
C		
D	6.43	0.25
E	27.82	0.13
F	19.49	0.13
G	2.03	0.13
H	1.27	0.13
I	1.27	0.13
J	2.03	0.13
K	9.25	max
L	6.69	0.25
M	10.59	max
N	2.29	0.13

Electrical response



PCB Layout



--Filter outline
 ■ Exposed Conductor
 □ Solder resist over dielectric
 ■ Solder resist over Conductor

Packaging and Marking

DIMENSION	UNITS	SPECIFICATION
REEL DIAMETER	mm	TBD
REEL WEIGHT	kg	TBD
REEL QUANTITY	ea.	TBD

TBD

