



## Main

|                               |  |
|-------------------------------|--|
| Range of product              | Harmony XB5  |
| Product or component type     | Complete body/light block assembly   |
| Device short name             | ZB5  |
| Fixing collar material        | Plastic  |
| Sale per indivisible quantity | 1  |
| Connections - terminals       | Screw clamp terminals: $\leq 2 \times 1.5 \text{ mm}^2$ with cable end conforming to EN 60947-1<br>Screw clamp terminals: $\geq 1 \times 0.22 \text{ mm}^2$ without cable end conforming to EN 60947-1 |
| Light source                  | Protected LED  |
| Bulb base                     | Integral LED   |
| Light source colour           | Red  |

## Complementary

|  |   |
|--|---|
| CAD overall width                      | 1.18 in (30 mm)   |
| CAD overall height                     | 1.65 in (42 mm)   |
| CAD overall depth                      | 1.26 in (32 mm)   |
| Terminals description ISO n°1          | (X1-X2)PL   |
| Product weight                         | 0.05 lb(US) (0.022 kg)  |
| Tightening torque                      | 7.08...10.62 lbf.in (0.8...1.2 N.m) conforming to EN 60947-1                              |
| Shape of screw head                    | Cross Philips no 1<br>Cross pozidriv No 1<br>Slotted flat Ø 4 mm<br>Slotted flat Ø 5.5 mm |
| [Ui] rated insulation voltage          | 600 V (degree of pollution: 3) conforming to EN 60947-1                                   |
| [Uimp] rated impulse withstand voltage | 6 kV conforming to EN 60947-1   |
| Signalling type                        | Flashing  |
| [Us] rated supply voltage              | 110...120 V AC, 50/60 Hz  |
| Current consumption                    | 14 mA   |
| Service life                           | 100000 h at rated voltage and 25 °C   |
| Surge withstand                        | 1 kV conforming to IEC 61000-4-5  |
| Customizable                           | No  |

## Environment

|                                       |   |
|---------------------------------------|---|
| protective treatment                  | TH  |
| ambient air temperature for storage   | -40...158 °F (-40...70 °C)  |
| ambient air temperature for operation | -40...158 °F (-40...70 °C)  |
| electrical shock protection class     | Class II conforming to IEC 60536  |
| standards                             | EN/IEC 60947-1<br>EN/IEC 60947-5-1<br>EN/IEC 60947-5-4<br>JIS C 4520<br>UL 508<br>CSA C22.2 No 14 |
| product certifications                | BV<br>CSA<br>DNV<br>GL<br>LROS (Lloyds register of shipping)<br>RINA<br>UL listed                 |
| vibration resistance                  | 5 gn (f = 2...500 Hz) conforming to IEC 60068-2-6   |
| shock resistance                      | 30 gn (duration = 18 ms) half sine wave acceleration conforming to IEC 60068-2-27                 |

The information provided in this documentation contains general descriptions and/or technical characteristics of the products of the Schneider Electric group. It is not intended to be used for determining suitability or reliability of these products for specific user applications. It is the duty of any user or integrator to perform the appropriate and complete risk analysis, evaluation and testing of the products with respect to the relevant specific application or use thereof. Neither Schneider Electric Industries SAS nor any of its affiliates or subsidiaries shall be responsible or liable for misuse of the information contained herein.

|                                       |  |
|---------------------------------------|--|
|                                       | 50 gn (duration = 11 ms) half sine wave acceleration conforming to IEC 60068-2-27  |
| resistance to fast transients         | 2 kV conforming to IEC 61000-4-4   |
| resistance to electromagnetic fields  | 9.14 V/yd (10 V/m) conforming to IEC 61000-4-3   |
| resistance to electrostatic discharge | 6 kV on contact (on metal parts) conforming to IEC 61000-2-6<br>8 kV in free air (in insulating parts) conforming to IEC 61000-2-6 |
| electromagnetic emission              | Class B conforming to IEC 55011  |

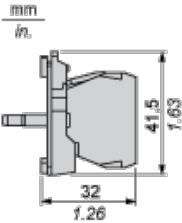
### Offer Sustainability

|  |  |
|--|--|
| WARNING: This product can expose you to chemicals including:   | WARNING: This product can expose you to chemicals including:   |
| Lead and lead compounds, which is known to the State of California to cause cancer and birth defects or other reproductive harm. | Lead and lead compounds, which is known to the State of California to cause cancer and birth defects or other reproductive harm. |
| For more information go to <a href="http://www.p65warnings.ca.gov">www.p65warnings.ca.gov</a>                                    | For more information go to <a href="http://www.p65warnings.ca.gov">www.p65warnings.ca.gov</a>                                    |

### Contractual warranty

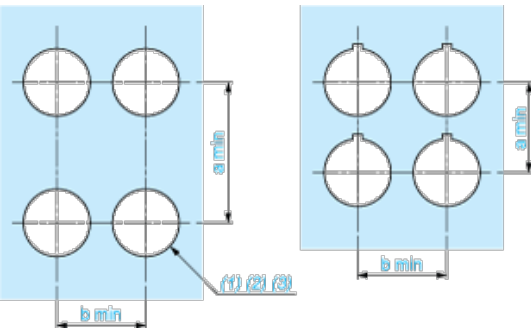
|                 |           |
|-----------------|-----------|
| Warranty period | 18 months |
|-----------------|-----------|

### Dimensions



### Panel Cut-out for Pushbuttons, Switches and Pilot Lights (Finished Holes, Ready for Installation)

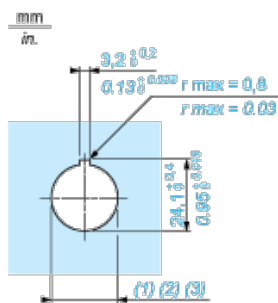
Connection by Screw Clamp Terminals or Plug-in Connectors or on Printed Circuit Board



- (1) Diameter on finished panel or support
- (2) For selector switches and Emergency stop buttons, use of an anti-rotation plate type ZB5AZ902 is recommended.
- (3) Ø22.5 mm recommended ( $\text{Ø}22.3_{0}^{+0.4}$ ) / Ø0.89 in. recommended ( $\text{Ø}0.88_{0}^{+0.016}$ )

| Connections                                   | a in mm | a in in. | b in mm | b in in. |
|---|---------|----------|---------|----------|
| By screw clamp terminals or plug-in connector | 40      | 1.57     | 30      | 1.18     |
| By Faston connectors                          | 45      | 1.77     | 32      | 1.26     |
| On printed circuit board                      | 30      | 1.18     | 30      | 1.18     |

### Detail of Lug Recess



- (1) Diameter on finished panel or support
- (2) For selector switches and Emergency stop buttons, use of an anti-rotation plate type ZB5AZ902 is recommended.
- (3) Ø22.5 mm recommended ( $\text{Ø}22.3 \text{ }_0^{+0.4}$ ) / Ø0.89 in. recommended ( $\text{Ø}0.88 \text{ in. }_0^{+0.016}$ )