

MICRO SWITCH

FREERPORT ILLINOIS, U.S.A
A DIVISION OF HONEYWELL
FED. MFG. CODE 91929

ASSEMBLY - PUSHBUTTON SWITCH

CATALOG LISTING
IPB542

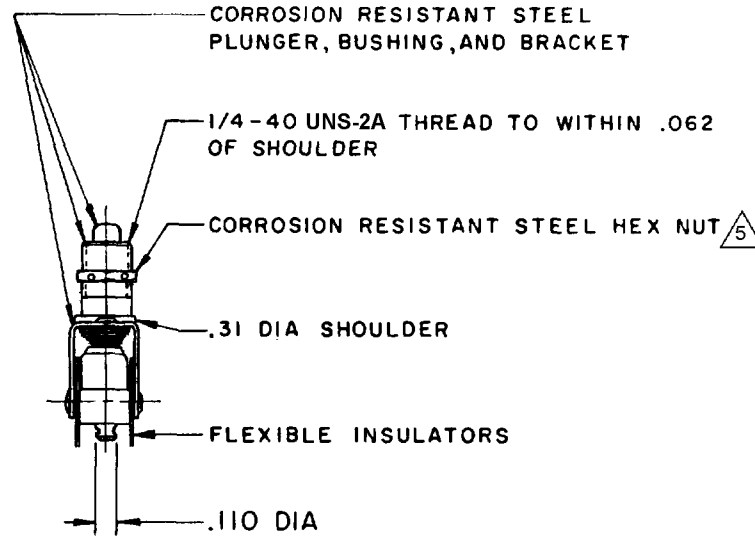
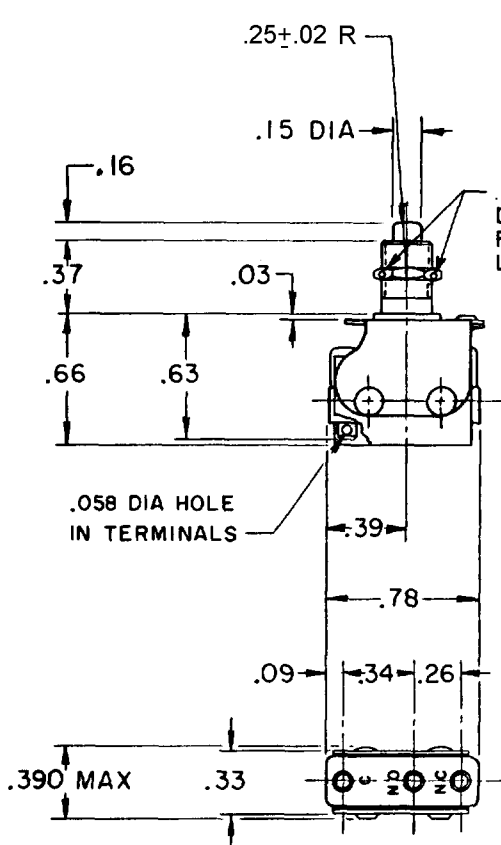
CATALOG LISTING
IPB542
PAGE 1 OF 1
RELEASE NO. PR-7047
REPLACES

M
DRAWING NUMBER
8
ISSUE

REVISIONS

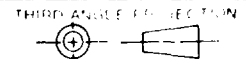
A	PR 7047	CSL	29 MAR 78
B	CO 53488	WJM	15 JUL 83
C	201143	CSL	1 SEP 00
D	201411	CSL	2 OCT 00
E	0018502	PM	27 FEB 06

FO-52848-A
DRAWN
S L B 23 MAR 78
CHECK
C E B 29 MAR 78



- NOTES
- 1 - UNIT INCLUDES "11SM" BASIC SWITCH
 - 2 - TERMINALS ARE PLATED FOR SOLDERING
 - 3 - RECOMMENDED FOR MANUAL OPERATION ONLY
 - 4 - FOR USE IN TEMPERATURE RANGE -65°F TO +400°F
- 5 MOUNTING HARDWARE FURNISHED UNASSEMBLED

THIS DRAWING COVERS A PROPRIETARY ITEM AND IS THE PROPERTY OF MICRO SWITCH, A DIVISION OF HONEYWELL. THIS DRAWING IS NOT TO BE COPIED OR USED WITHOUT THE APPROVAL OF MICRO SWITCH.



CHARACTERISTICS	ELECTRICAL DATA	SCALE FULL
OPERATING FORCE ----- 2 LBS MAX	CONTACT ARRANGEMENT S P D T	DO NOT SCALE PRINT
OVERTRAVEL FORCE ----- 2.5 LBS MAX	250 VAC ----- 5 AMP	TOLERANCES
RELEASE FORCE ----- 2 OZ MIN	30 VOLTS DC RATING	APPLY TO DESIGN UNITS. CONVERSIONS ARE ONLY FOR REFERENCE UNLESS NOTED. TOLERANCES ARE ±
OVERTRAVEL ----- .100 MIN	INDUCTIVE ----- SEA LEVEL --- 3 AMP	DIM. TOL. DIM. TOL.
DIFFERENTIAL TRAVEL ----- .031 MAX	RESISTIVE ----- SEA LEVEL --- 5 AMP	NO PLACES X 1/04
	MAXIMUM INRUSH ----- 24 AMP	ONE PLACE X,X 0.4/0.16 X X 0.8/0.03
		TWO PLACES X,XX 0.15/0.09 X XX 0.38/0.015
		THREE PLACES X,XXX 0.13/0.005 X XXX 0.13/0.005
		ANGLES
		DESIGN UNITS <input type="checkbox"/> METRIC <input checked="" type="checkbox"/> US CUSTOMARY
		WEIGHT