

# Customer Information Sheet

DRAWING No.: M20-610XX45

SHEET 2 OF 2

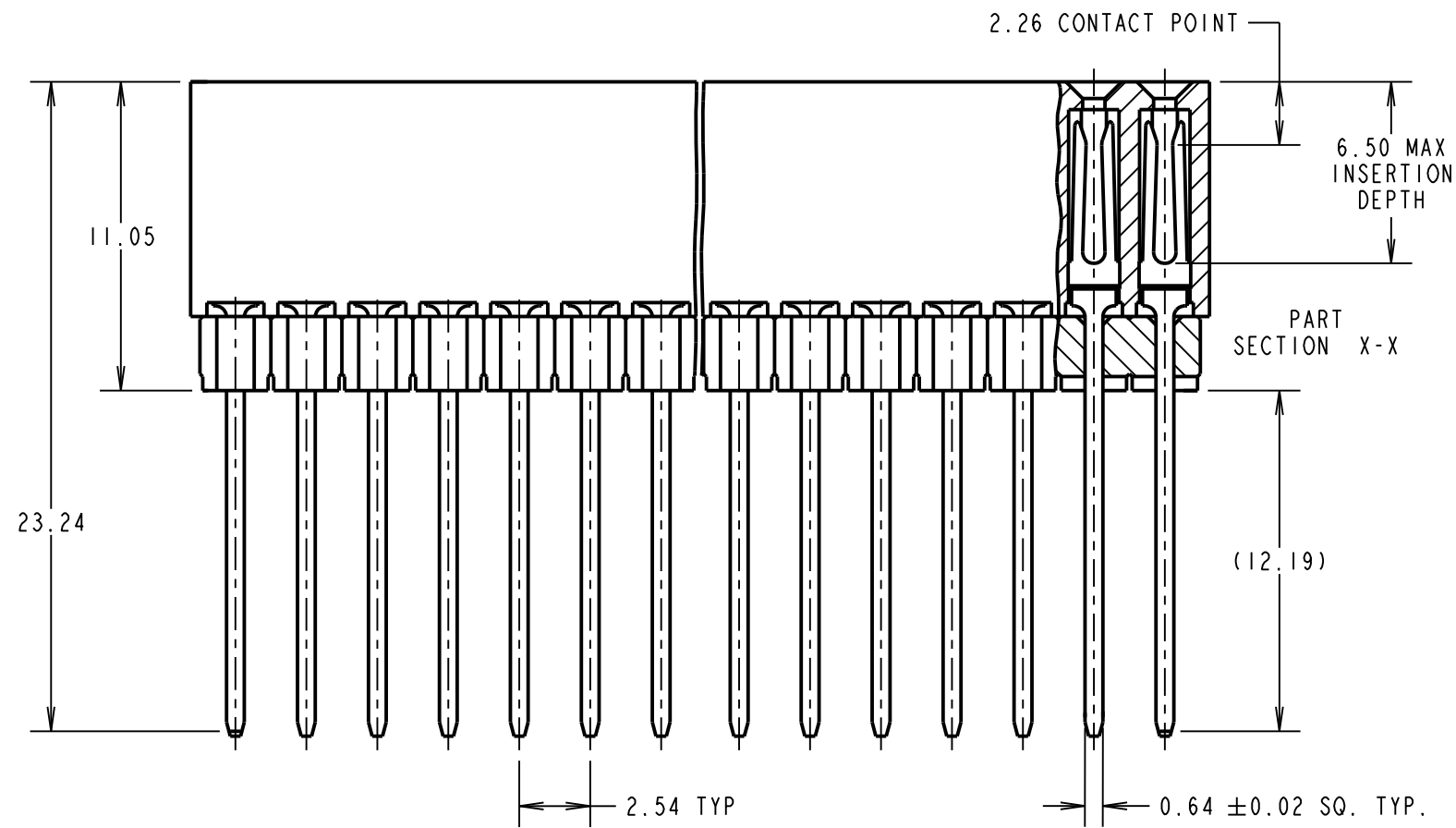
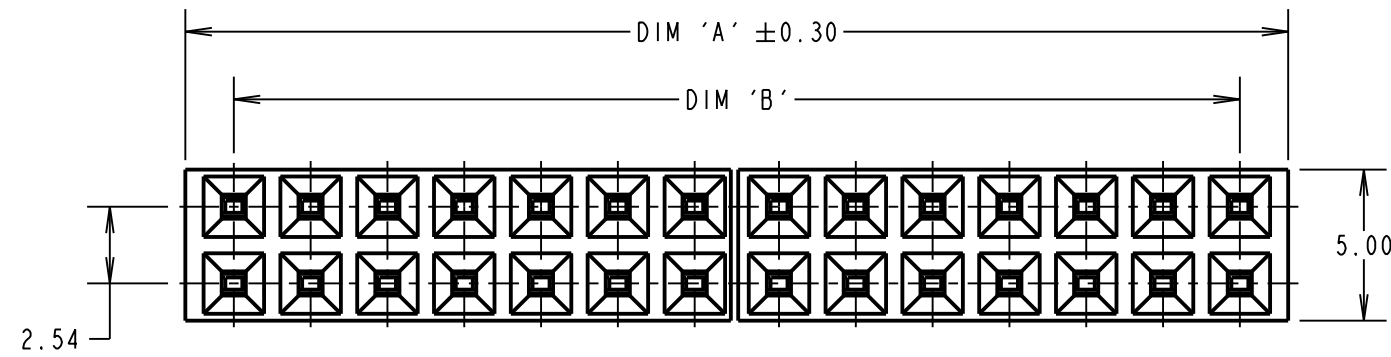
IF IN DOUBT - ASK

©

NOT TO SCALE

THIRD ANGLE PROJECTION

ALL DIMENSIONS IN mm



NOTES:  
1. ALL TOLERANCES ARE  $\pm 0.20$  UNLESS OTHERWISE STATED.

**SPECIFICATION:**

**MATERIAL:**

MOULDING = HIGH TEMP NYLON 6T UL94V-0, BLACK  
CONTACTS = PHOSPHOR BRONZE

**FINISH:**

CONTACTS = 0.08 $\mu$ m GOLD OVER NICKEL

**ELECTRICAL:**

CURRENT RATING = 3A MAX  
CONTACT RESISTANCE = 30m $\Omega$  MAX  
INSULATION RESISTANCE = 5,000M $\Omega$  MIN  
VOLTAGE PROOF = 1,000V AC FOR ONE MINUTE

**MECHANICAL:**

INSERTION FORCE (PER CONTACT) = 2.0N/MAX  
WITHDRAWAL FORCE (PER CONTACT) = 0.3N MIN

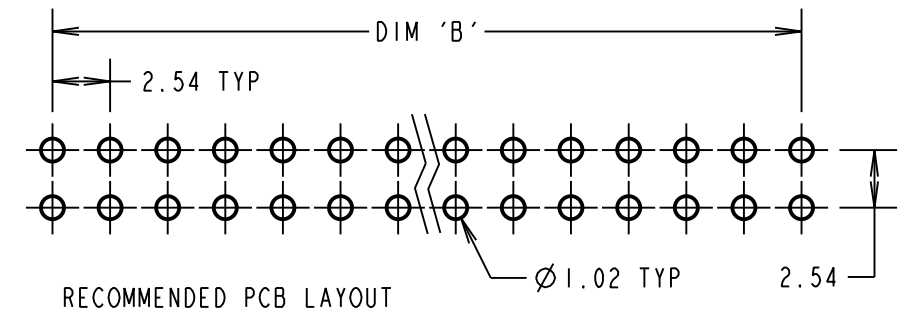
**ENVIRONMENTAL:**

TEMPERATURE RANGE = -55°C TO +105°C

**PACKING:**

TUBE

FOR COMPLETE SPECIFICATIONS, SEE COMPONENT SPECIFICATION C039XX (LATEST ISSUE)



| No. OF CONTACTS PER ROW | DIM 'A' | DIM 'B' |
|-------------------------|---------|---------|
| 20                      | 51.46   | 48.26   |
| 32                      | 81.94   | 78.74   |

**HARWIN**

www.harwin.com  
technical@harwin.com

THIS DRAWING AND ANY INFORMATION OR DESCRIPTIVE MATTER SET OUT HEREON ARE CONFIDENTIAL AND COPYRIGHT PROPERTY OF THE HARWIN GROUP AND MUST NOT BE DISCLOSED, LOANED, COPIED OR USED FOR MANUFACTURING, TENDERING OR FOR ANY OTHER PURPOSE WITHOUT THEIR WRITTEN PERMISSION.

**TOLERANCES**  
X =  $\pm 1$ mm  
X.X =  $\pm 0.50$ mm  
X.XX =  $\pm 0.10$ mm  
X.XXX =  $\pm 0.01$ mm  
ANGLES =  $\pm 5^\circ$   
UNLESS STATED

**MATERIAL:**

SEE ABOVE

**FINISH:**

SEE ABOVE

**S/AREA:**

mm<sup>2</sup>

**TITLE:**

PCI04 CONNECTOR (STACKTHROUGH)

**DRAWING NUMBER:**

M20-610XX45

|                      |      |          |        |
|----------------------|------|----------|--------|
| FM                   | 13   | 16.04.18 | 21227  |
| NAME                 | ISS. | DATE     | C/NOTE |
| APPROVED: F. MCGOWAN |      |          |        |
| CHECKED: M. PLESTED  |      |          |        |
| DRAWN: W. J. BOURNE  |      |          |        |
| CUSTOMER REF.:       |      |          |        |
| ASSEMBLY DRG:        |      |          |        |