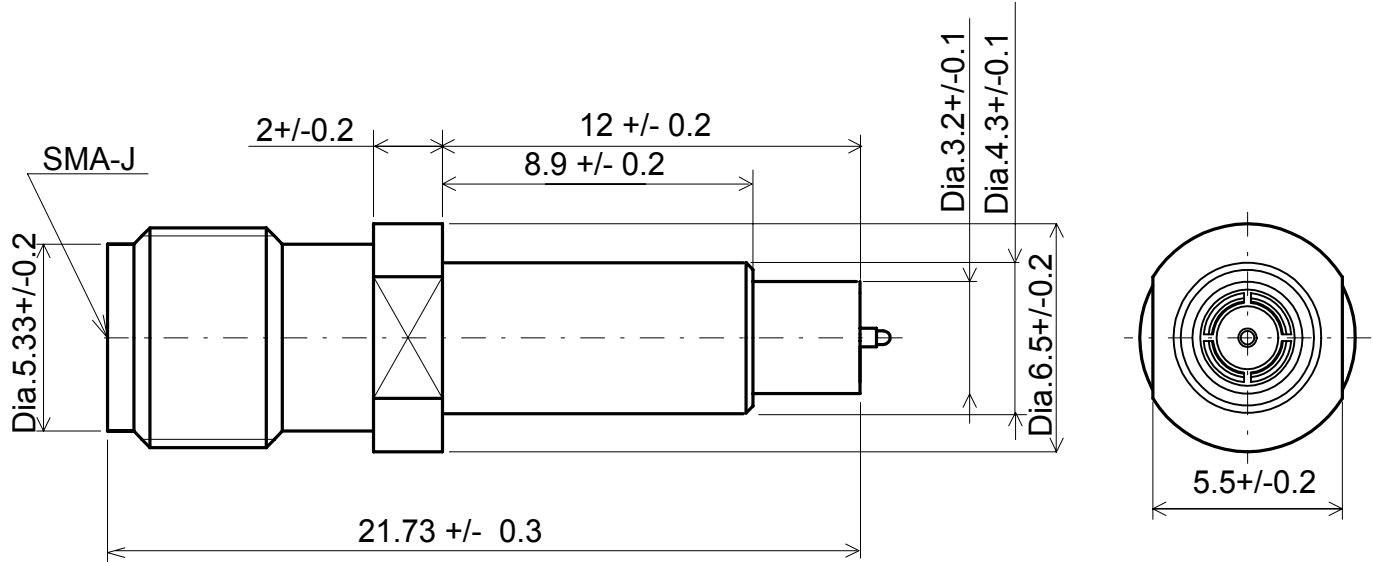


**SPECIFICATION**

**1. MECHANICAL**



**2. RATING:**

Item	Specification
Voltage Rating	250V r.m.s. maximum
Nominal Frequency Range	DC to 6GHz
Nominal Impedance	50Ω
Temperature Rating	-40°C to +90°C
Insulation Resistance	500 MΩ minimum
Withstanding Voltage	No evidence of breakdown
Initial Contact Resistance (without conductor resistance)	Center contact 25.0mΩmax. Outer contact 20.0mΩmax.
Voltage Standing Wave Ratio (V.S.W.R.)	Meet the requirements of following spec. 1.3max.(DC to 3GHz) 1.6max.(3GHz to 6GHz)
A> Insertion loss	0.4dBmax.(DC~3GHz) 0.6dBmax.(3GHz ~6GHz)
Durability	10K cycles
Engage and disengage force. (PROBE side only)	a. Engagement 30N maximum b. Disengagement 5N minimum 40N maximum