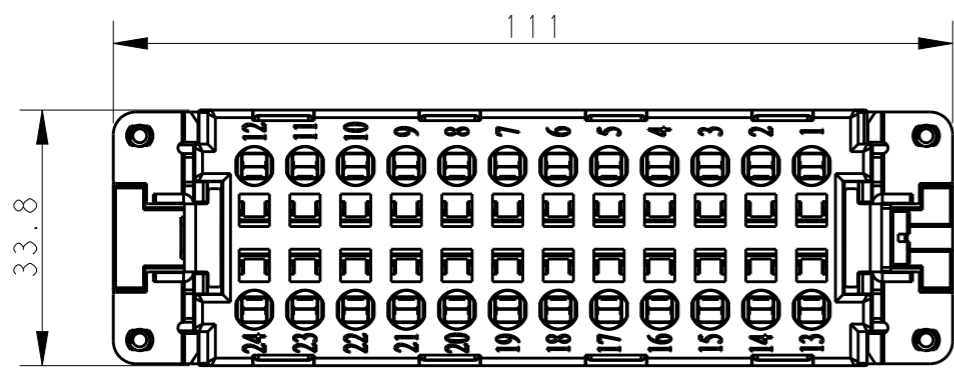
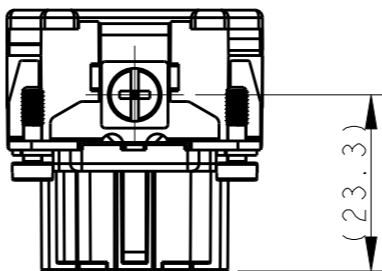
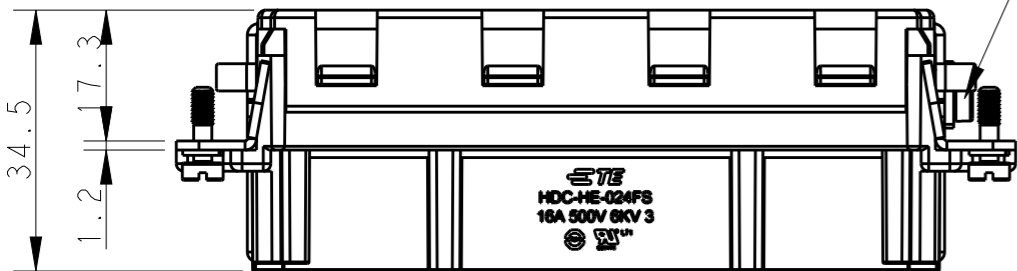


THIS DRAWING IS UNPUBLISHED. RELEASED FOR PUBLICATION 20
 © COPYRIGHT 20 BY - ALL RIGHTS RESERVED.

REVISIONS					
P	LTR	DESCRIPTION	DATE	DWN	APVD
	A	INITIAL	05Jan2015	GY	CW
	A1	ECR-15-004309	24Mar2015	GY	CW
	B	ECR-15-013759	26Sep2015	DW	CW

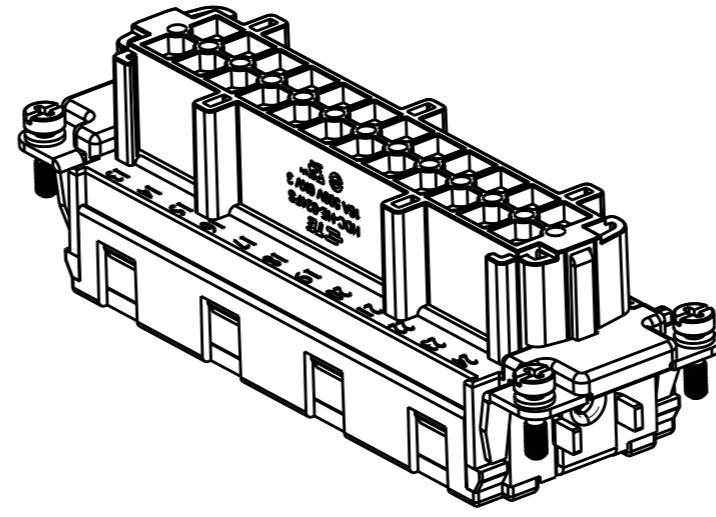
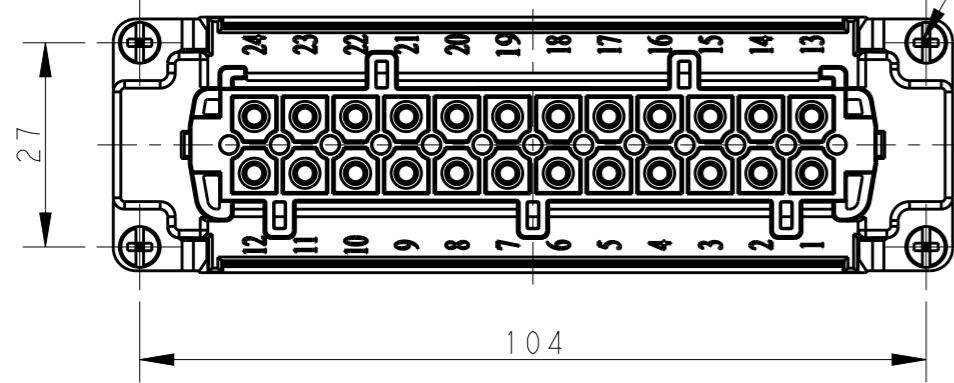


M4 screw, recommended tightening torque 1.2Nm

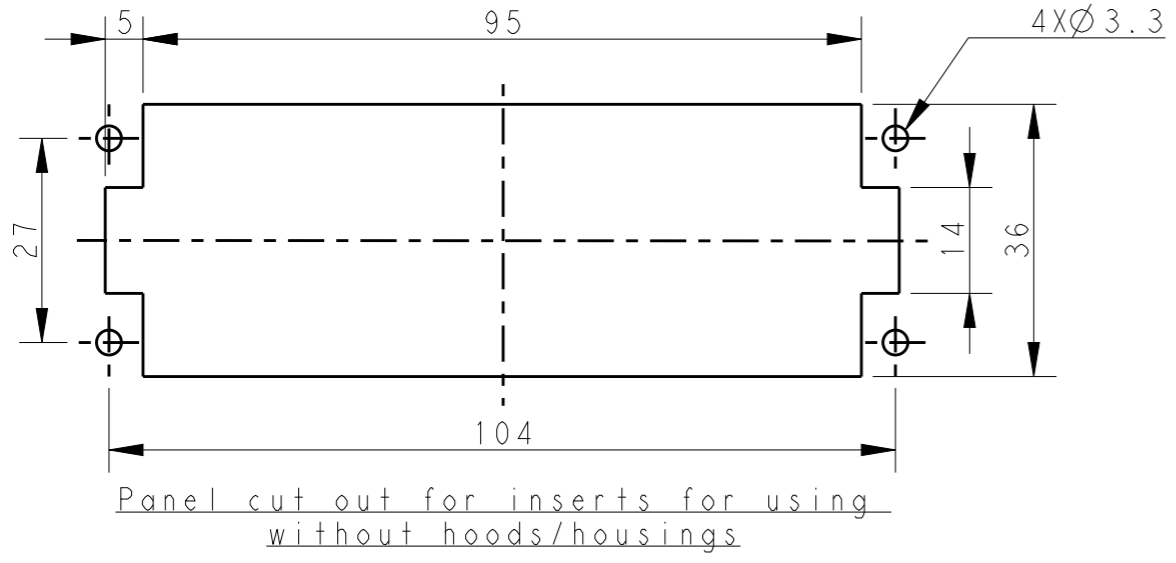


NOTES:
 1. TECHNICAL CHARACTERISTICS:
 INSULATION MATERIAL: PC
 RATED VOLTAGE: 500V
 RATED CURRENT: 16A
 INSULATION RESISTANCE: >=400MΩ
 RATED IMPULSE VOLTAGE: 6KV
 POLLUTION DEGREE: 3
 FLAMMABILITY: UL94V-0
 MATING CYCLES: 500 CYCLES
 OPERATION TEMPERATURE: -40°C~+125°C
 WIRE RANGE: 0.5mm²~2.5mm² (AWG20-AWG14)
 CONTACT TYPE: SPRING CLAMP

4 X M3 screw, recommended tightening torque 0.5Nm



注释:
 1. 技术参数:
 绝缘材料: PC
 额定电压: 500V
 额定电流: 16A
 绝缘电阻: >=400MΩ
 脉冲电压: 6KV
 污染等级: 3
 阻燃等级: UL94V-0
 插拔次数: 500 次
 工作温度: -40°C~+125°C
 接线范围: 0.5mm²~2.5mm² (AWG20-AWG14)
 接线类型: 弹片压接



HE-024-FS	T2040243201-000
DESCRIPTION	PART NUMBER

THIS DRAWING IS A CONTROLLED DOCUMENT.		DWN	18Aug2014		 TE Connectivity
		CHK	18Aug2014		
		APVD	18Aug2014		
		PRODUCT SPEC	108-137044		
DIMENSIONS: mm		TOLERANCES UNLESS OTHERWISE SPECIFIED:		NAME	
		0 PLC	±-		HE-024-FS
		1 PLC	±-		
		2 PLC	±-		
		3 PLC	±-		
		4 PLC	±-		
		ANGLES	±-		
MATERIAL		FINISH		SIZE	
				A300779	
				CAGE CODE	
				DRAWING NO	
				RESTRICTED TO	
				-	
				SCALE	
				1:1	
				SHEET	
				1 OF 1	
				REV	
				B	