

# P6121

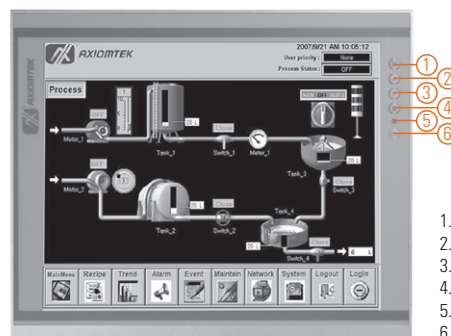
12.1" XGA TFT Industrial LCD Monitor

## Features

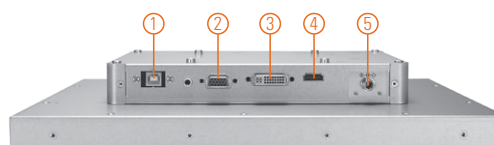
- 12.1" XGA TFT LED backlight LCD
- NEMA 4/12 (IP65)-compliant flat panel monitor
- Supports panel mount, wall mount and VESA arm
- Resistive touchscreen
- Full range screw-type (locked) AC-in or 24V DC-in (option)
- HDMI, DIV-D and VGA with multi-signal inputs



▲ Ultra-slim mechanism design



1. Menu
2. SEL+
3. SEL-
4. Exit
5. Power LED
6. Power switch



1. T/S port
2. VGA
3. DVI-D
4. HDMI
5. Power

## Introduction

The P6121 is an ultra slim industrial LCD monitor, which adopts 12.1-inch 500 nits XGA LED backlight LCD display and supports multi-signal interfaces including DVI, VGA and HDMI. Featuring NEMA 4/12 & IP65-rated compliant front bezel, screw-type adaptor plug design, and 24V DC-in means it is fit for all kinds of industrial environments. Moreover, the P6121 supports panel mount, wall mount or VESA FPMPMI (Video Electronics Standards Association Flat Panel Monitor Physical Mounting Interface) mounting. With the compact mechanism design, users can enjoy free from space constraint. It is especially suitable for POI/POS, excellent HMI and all kinds of heavy-duty industrial fields.

## Specifications

|                 |   |
|-----------------|---|
| Front Bezel     | NEMA 4/12 (IP65)-compliant, metal front bezel   |
| Mounting        | Panel mount, wall mount or VESA arm<br>FPMPMI mounting (video electronics standards association flat panel monitor physical mounting interface)   |
| LCD Panel       | Display 12.1" XGA TFT LCD<br>Max. Resolution 1024 x 768<br>Max. Colors 16.2 M<br>Active Area (mm) 245.76 x 184.32<br>Pixel Pitch (mm) 0.24 x 0.24<br>Response Time 16ms<br>Backlight LED backlight<br>Backlight MTBF 30,000 hrs<br>Viewing Angle (H/V) 160°/140°<br>Contrast Ratio 700 (TYP.)<br>Brightness (cd/m <sup>2</sup> ) 500 nits |
| Display Control | OSD (on screen display)   |
| Display Mode    | VGA 640 x 350 (70Hz), VGA 640 x 480 (60/72/75Hz),<br>VGA 720 x 400 (70Hz), SVGA 800 x 600 (60/72/75Hz),<br>XGA 1024 x 768 (60/72/75Hz)  |

## Specifications

|                    |  |
|--------------------|--|
| Input Signal       | DVI-D<br>VGA<br>HDMI<br>Touchscreen: Serial RS-232 or USB interface  |
| I/O Connectors     | 1 x RS-232 or USB for touchscreen version<br>1 x DVI-D<br>1 x VGA<br>1 x HDMI<br>1 x Screw-type DC power input                           |
| Power Adapter      | Screw-type external AC / DC power adapter  |
| Power Consumption  | 15 W   |
| Touchscreen        | Thickness Resistive: 3.2 mm  |
|                    | Light Transmission Resistive: 80%  |
|                    | Power Consumption Resistive: +5V @ 100mA   |
|                    | Touch Life Resistive: 35 million touches<br>Controller interface: RS-232 D-type 9-pin male connector or USB                              |
| Dimensions         | 311.81 mm (12.28") (W) x 54.95 mm (2.16") (H) x 250.31 mm (9.85") (D)  |
| Packing Dimensions | 490 mm (19.29") (W) x 166 mm (6.53") (19.29") (H) x 502 mm (19.76") (D)  |
| Weight (net/gross) | 2.35 kg (5.18 lbs)/2.8 kg (6.17 lbs)   |
| Environment        | Operating temperature: 0°C ~ +55°C (+32°F ~ +131°F)<br>Relative humidity: 20% ~ 90% @ +40°C, non-condensing                              |
| Packing List       | 1 x VGA cable<br>1 x RS-232 or USB cable for touchscreen (for touch version)<br>1 x Audio cable<br>1 x EU/US power cord (for AC version) |
| Certificate        | CE   |

## Ordering Information

|                                 |                    |                     |
|---------------------------------|--------------------|---------------------|
| AC Power                        | Resistive (RS-232) | P6121PR-AC-RS-US-EU |
|                                 | Resistive (USB)    | P6121PR-AC-U-US-EU  |
|                                 | Glass              | P6121PG-AC-US-EU    |
| 24VDC Power (default)           | Resistive (RS-232) | P6121PR-24VDC-RS    |
|                                 | Resistive (USB)    | P6121PR-24VDC-U     |
| 12VDC Power (by jumper setting) | Resistive (RS-232) | P6121PR-24VDC-RS    |
|                                 | Glass              | P6121PG-24VDC       |

## Optional Accessories

|              |                 |
|--------------|-----------------|
| 5946L203800E | HDMI cable      |
| 59461713400E | DVI cable       |
| 82261210000E | Panel mount kit |
| 82231770050E | Wall mount kit  |
| E226171106   | Desktop stand   |

## Dimensions

