

MICRO SWITCH

FREEDPORT, ILLINOIS, U.S.A.
A DIVISION OF HONEYWELL

FED. MFG. CODE 91929

MAGNET-ACTUATOR

CATALOG LISTING

102MG15-BP

THIS DRAWING COVERS A PROPRIETARY ITEM AND IS THE PROPERTY OF MICRO SWITCH, A DIVISION OF HONEYWELL. THIS DRAWING IS NOT TO BE COPIED OR USED WITHOUT THE APPROVAL OF MICRO SWITCH.

102MG15-BP

M

DRAWING NUMBER

ISSUE

3

REPLACES

RELEASE NO. P R-7836

CHECK

REVISIONS

A	CO-50564	K A G	10 DEC 81
B	CO64093	J A S	24 AUG 88

CHECK

23 APR 79

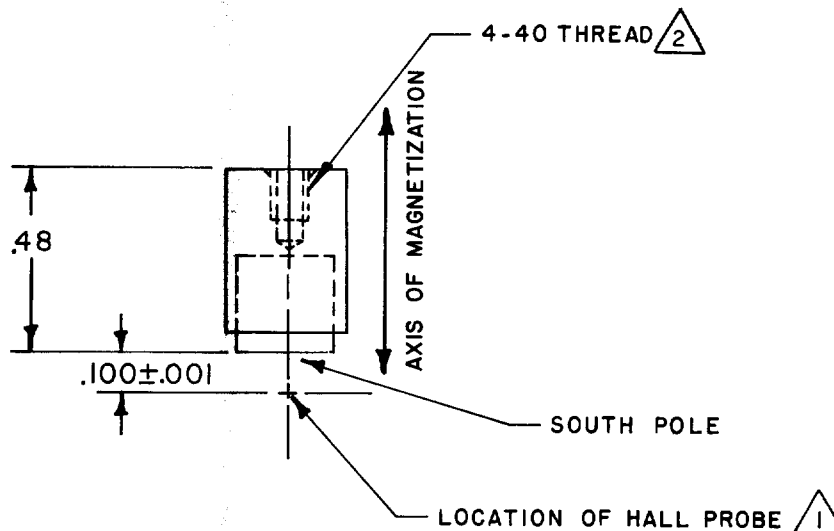
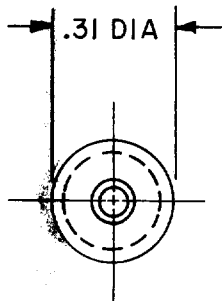
CHECK

20 APR 79

O-50378-2A

DRAWN

CSM



NOTES

- 1 READING IN GAUSS AT HALL ELEMENT OF GAUSS METER PROBE AT $.100 \pm .001$ DISTANCE WILL BE 480 GAUSS MINIMUM & 600 GAUSS MAX.
- 2 3 1/2 FULL THREADS MINIMUM

SCALE 2:1	
DO NOT SCALE PRINT	
UNLESS OTHERWISE NOTED	
DIMENSIONS ARE IN INCHES	
TOLERANCES ARE:	
ONE PLACE (.0)	±.030
TWO PLACE (.00)	±.015
THREE PLACE (.000)	±.005
ANGLES	±.005
WEIGHT	