

THIS DRAWING IS UNPUBLISHED. RELEASED FOR PUBLICATION
 © COPYRIGHT BY TYCO ELECTRONICS CORPORATION. ALL RIGHTS RESERVED.

LOC		DIST		REVISIONS			
P	LTR	DESCRIPTION	DATE	DWN	APVD		
AD	00	A	ECO-06-001097	17JUL06	BSV	MS	

SPECIFICATIONS:

MATERIAL:
 BASE-PPS UL94V-0, BLACK.
 COVER-PPS UL94V-0, BLACK.
 ACTUATOR-PA6T UL94V-0, 30% GF, RED.
 FIXED CONTACT/TERMINAL-COPPER ALLOY, PLATE-GOLD/NICKEL.
 MOVING CONTACT-COPPER ALLOY, PLATE-GOLD/NICKEL.
 BALL-STAINLESS STEEL.
 BALL SUPPORT PLATE-COPPER ALLOY.
 DETENT SPRING-STAINLESS STEEL.

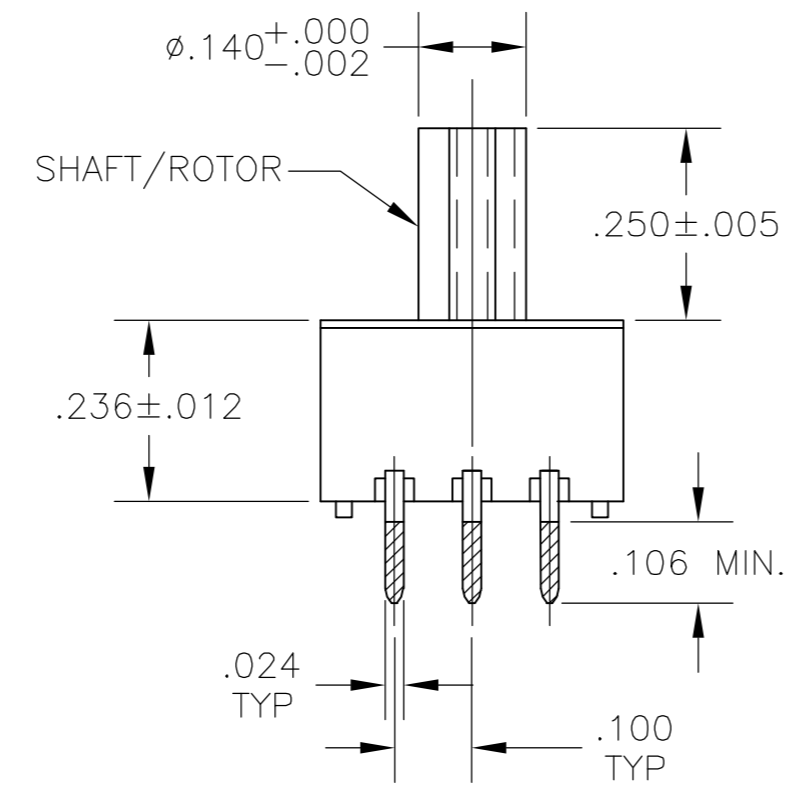
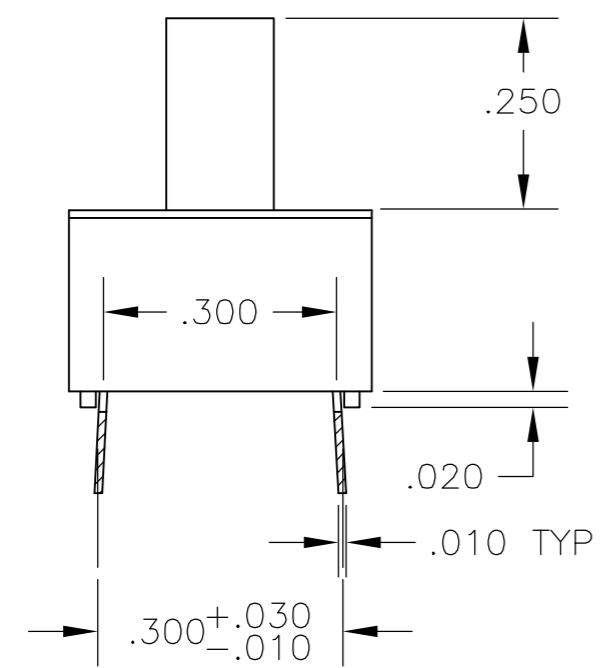
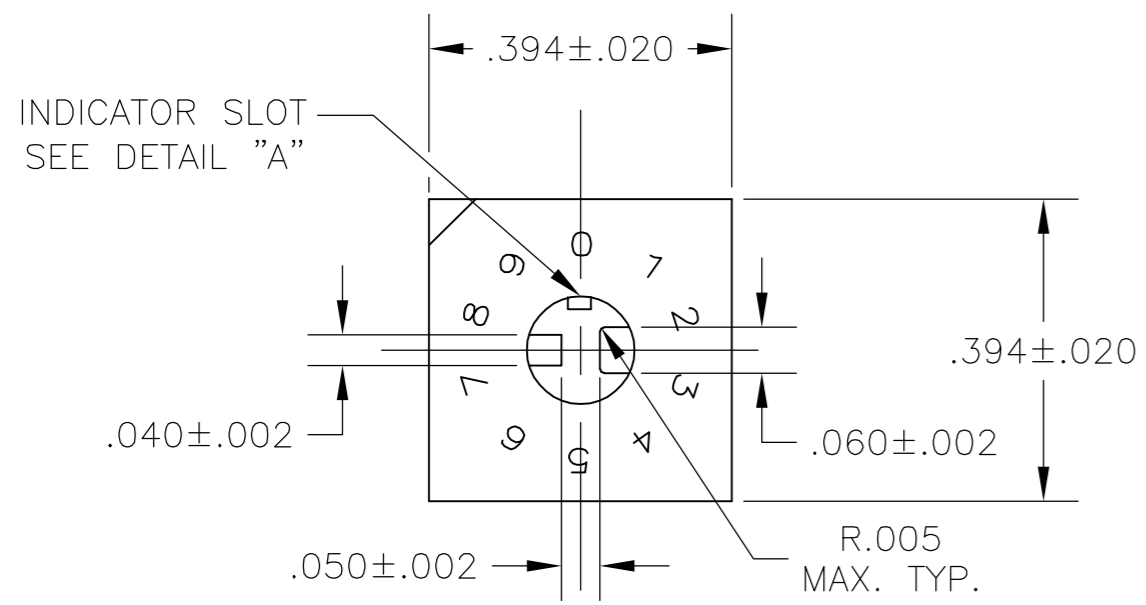
ELECTRICAL:
 CONTACT RATING SWITCHING-0.4 VA @ 20V DC.
 INITIAL CONTACT RESISTANCE-50 MILLIOHMS MAX.
 INSULATION RESISTANCE-100 MEGOHMS MIN. @ 100V DC.
 DIELECTRIC STRENGTH-300V AC RMS @ SEA LEVEL.
 LIFE-10,000 ROTATIONS.

MECHANICAL:
 OPERATING FORCE-6 OZ -IN.(NOMINAL)

ENVIRONMENTAL:
 OPERATING TEMPERATURE: -30 TO +85 DEGREES C.
 STORAGE TEMPERATURE: -45 TO +100 DEGREES C.
 CLEANING-AQUEOUS OR SOLVENT.
 SOLDER HEAT RESISTANCE-265 DEGREES C±3 DEGREES C WITHIN 8 SECONDS±2 SECONDS
 SOLDERABILITY- PER JIS-C-0050 & JIS-C-00053

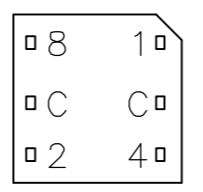
NOTES:

- ALL MATERIALS AND FINISHES SHALL COMPLY WITH EU DIRECTIVE 2002/95/EC OF 27JAN2003 (ROHS)
- SPECIAL ONE PIECE PLAIN SHAFT WITH INDICATOR SLOT .015X.015 AS SHOWN IN DETAIL "A".
- COMMON TERMINALS ARE CONNECTED INTERNALLY.
- SHAFT IS STANDARD RED COLOR AND INDICATOR SLOT IS WHITE COLOR.



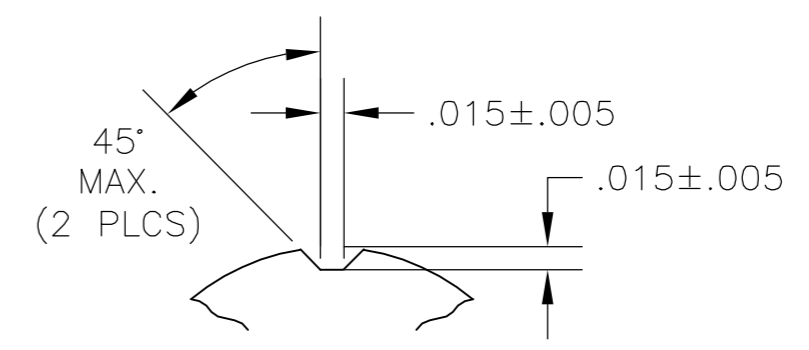
DRM
PC MOUNT

TERMINAL IDENTIFICATION FOR DR SERIES ONLY
(VIEWED FROM BOTTOM OF SWITCH)

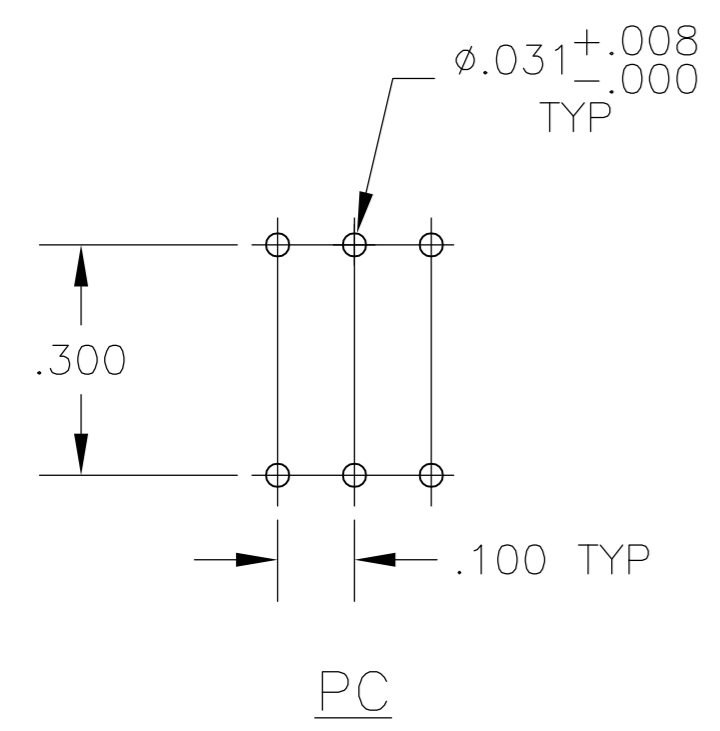


10-POSITION, BCD SEE NOTE 2

POS	0	1	2	3	4	5	6	7	8	9
C	X	X	X	X	X	X	X	X	X	X
1		X		X		X		X		X
2			X	X			X	X		
4					X	X	X	X		
8									X	X



DETAIL "A"



DRM91388F04	1825473-1
ALCO P/N	TYCO P/N

THIS DRAWING IS A CONTROLLED DOCUMENT.		DWN BSV	20JUN05	tyco Tyco Electronics Corporation	
DIMENSIONS: INCHES		CHK MSS		Harrisburg, Pa 17105-3608	
TOLERANCES UNLESS OTHERWISE SPECIFIED:		APVD -		NAME	
0 PLC ± -		PRODUCT SPEC		ROTARY DIP SWITCH	
1 PLC ± -		APPLICATION SPEC		DRM10 SPECIAL	
2 PLC ± -				SIZE	CAGE CODE
3 PLC ± .010				A2	00779
4 PLC ± -				DRAWING NO	RESTRICTED TO
ANGLES ± 1°				C=1825473	-
MATERIAL SEE SPECIFICATIONS	FINISH SEE SPECIFICATIONS	WEIGHT -		SCALE	SHEET
				4:1	1 OF 1
CUSTOMER DRAWING				REV	A

1825473