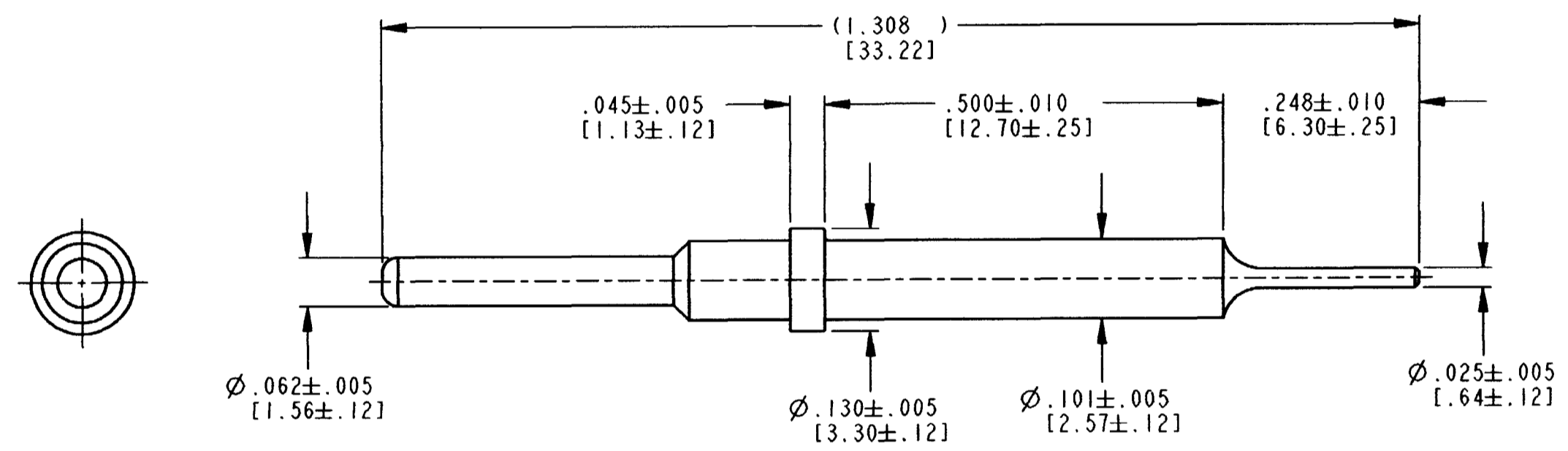


REV NC	0460-229-16**	REVISIONS		
SYM	DESCRIPTION	DATE	APPROVED	
NC	NEW RELEASE PER E.O. PI9398	11-17-06	ROR	



- NOTES:
1. DIMENSIONS ARE IN INCHES [mm].
  2. WHEN \*\* = 141: PLATING IS NICKEL.
  3. FOR CONTACT APPLICATION, SEE DRAWING 0425-202-0000.

SIGNATURE & DATE		CONTACT PIN SIZE 16 EXTENSION	EP	MATL. CODE
DR	J. APOSTOL 24OCT2006		The Deutch Company	
CHK	[Signature] 11/2/06		DEUTSCH I.P.D. 3850 INDUSTRIAL AVE. HEMET, CALIF. 92545	
PE	[Signature] 11/21/06		B 0460-229-16**	
APPD	R. Reed 11-17-06	ENVELOPE	DWG SIZE	CODE 11139
SCALE	NONE	WT	SHEET   OF	