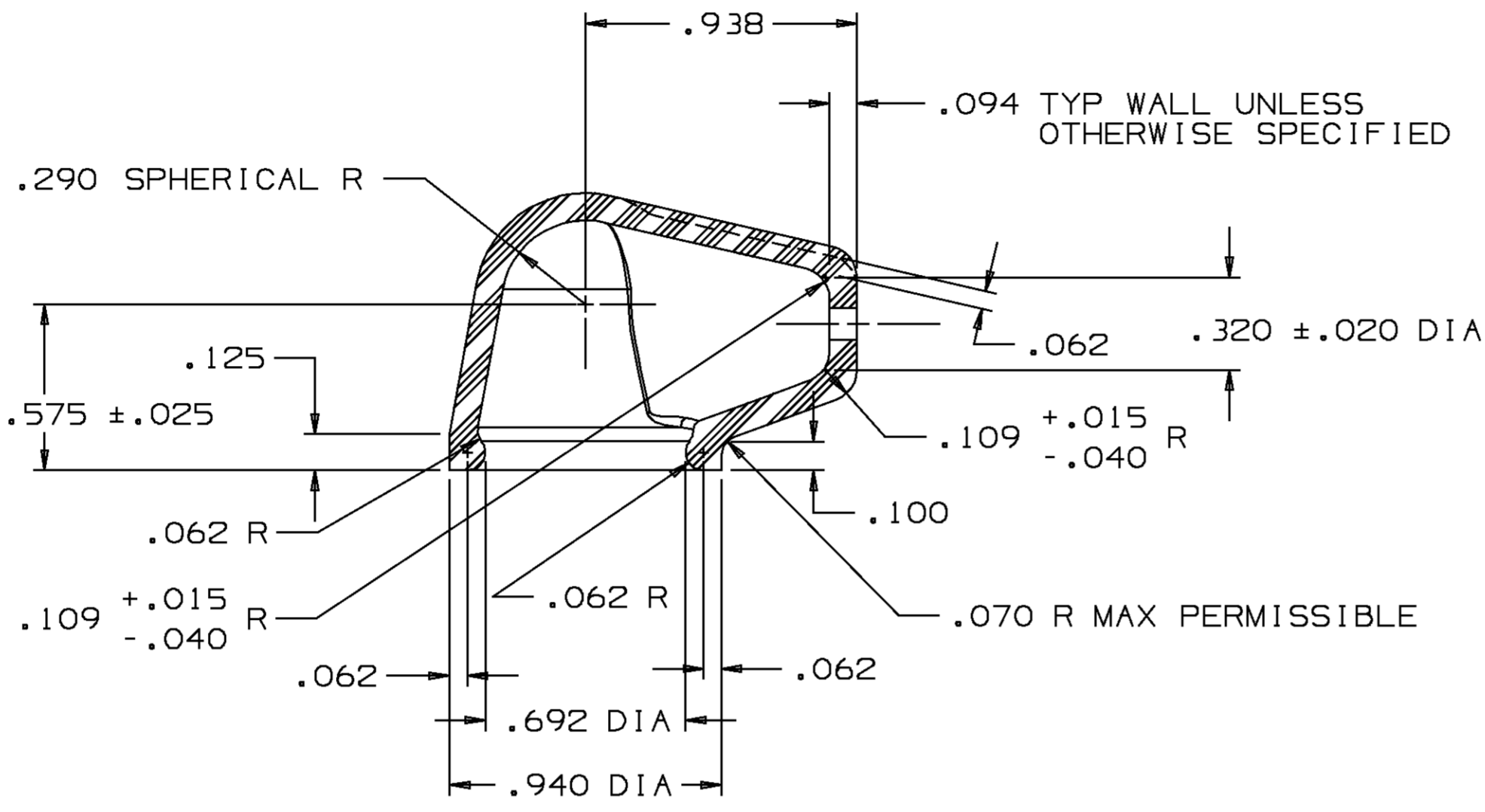
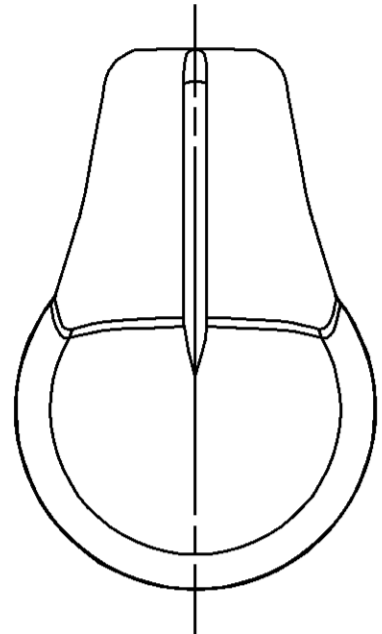
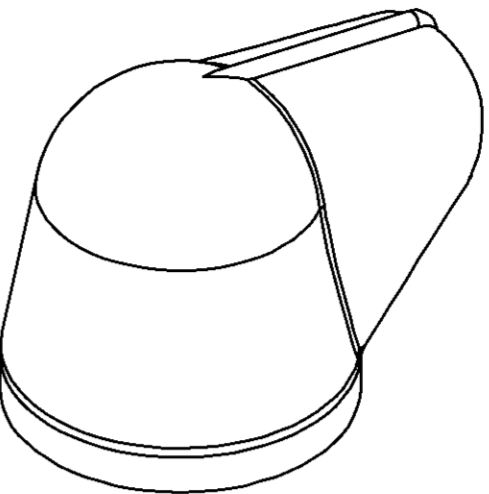


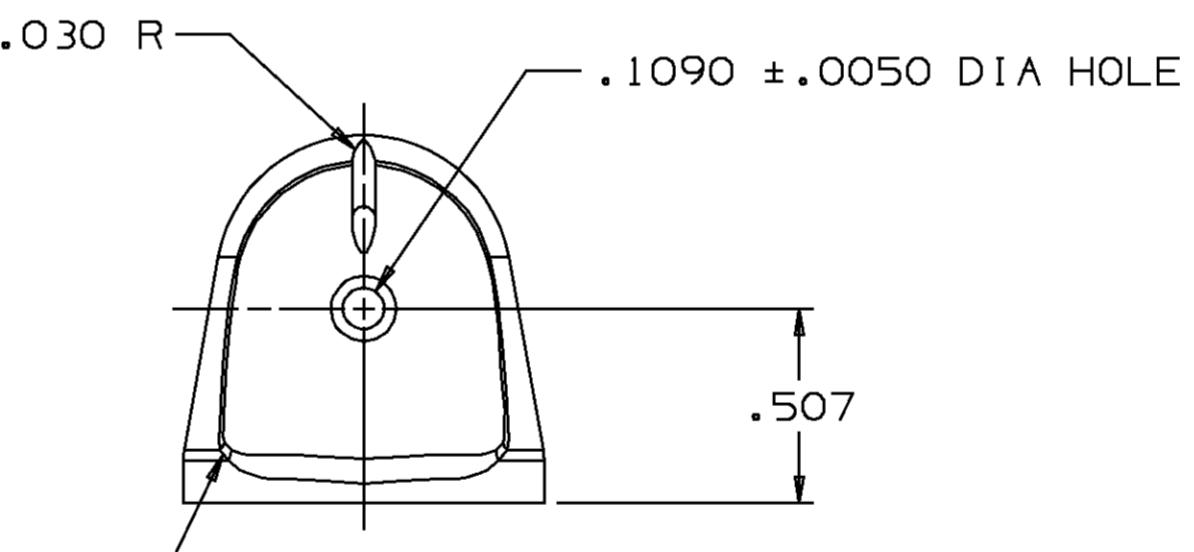
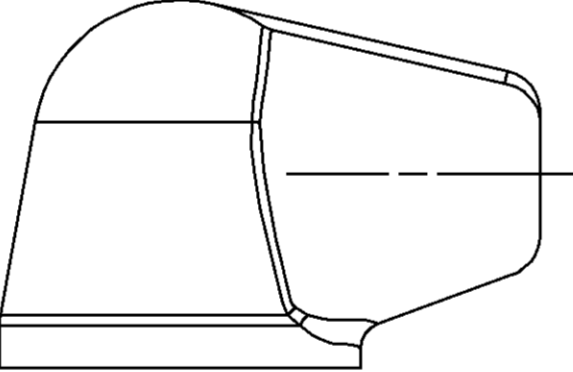
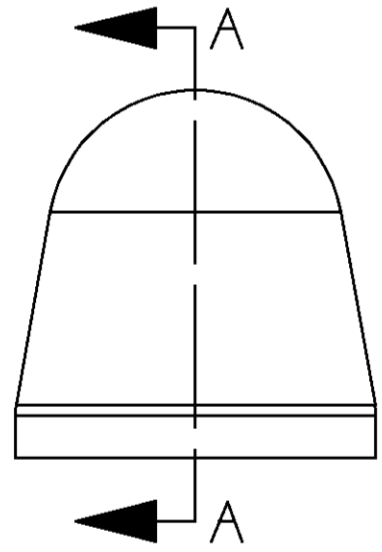
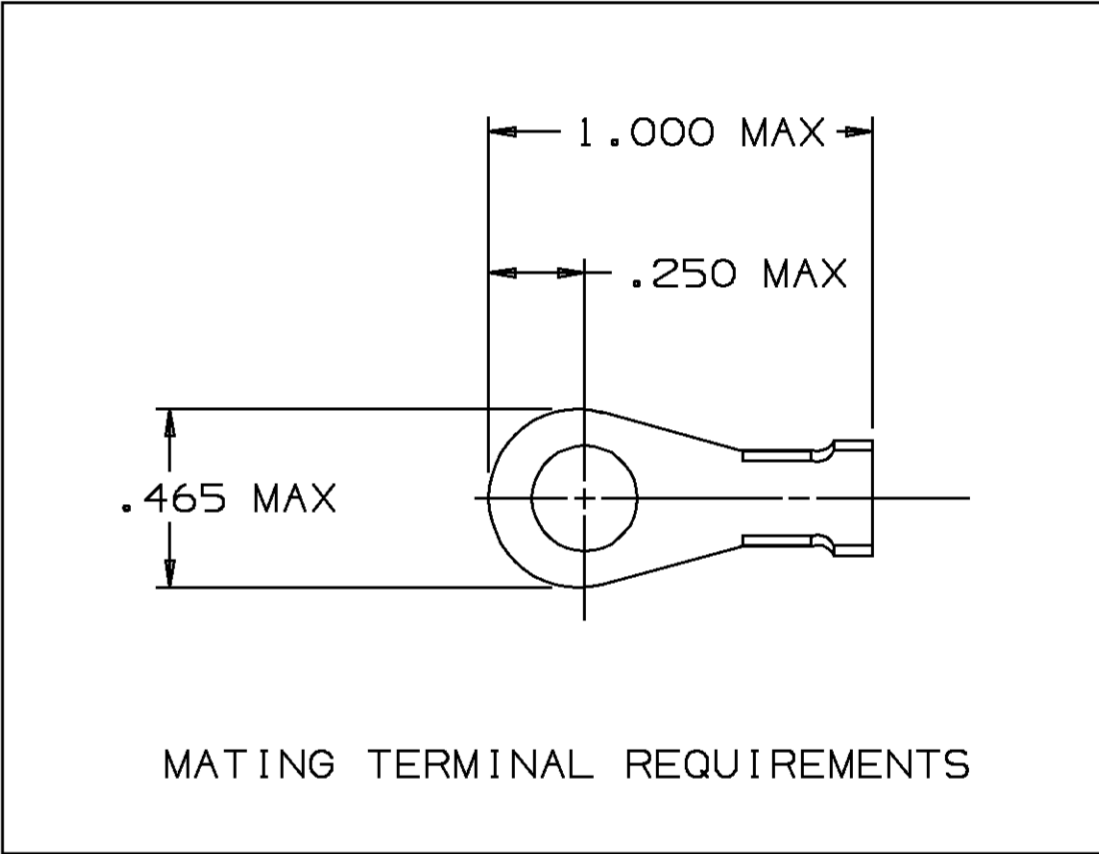
D

PART NO
0298 4033

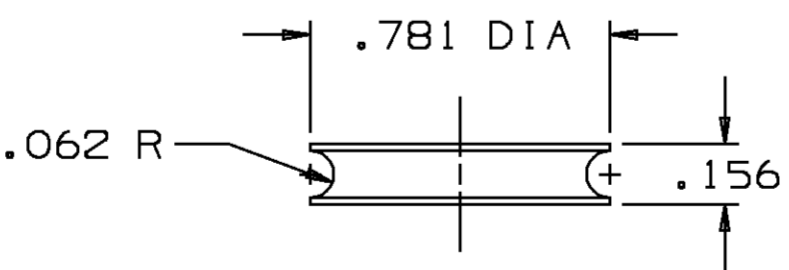
DATE	SYM	REVISION RECORD	AUTH	DR	CK
14MR94	M2	REDRAWN TO UG AND MATING			
		TERMINAL INFO ADDED	159294	PYP	BAS
16MY96	M3	REVISED MAETRIAL SPEC &			
		ADDED NOTE #2	172574	RPO	PO



SECTION A - A



BLEND TO .156 R REF -2 PLCS



BOOT TO SNAP OVER ABOVE WASHER

NOTES — 1. UNLESS OTHERWISE SPECIFIED AND/OR INDICATED: DIMENSIONS ARE TO FACE OF VIEW SHOWN AND AUTOMATICALLY ROUNDED BY COMPUTER FOR INSPECTION. (SEE MATH MODEL FOR PRECISE DIMENSION.) ALL RADII .030

M3 2. MATERIAL: ASTM D-2000 MIBC512, Z1, Z2, Z3
 Z1: TENSILE STRENGTH TO BE 124 MPa MIN
 Z2: ULTIMATE ELONGATION TO BE 550% MIN
 Z3: SHORE A DUROMETER (10 SECOND READING) TO BE 55±5

PART NO
0298 4033

		ENGLISH DIMENSIONS ARE IN INCHES UNLESS OTHERWISE SPECIFIED TOLERANCE UNLESS OTHERWISE SPECIFIED DECIMAL ANGULAR ± TWO PLACE ± THREE PLACE ± .015	
THIRD ANGLE PROJECTION			
CODE NO 6900 6901	QC -C-4009 -R-4015	DES	
DWG DATE 10AP62		DR J.R. LUBERT	
SCALE 2:1		CK P. GHIRARDI 04MY67	
REFERENCE NO		APPR J.R. LUBERT 04MY67	
MATERIAL SPEC		VOL CM ³ 4.437	
SEE NOTES			
NAME BOOT RING TERMINAL			
PART NUMBER 0298 4033			SIZE A1

M3

PACKARD ELECTRIC DIVISION
GENERAL MOTORS CORPORATION
WARREN, OHIO