

RPMC5014-63

MIL/COTS 3-Phase Delta EMI Power Line Filter

MILITARY EMI FILTERS



63 A

Specifications

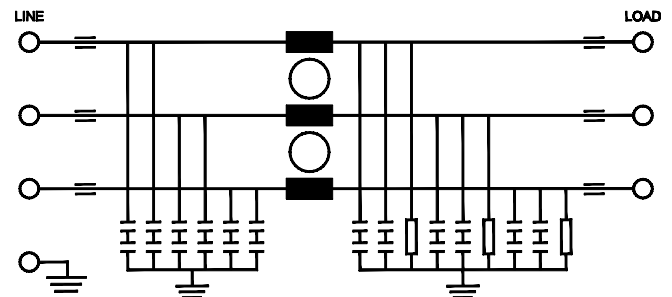
| | |
|------------------------|--------------|
| Operating Frequency | 50/60 Hz |
| Max. Operating Voltage | 480 VAC |
| Operating Current | 63 A |
| Ambient Temperature | -25 to 50°C |
| Hipot Rating (L-G) | 2200 VDC |
| Terminals (-T) | 3/8-16 Studs |
| Typ. Weight, lbs (kg) | 16.0 (7.3) |

Typical Insertion Loss, dB (50/50 Ohm)

| Freq (MHz) | 0.15 | 0.5 | 1.0 | 10 | 30 | 100 | 300 |
|------------|------|-----|-----|-----|-----|-----|-----|
| CM(dB) | 80 | 80 | 95 | 100 | 100 | 100 | 100 |

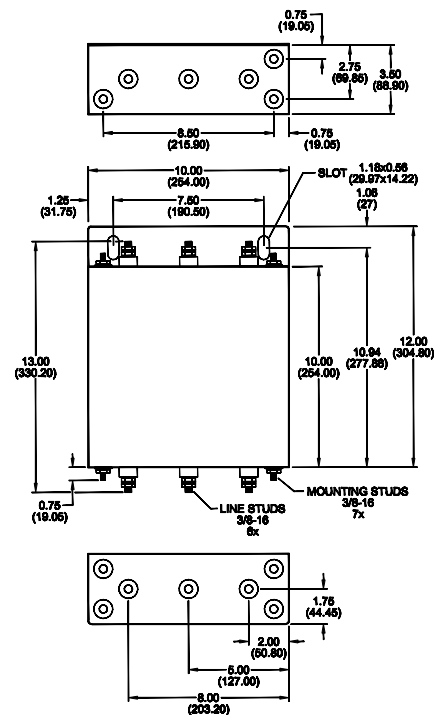


Electrical Schematic



Mechanical Dimensions

TYPICAL TOLERANCE: $\pm 0.02"$ (0.50 mm)



Specifications are subject to change. Consult factory to verify specifications.

For more information on our filter products call us at: (800) 527-4362 or (714) 289-0055
LCR, Radius Power, and Filter Concepts are now part of Astrodyne TDI

Astrodyne TDI
Now you have power.
www.AstrodyneTDI.com