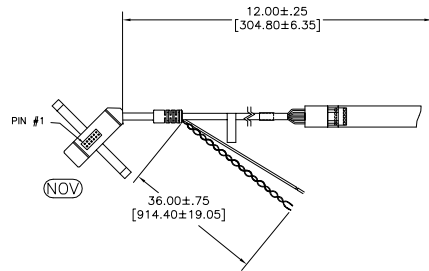


OGA DIAGONAL: 18.67 [474.26]
 VA DIAGONAL: 17.95 [455.92]
 PA DIAGONAL: 16.93 [429.90]

TOP LEVEL NUMBER	US NUMBER	TYPE	DIM "A" (TOTAL GLASS TO CONNECTOR)	A/G FINISH	PROD SPEC
17-8561-203	98-0003-2625-0	FFC	4.27" [108.46]	AG500	23655
17-8561-221	98-0003-2628-4	SER	4.27" [108.46]	AG500	23655
17-8561-206	98-0003-2626-8	NOV	SEE DWG	AG500	23655
17-8561-205	98-0003-3263-9	FFC	8.00" [203.20]	AG500	23655
17-8561-226	98-0003-3298-5	USB R	8.00" [203.20]	AG500	23655
17-8561-227	98-0003-3264-7	SER	8.00" [203.20]	AG500	23655



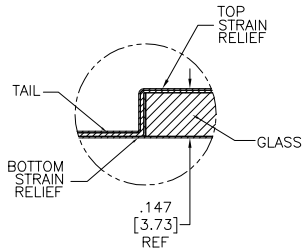
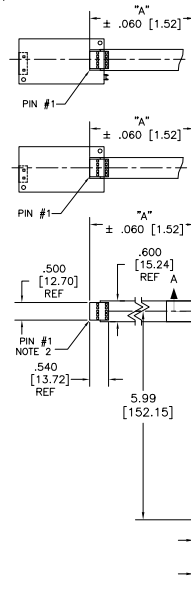
(SER)
 EXII-7720SC
 98-0003-2217-6
 SERIAL CONTROLLER
 SOLDER SIDE

(USB R)
 EXII-7760UC
 98-0003-2814-0
 USB CONTROLLER
 SOLDER SIDE

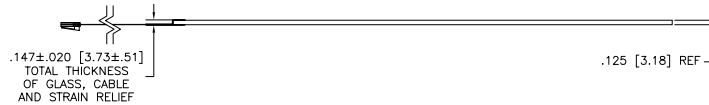


ESD CLAMSHELL CASE IS USED WITH ALL NOV, USB AND SER TERMINATIONS.

(FFC)



SECTION A-A
 SCALE: NONE



NOTES:

1. WEIGHT OF GLASS IN GRAMS: 843±10%
2. NICOMATIC HOUSING P/N: OLO5
 NICOMATIC RECEPTACLES (PINS) MATTE TIN PLATED P/N: 14106-12
 HOUSING ORIENTED WITH LATCH DOWN

PINOUT	
1	LR
2	LL
3	SHLD
4	UL
5	UR

UNITS	INCHES [MM]
TOLERANCES UNLESS OTHERWISE SPECIFIED	
.X	± .03 [.76]
.XX	± .03 [.76]
.XXX	± .015 [.38]
ANGLES ±1°	
THIRD ANGLE PROJECTION	
DO NOT SCALE DRAWING	
SCALE 1 = 1	

3M 3M TOUCH SYSTEMS
 METHUEN, MA
 USA

© COPYRIGHT 2004
 THIS DOCUMENT IS COPYRIGHTED PROPERTY OF THE 3M COMPANY AND MAY NOT BE REPRODUCED WITHOUT 3M WRITTEN PERMISSION OR USED OR DISCLOSED FOR OTHER THAN 3M AUTHORIZED PURPOSES.

DRAWN K.CROWLEY 9/05

H	REVISED PER CO 036256	4/13	SB
G	REVISED PER CO 033533	2/12	SB
F	REVISED PER CO 033636	10/11	SB
REV	CHANGE NOTICE	DATE	DRW

TITLE
MARKETING DRAWING
SCT32NN 17.95"

CAD FORMAT AUTOCAD SHEET 1 OF 1

SIZE C DOCUMENT NO. 28390-MKT REV H